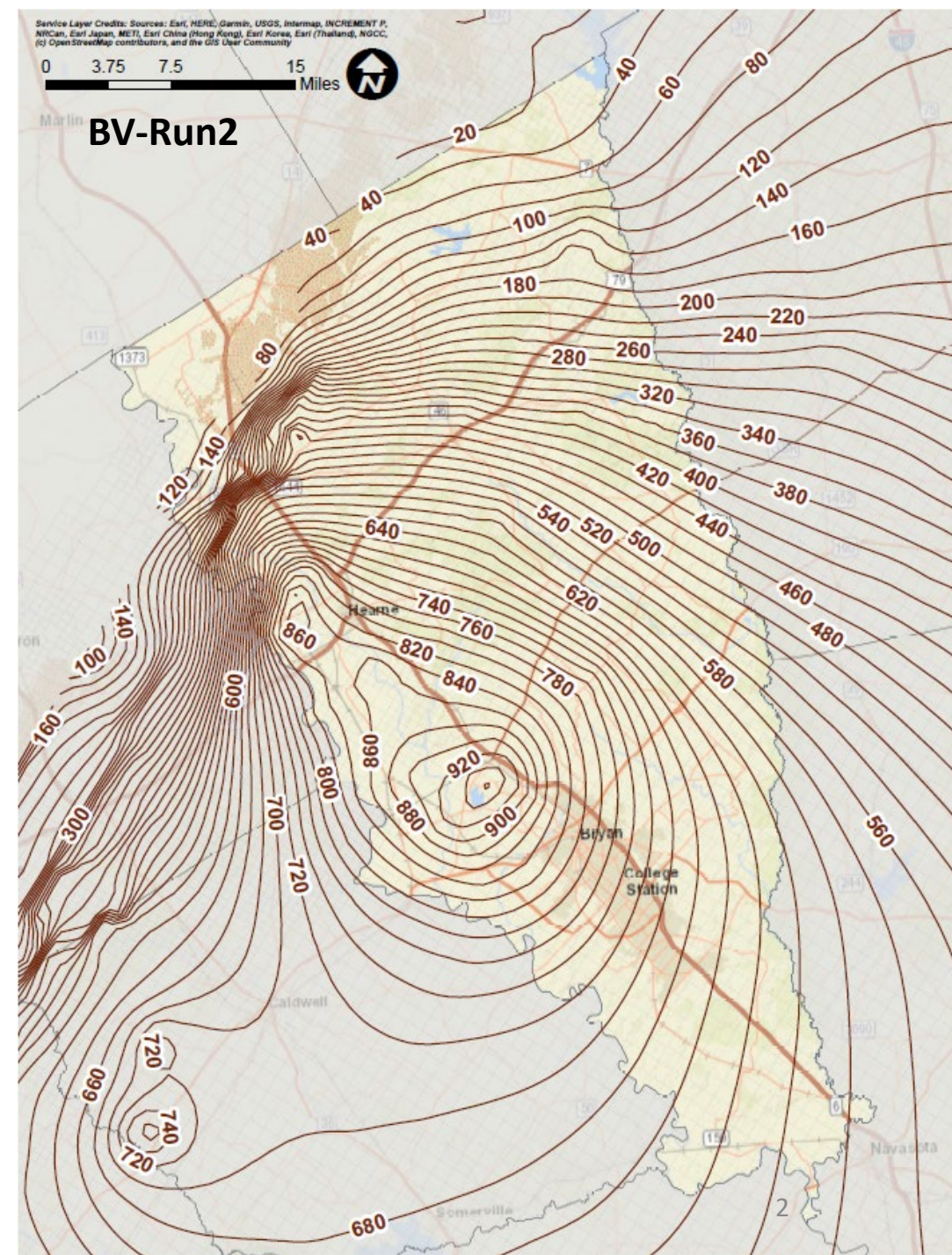
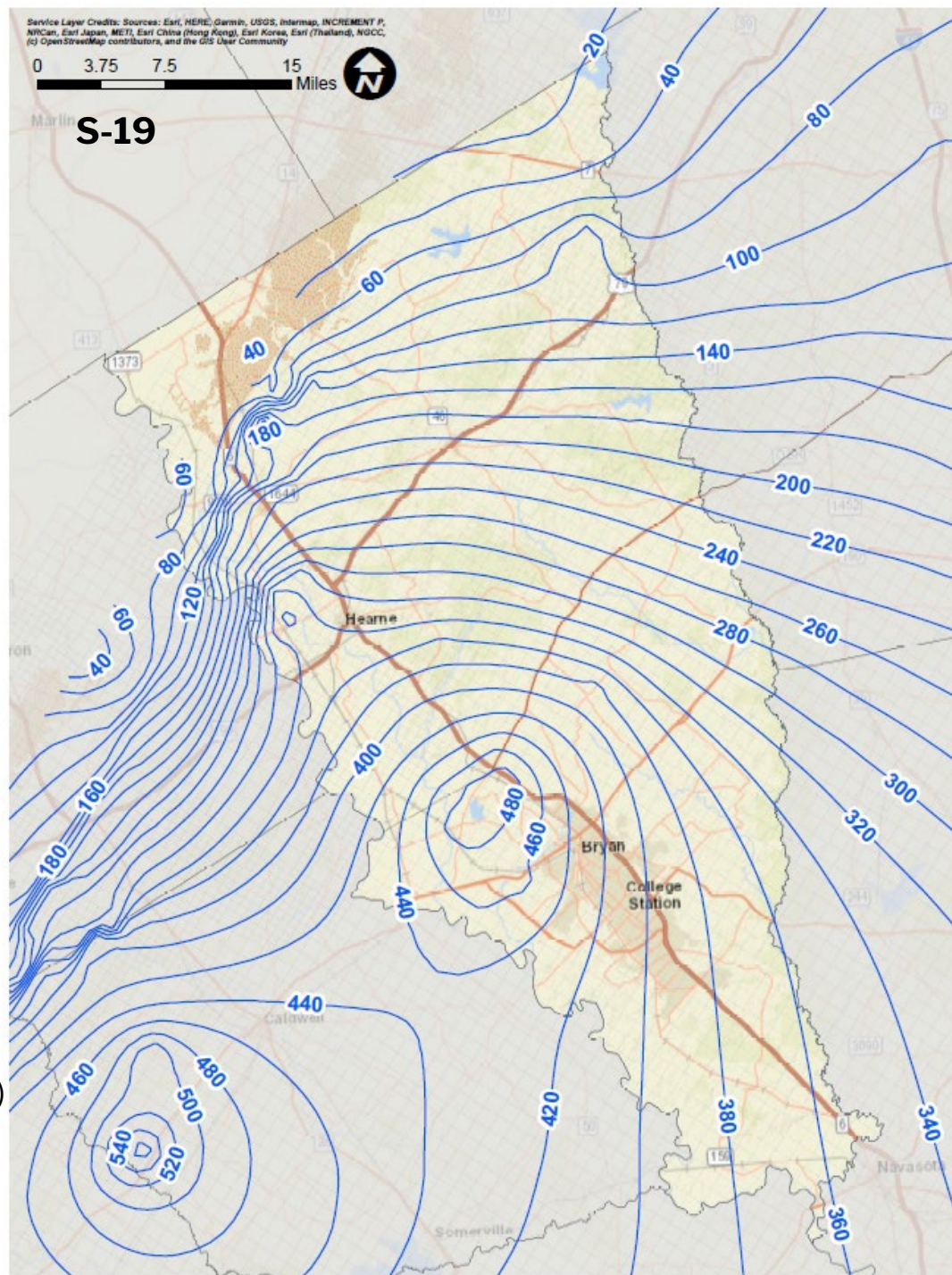


<b>As of 5-16-24</b>	<b>Hooper</b>	<b>Simsboro</b>	<b>Calvert Bluff</b>	<b>Carrizo</b>	<b>Queen City</b>	<b>Sparta</b>	<b>Yegua-Jackson</b>	<b>BRAA</b>
<b>2011 MAG</b>	316.00	96,185.00	1,755.00	5,496.00	529.00	7,923.00	7,071.00	N/A
<b>2016 MAG</b>	2,000.00	96,198.00	1,757.00	5,494.00	1,200.00	9,019.00	6,854.00	137,351.00
<b>2021 MAG</b>	<b>2,139.00</b>	<b>147,245.00</b>	<b>1,725.00</b>	<b>5,499.00</b>	<b>1,269.00</b>	<b>13,402.00</b>	<b>7,091.00</b>	<b>130,657.00</b>
<b>Acre Feet Permitted (All)</b>	1,910.01	345,035.51	1,678.53	11,152.88	1,703.30	13,835.85	3,998.02	96,511.23
<b>Acre Feet Used 2023</b>	1,077.52	54,630.15	340.13	1,079.16	133.83	3,955.31	1,104.59	N/A
<b>Acre Feet Used 2022</b>	1,044.94	58,313.28	250.82	1,575.09	92.83	4,288.33	1,260.70	N/A
<b>Acre Feet Used 2021</b>	918.22	51,127.64	133.46	955.61	45.30	3,161.20	948.24	N/A
<b>Acre Feet Used 2020</b>	745.86	53,163.83	230.45	1,061.68	102.62	3,389.46	1,253.18	N/A
<b>Acre Feet Used 2019</b>	699.98	50,528.07	176.89	992.40	400.88	3,869.64	1,278.11	N/A
<b>Acre Feet Used 2018</b>	809.07	55,228.86	130.27	825.25	146.54	4,499.56	1,183.12	N/A
<b>Acre Feet Used 2017</b>	756.18	53,325.82	271.98	630.11	237.46	4,241.37	1,509.54	N/A
<b>Acre Feet Used 2016</b>	909.16	54,237.29	132.32	761.72	99.62	4,152.91	1,565.41	N/A
<b>Acre Feet Used 2015</b>	1,084.25	56,638.46	160.00	665.50	189.78	4,122.06	1,664.27	N/A
<b>Acre Feet Used 2014</b>	1,065.07	62,946.34	183.50	852.28	496.57	5,358.33	2,533.23	N/A
<b>Acre Feet Used 2013</b>	794.24	64,106.92	81.77	806.43	64.40	3,402.06	1,438.37	N/A
<b>Acre Feet Used 2012</b>	955.67	53,327.02	72.35	848.67	69.00	3,176.87	1,418.78	N/A
<b>Acre Feet Used 2011</b>	621.47	69,377.78	152.91	1,562.36	581.76	4,336.69	1,658.95	N/A
<b>Acre Feet Used 2010</b>	914.01	63,984.53	58.36	745.62	0.45	3,279.09	1,396.34	N/A
<b>Acre Feet Used 2009</b>	611.06	68,586.31	13.14	730.41	31.56	3,432.25	1,599.18	N/A
<b>Permitted Wells by Aquifer (1081)</b>	<b>13</b>	<b>209</b>	<b>38</b>	<b>21</b>	<b>19</b>	<b>66</b>	<b>37</b>	<b>678</b>
<b>Permits by Aquifer (1100)</b>	<b>18</b>	<b>217</b>	<b>38</b>	<b>21</b>	<b>22</b>	<b>69</b>	<b>37</b>	<b>678</b>
<b>Robertson Permitted Wells (704)</b>	<b>13</b>	<b>170</b>	<b>38</b>	<b>18</b>	<b>7</b>	<b>8</b>	<b>0</b>	<b>450</b>
<b>Robertson Permits (718)</b>	<b>18</b>	<b>178</b>	<b>38</b>	<b>18</b>	<b>7</b>	<b>9</b>	<b>0</b>	<b>450</b>
<b>Brazos Permitted Wells (377)</b>	<b>0</b>	<b>39</b>	<b>0</b>	<b>3</b>	<b>12</b>	<b>58</b>	<b>37</b>	<b>228</b>
<b>Brazos Permits (382)</b>	<b>0</b>	<b>39</b>	<b>0</b>	<b>3</b>	<b>15</b>	<b>60</b>	<b>37</b>	<b>228</b>
<b>Secondary Permitted Amount</b>	<b>233 (5)</b>	<b>1,594.76 (8)</b>	<b>0</b>	<b>0</b>	<b>14 (3)</b>	<b>15 (3)</b>	<b>0</b>	<b>N/A</b>

# Simulated Simsboro Aquifer Drawdown 2000-2070 (BVGCD Overview)



Drawdown Contour (ft)  
Contour Interval = 20 feet

# Average Simulated BVGCD Drawdown Through Time

