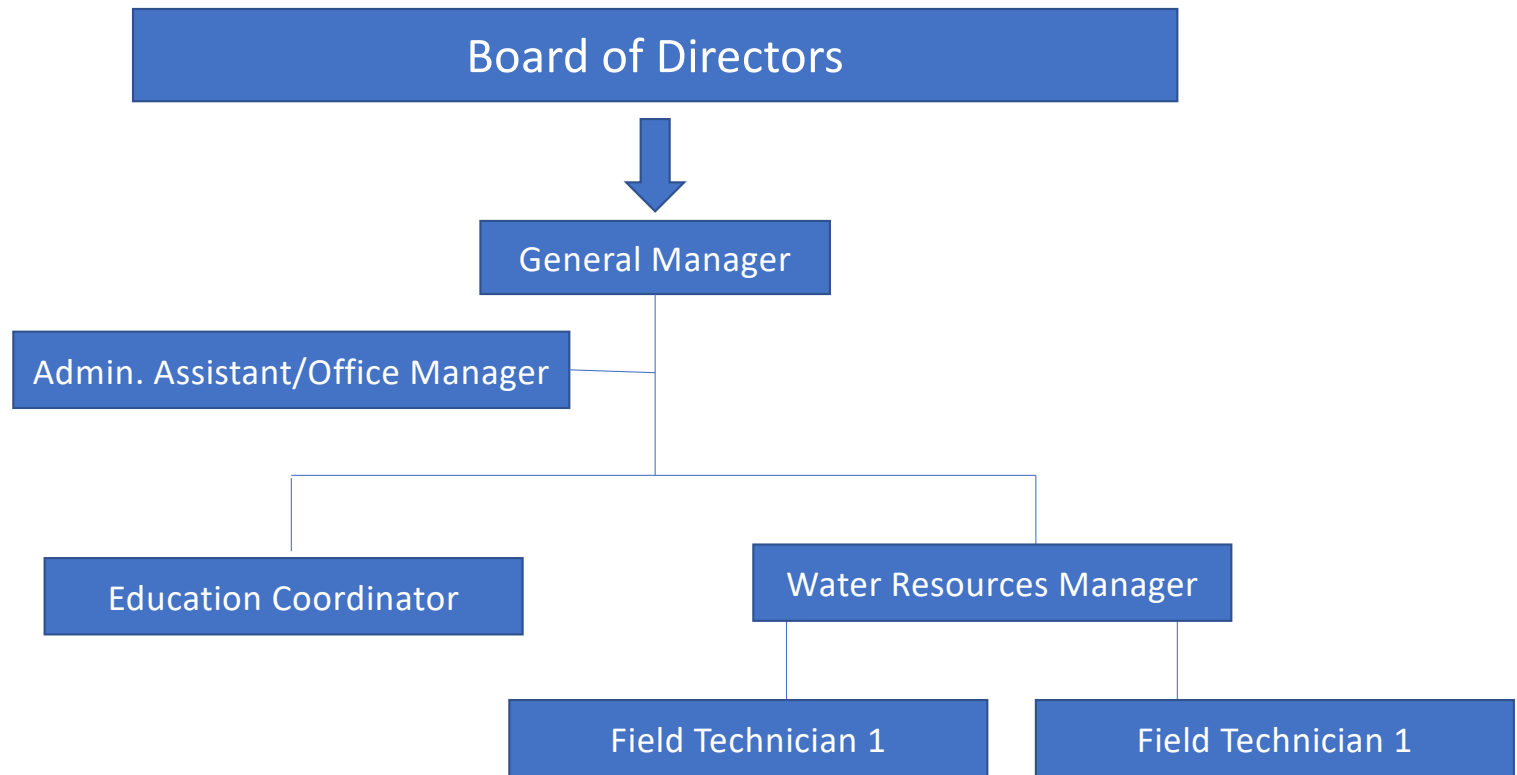
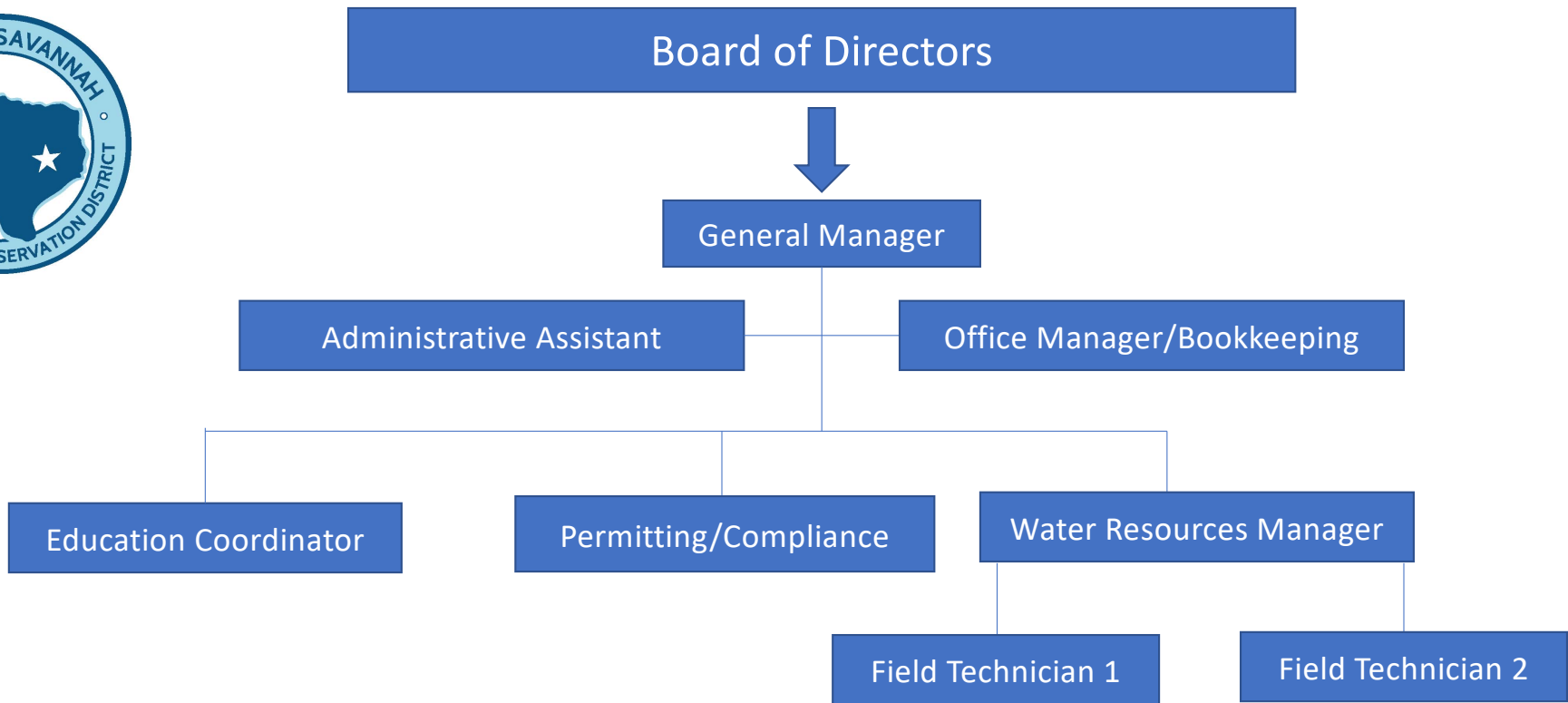


Post Oak Savannah Groundwater Conservation District (Organizational Chart 8-1-21)



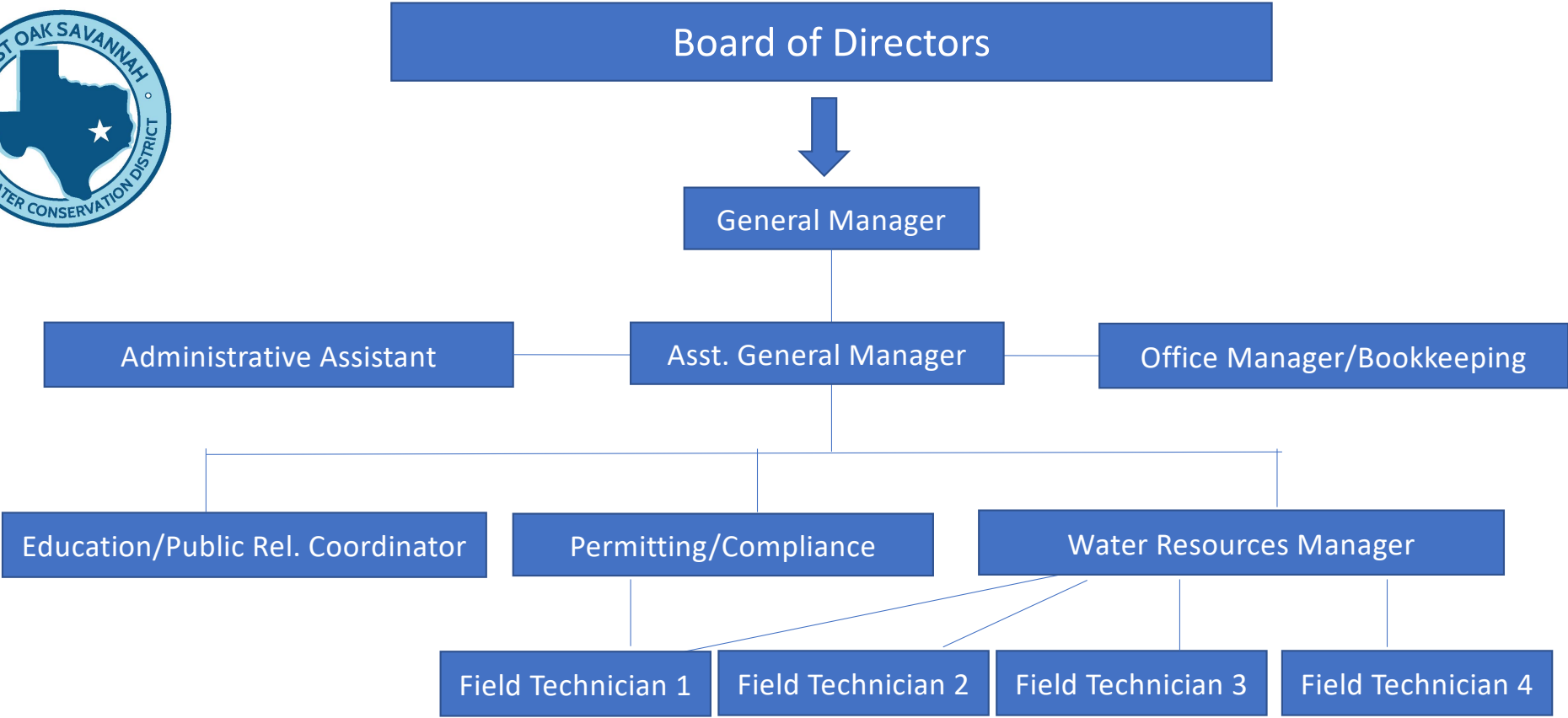
Serving the citizens of Milam and Burleson Counties

Post Oak Savannah Groundwater Conservation District (Organizational Chart 8-1-22 to current)



Serving the citizens of Milam and Burleson Counties

Post Oak Savannah Groundwater Conservation District (Projected Organizational Chart 2024-2025)



Serving the citizens of Milam and Burleson Counties