

# ELEVATION KEYED NOTES

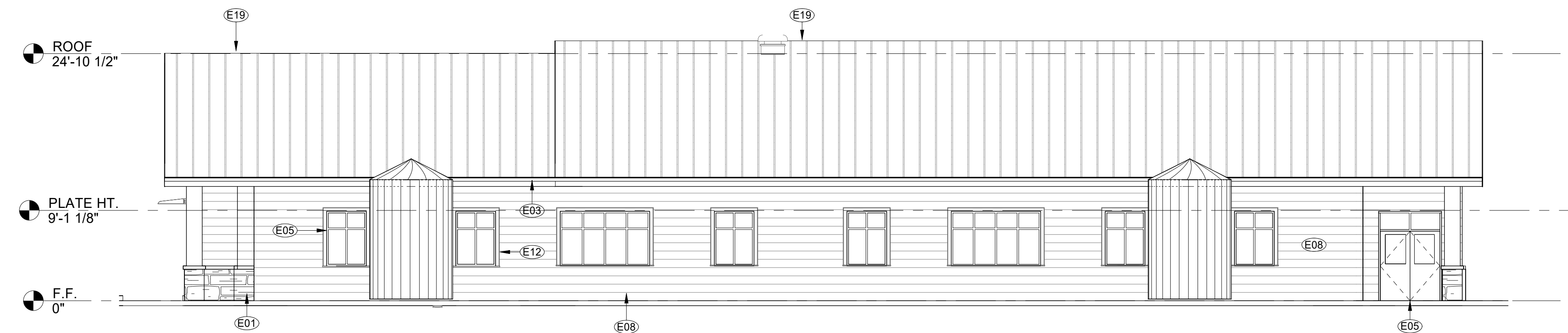
KEY VALUE	KEYNOTE TEXT	COLOR	MFG.
E01	NATURAL LIME STONE, RE: PROJ. MANUAL	Natural White Chopped Limestone	ACME Brick
E02	CAST STONE CAP	Award Blue	Berridge
E03	PREFINISHED METAL GUTTER	xxx	xxx
E05	SCHEDULED OPENING	Acrylic-Coated Galvalume	Berridge
E06	PREFINISHED STANDING SEAM MTL. ROOF, RE: PROJECT MANUAL.	xxx	xxx
E08	LIGHT HARDIBOARD, RE: PROJ. MANUAL.	xxx	xxx
E10	LOGO, RE: PROJ. MANUAL.	xxx	xxx
E11	WINDOW TRIM, RE: PROJECT MANUAL.	xxx	xxx
E12	OWNER PROVIDED WATER CISTERN, RE: PROJECT MANUAL.	xxx	xxx
E13	SHADING DEVICE, RE: PROJ. MANUAL.	xxx	xxx
E14	PREFINISHED METAL DOWNSPOUT.	xxx	xxx
E18	PREFINISHED METAL FASCIA, RE: PROJECT MANUAL	xxx	xxx
E19	PREFINISHED METAL RAKE, RE: PROJECT MANUAL	Award Blue	Berridge



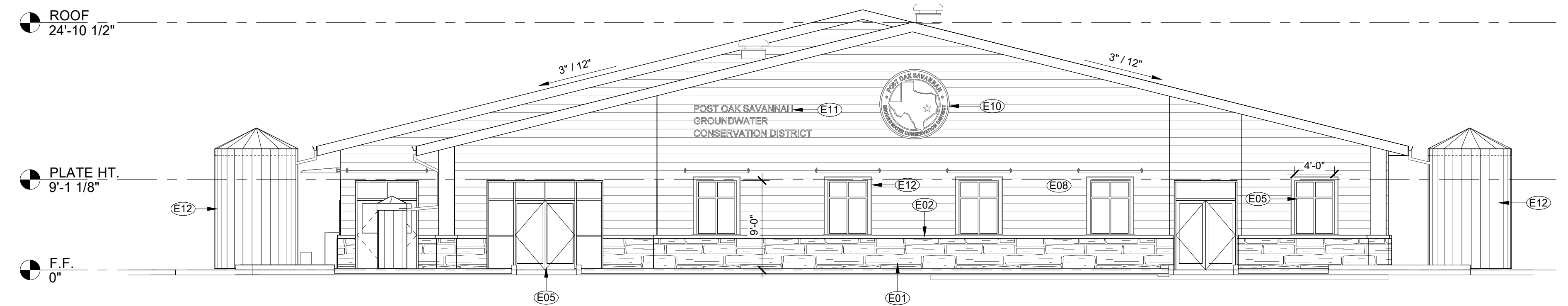
4 SOUTH ELEVATION  
1/8" = 1'-0"



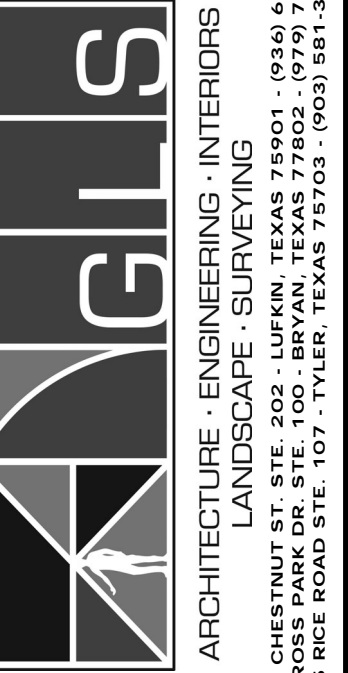
3 WEST ELEVATION  
1/8" = 1'-0"



2 NORTH ELEVATION  
1/8" = 1'-0"



1 EAST ELEVATION  
1/8" = 1'-0"



NOTE: THIS DOCUMENT IS RELEASED FOR THE PURPOSE OF INTERIM REVIEW ONLY. UNDER THE REVISED ARCHITECTURAL PROFESSIONAL ACT, CHAPTER 901, SUBCHAPTER A, TITLE 19, PART 1, ARTICLE 1001.001, IT IS NOT TO BE USED FOR BIDDING, CONTRACT ADMINISTRATION, PERMITS, OR ANY OTHER USE REQUIRING "FINAL SEALED" DOCUMENTS.

**NEW EDUCATION & MEETING CTR.**  
**POST OAK SAVANNAH GROUNDWATER CONSERVATION**  
 MILANO, TEXAS  
**Exterior Elevations**

CONTRACT NO.  
697010  
SHEET NO.

**A5.11**

NO.	DATE	REVISIONS

DRAWN BY: Author  
 APPROVED BY: Approver  
 ISSUED: Issued

T.B.P.E.L.S. FIRM NO. F-413  
 T.B.A.E. FIRM NO. BR-251  
 T.B.P.E.L.S. FIRM NO. 10110900  
 T.B.P.E.L.S. FIRM NO. 10110901

2023 ALL RIGHTS RESERVED BY GOODWIN-LASITER, INC. UNAUTHORIZED USE OR REPRODUCTION IS PROHIBITED WITHOUT WRITTEN CONSENT FROM GOODWIN-LASITER, INC.

1609 S. CHESTNUT ST. STE. 202, LUFKIN, TEXAS 75901, (936) 637-4900  
 4077 CROSS PARK DR. STE. 100, BRYAN, TEXAS 77802, (797) 776-9700  
 445 WEE ROAD, STE. 101, WALKER, TEXAS 75782, (409) 381-5800