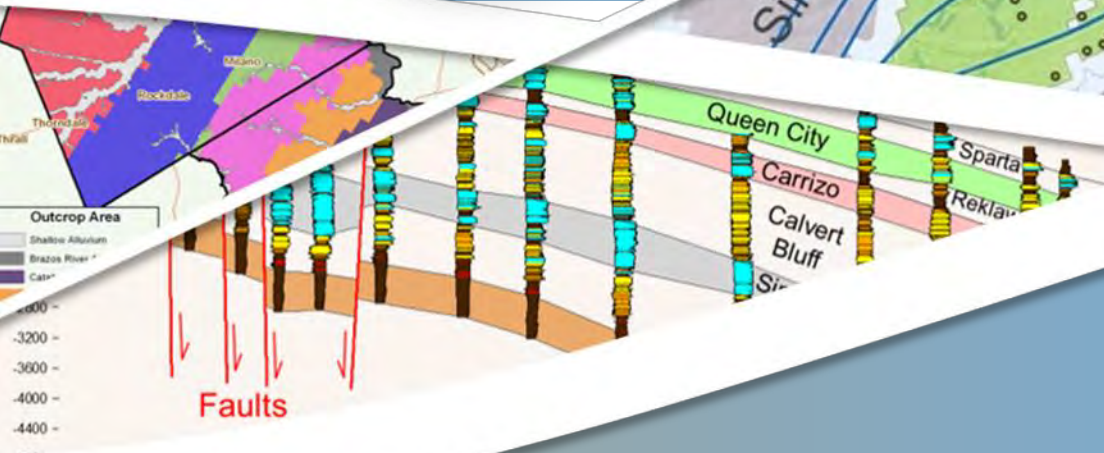


POSGCD Desired Future Conditions Committee: Transducer Data



Presented By:
Steve Young
Tingting Yan

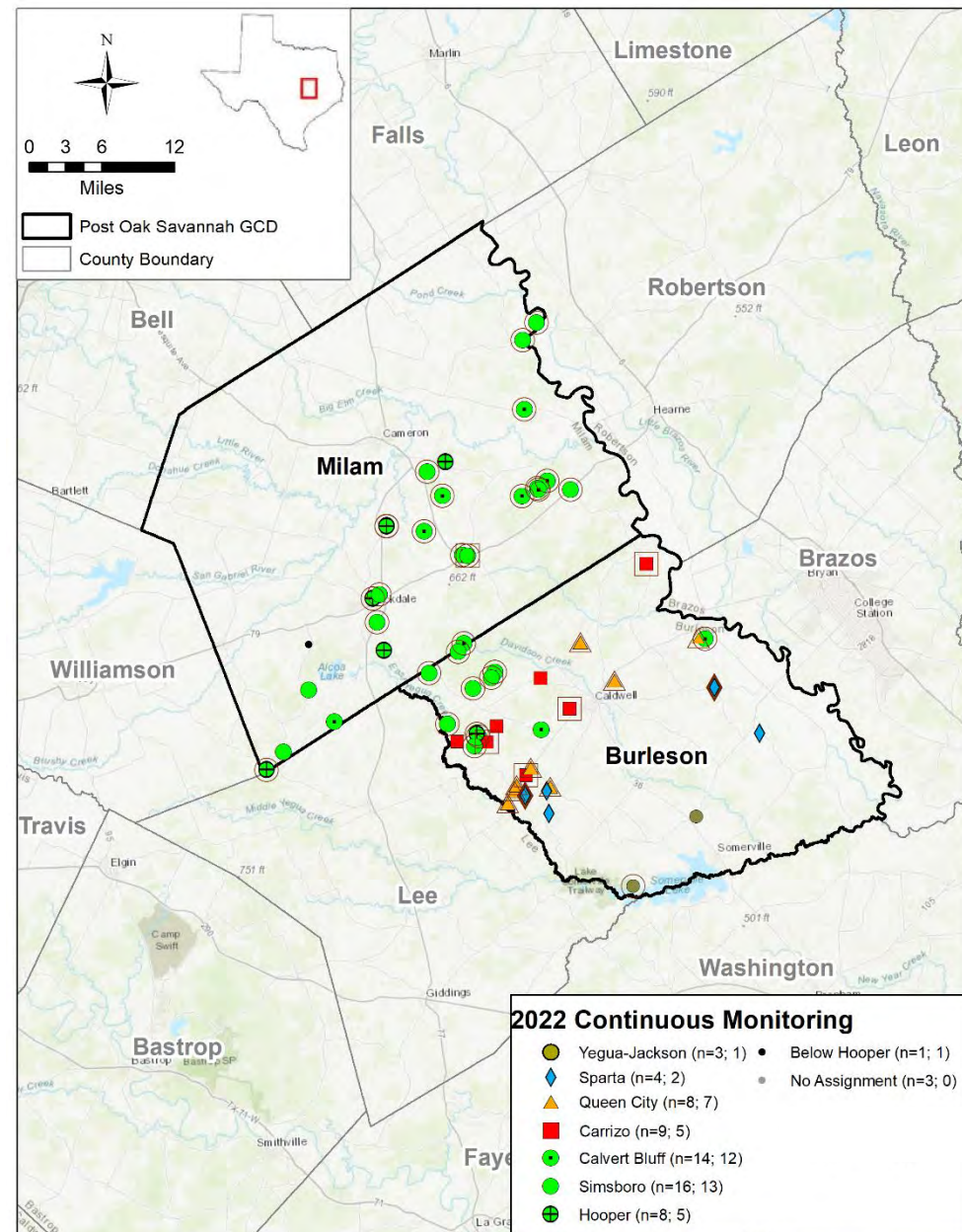


Oct 11, 2022

Location of Wells with Recording Equipment

- 65 wells with recording Equipment
- 45 wells with more than 1 year of data

[preliminary result,
subject to revise]

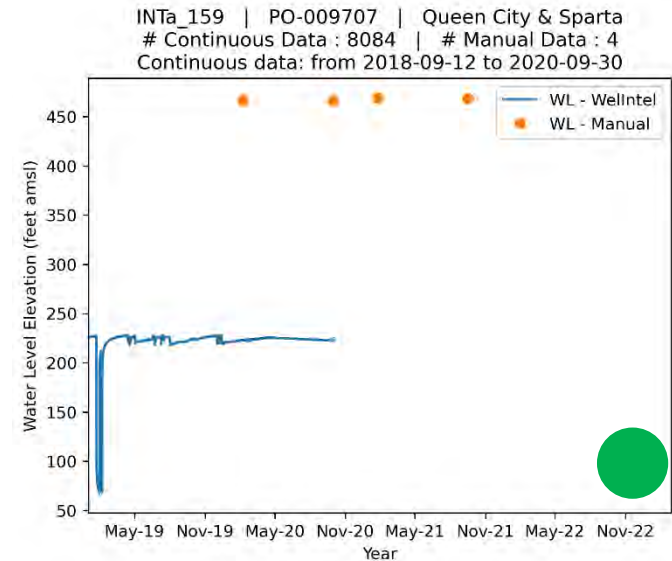
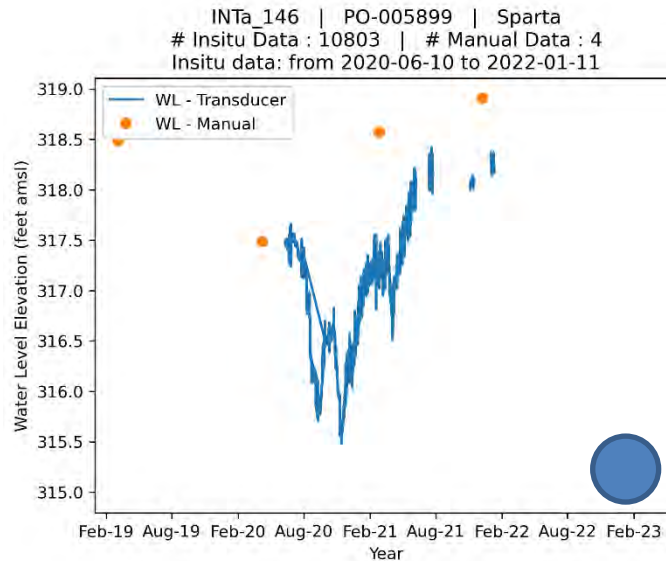


Sparta

Percent of
Screen in
Aquifer

 >70%

 <70%



[preliminary result,
subject to revise]

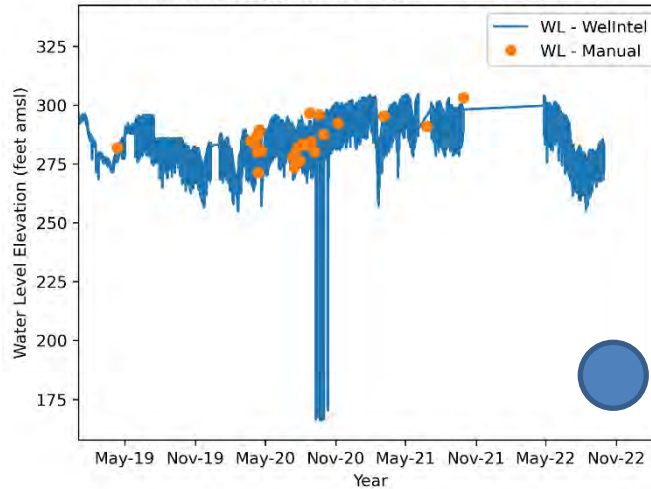
Queen City

Percent of
Screen in
Aquifer

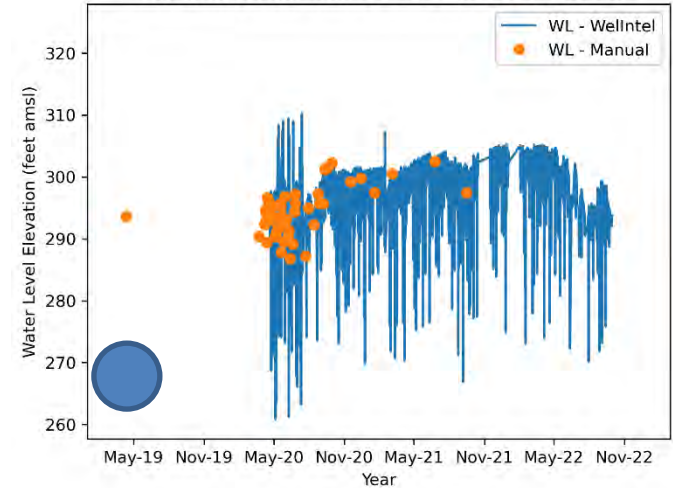


[preliminary result,
subject to revise]

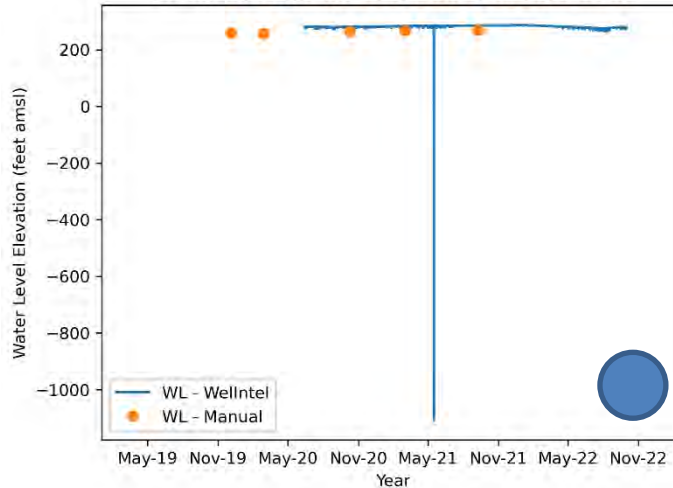
INTa_40 | PO-001061 | Queen City
Continuous Data : 19014 | # Manual Data : 28
Continuous data: from 2018-09-13 to 2022-09-30



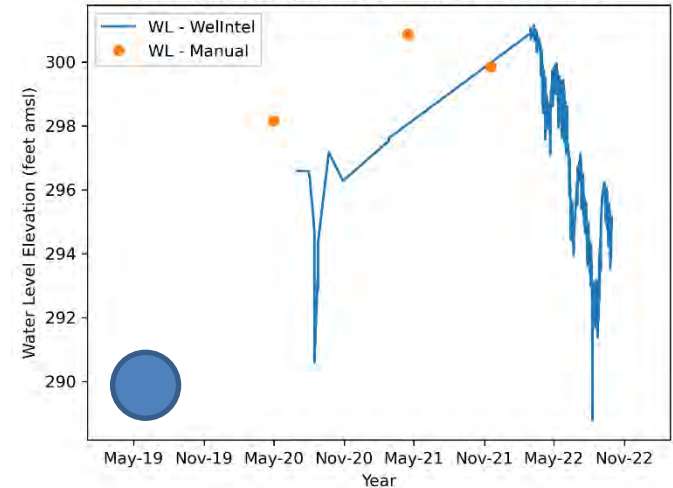
INTa_51 | PO-001573 | Queen City
Continuous Data : 2679 | # Manual Data : 52
Continuous data: from 2020-04-20 to 2022-09-30



INTa_239 | PO-006090 | Queen City
Continuous Data : 3575 | # Manual Data : 5
Continuous data: from 2020-06-12 to 2022-09-30



INTa_266 | PO-009387 | Queen City
Continuous Data : 494 | # Manual Data : 3
Continuous data: from 2020-06-29 to 2022-09-29



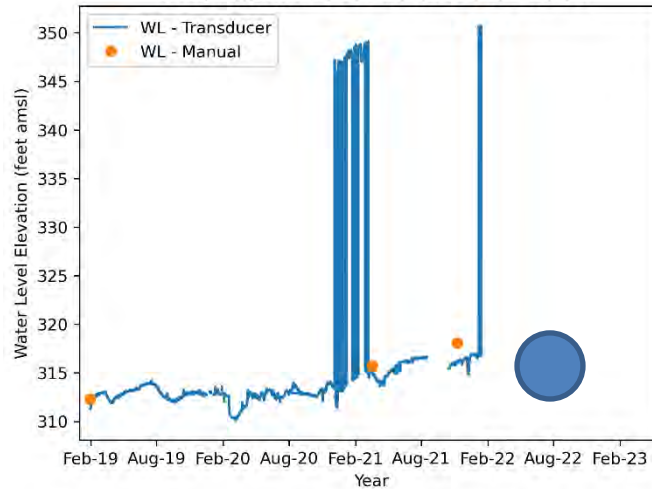
Queen City

Percent of
Screen in
Aquifer

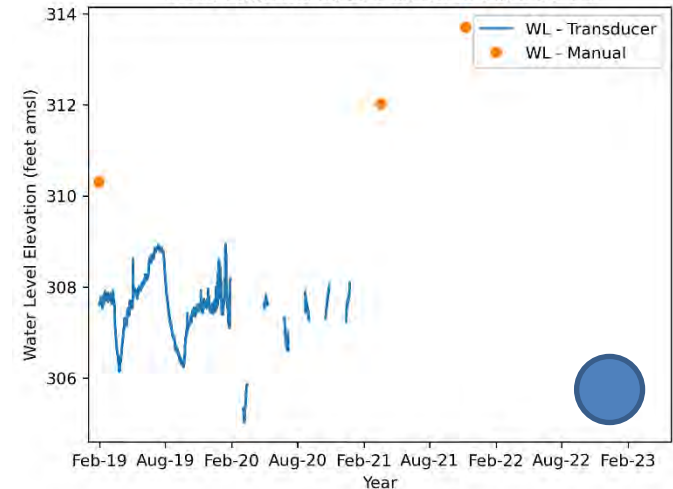


[preliminary result,
subject to revise]

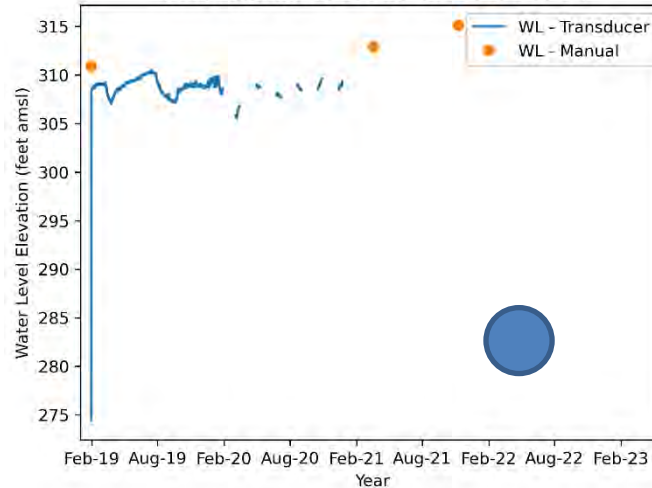
INTa_195 | PO-009709 | Queen City
Insitu Data : 23732 | # Manual Data : 3
Insitu data: from 2019-01-30 to 2022-01-15



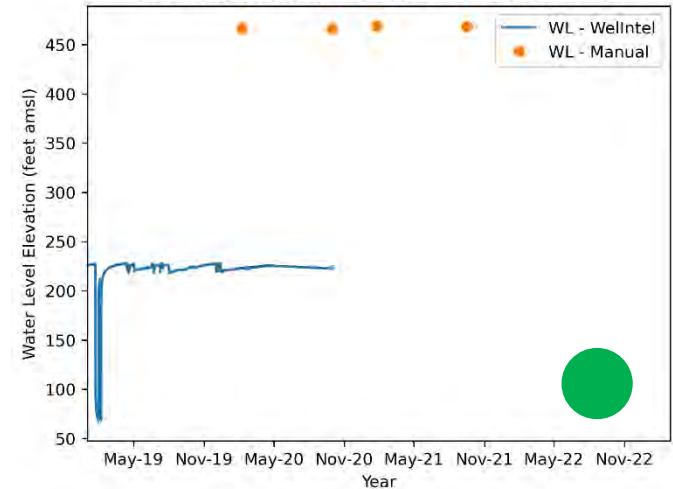
INTa_196 | PO-009710 | Queen City
Insitu Data : 10385 | # Manual Data : 3
Insitu data: from 2019-01-30 to 2020-12-24



INTa_197 | PO-009708 | Queen City
Insitu Data : 10295 | # Manual Data : 3
Insitu data: from 2019-01-30 to 2020-12-24



INTa_159 | PO-009707 | Queen City & Sparta
Continuous Data : 8084 | # Manual Data : 4
Continuous data: from 2018-09-12 to 2020-09-30

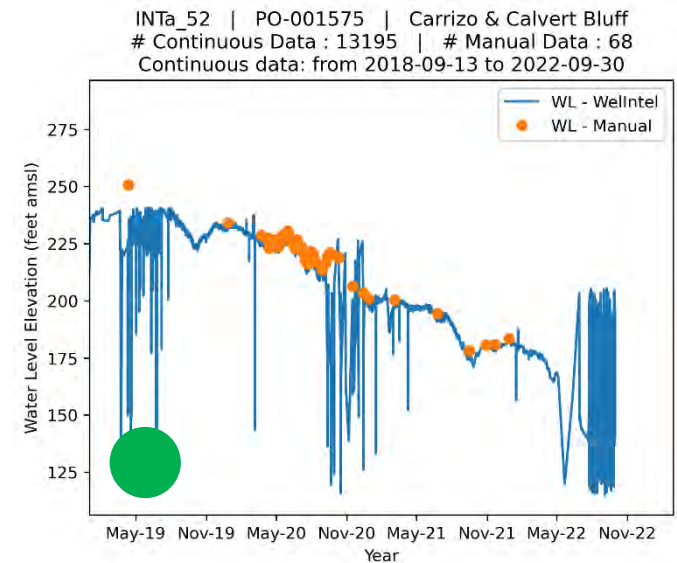
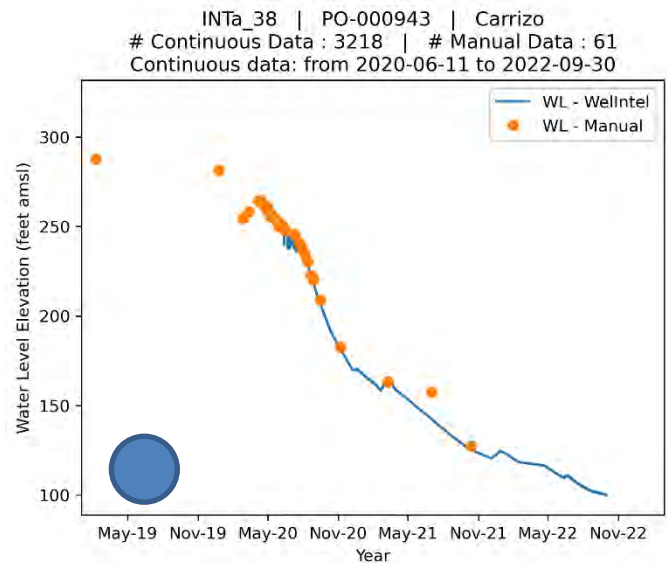
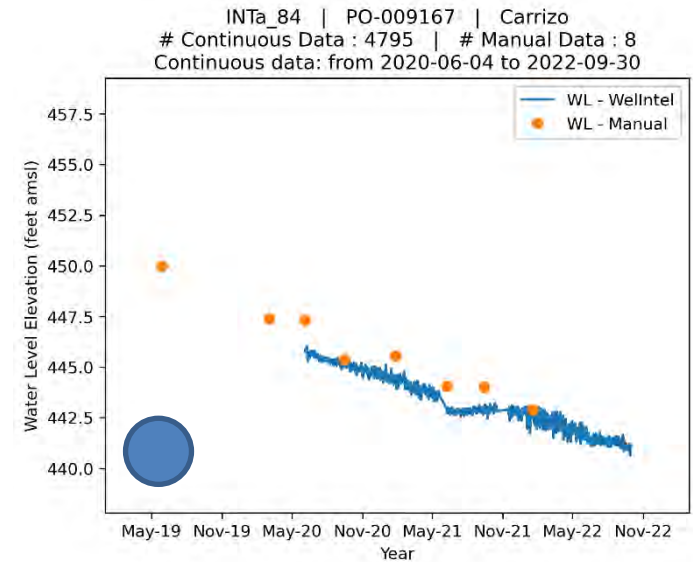
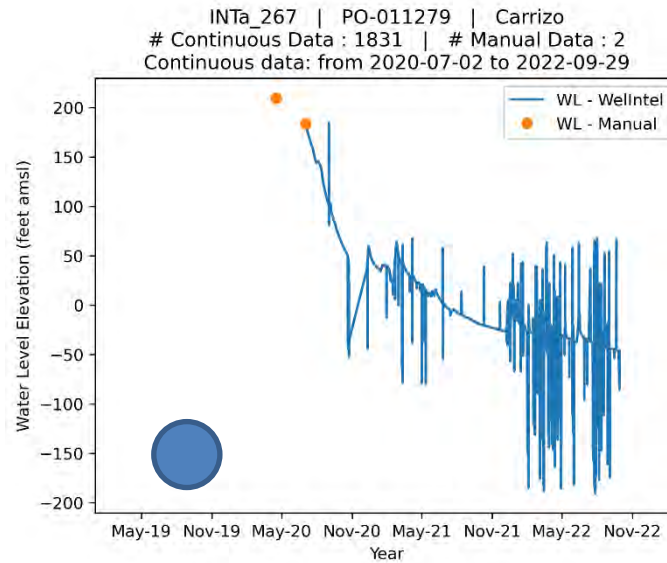


Carrizo

Percent of
Screen in
Aquifer



[preliminary result,
subject to revise]

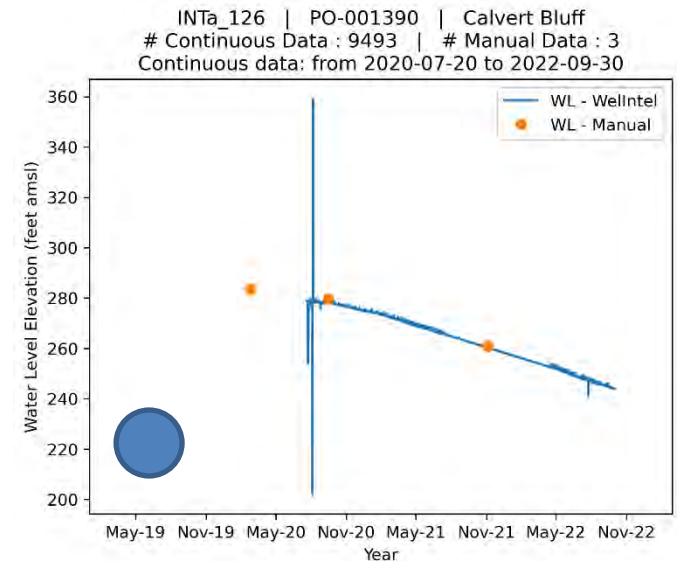
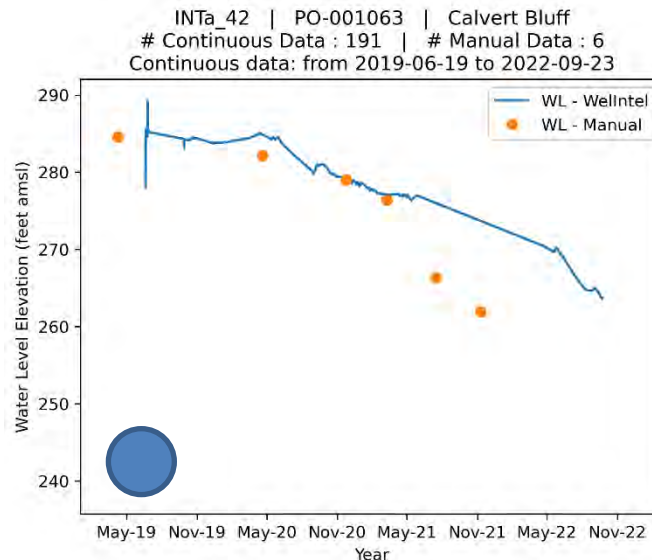
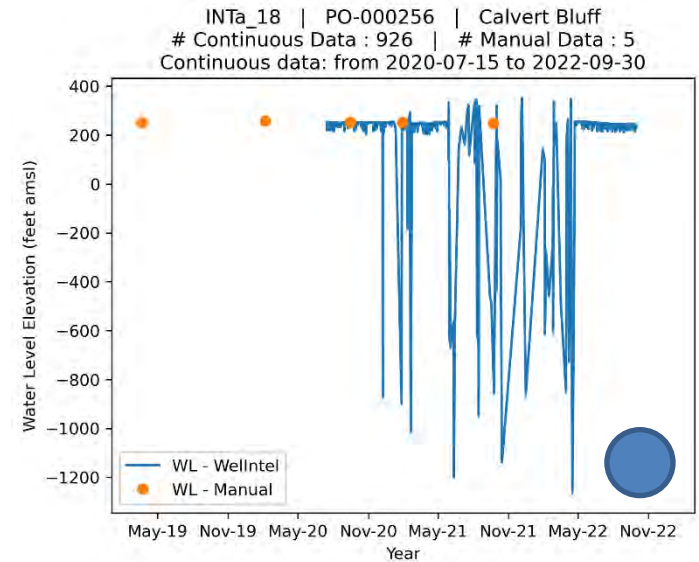
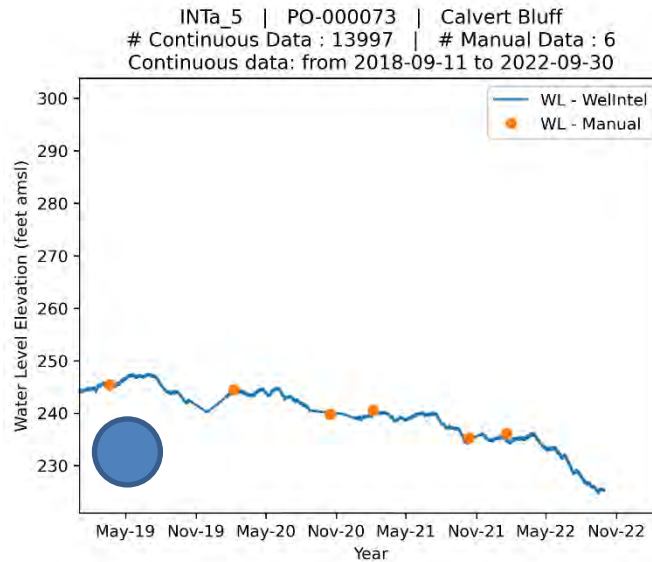


Calvert Bluff

Percent of
Screen in
Aquifer

 >70%

 <70%



Calvert Bluff

Percent of
Screen in
Aquifer

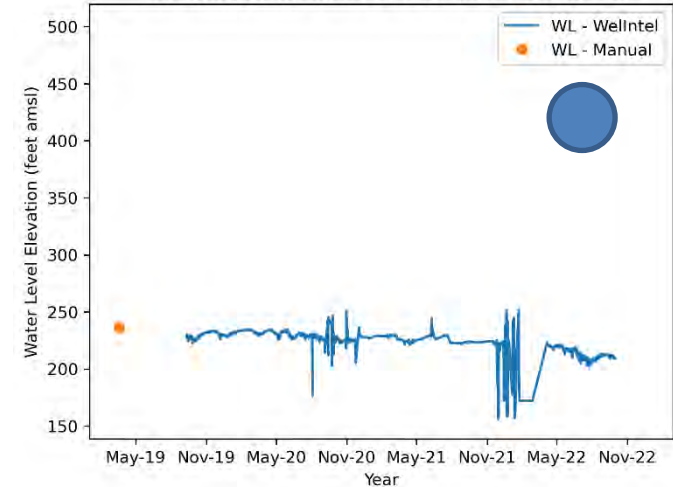


[preliminary result,
subject to revise]

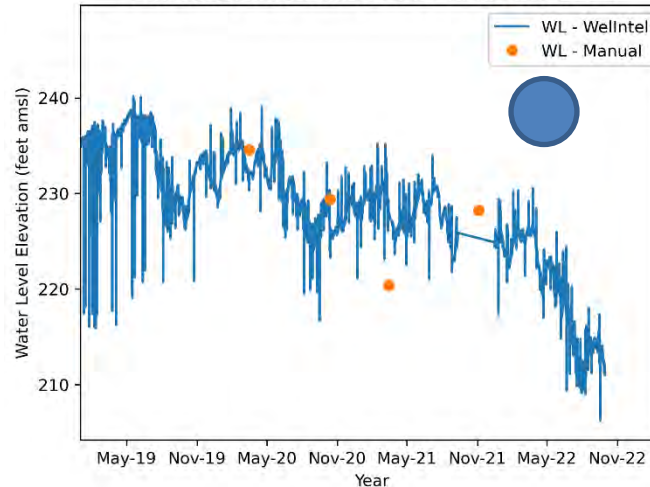
INTa_53 | PO-001789 | Calvert Bluff
Continuous Data : 3458 | # Manual Data : 5
Continuous data: from 2020-06-10 to 2022-09-30



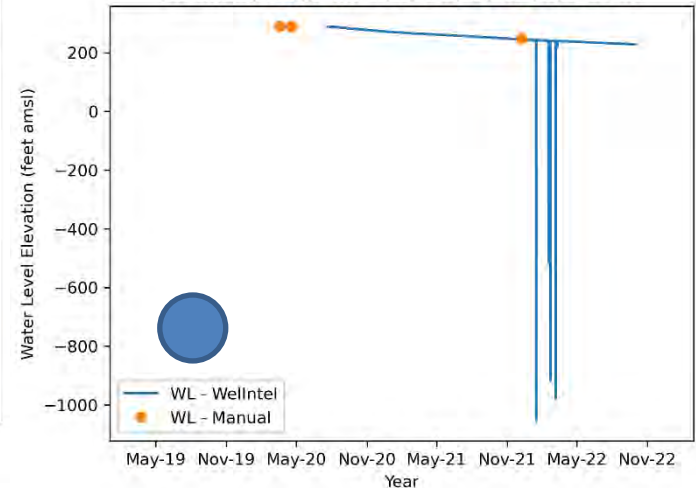
INTa_69 | PO-007998 | Calvert Bluff
Continuous Data : 2338 | # Manual Data : 1
Continuous data: from 2019-09-10 to 2022-09-30



INTa_142 | PO-008153 | Calvert Bluff
Continuous Data : 5394 | # Manual Data : 4
Continuous data: from 2018-09-14 to 2022-09-29



INTa_246 | PO-009189 | Calvert Bluff
Continuous Data : 1526 | # Manual Data : 3
Continuous data: from 2020-07-22 to 2022-09-30

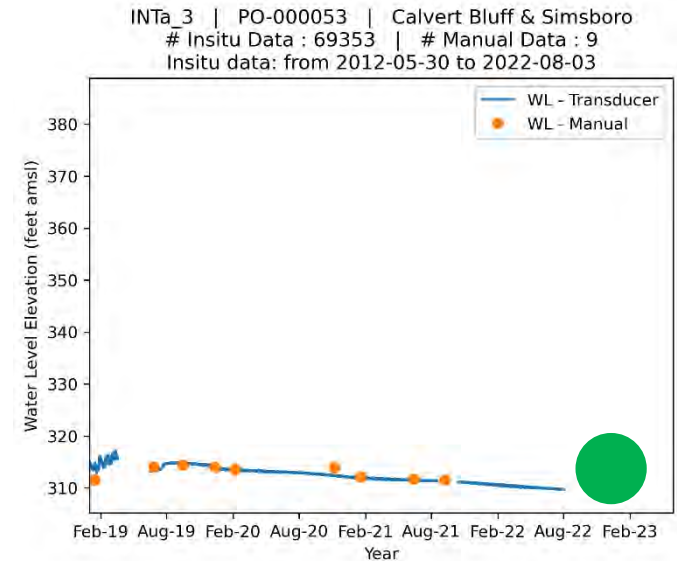
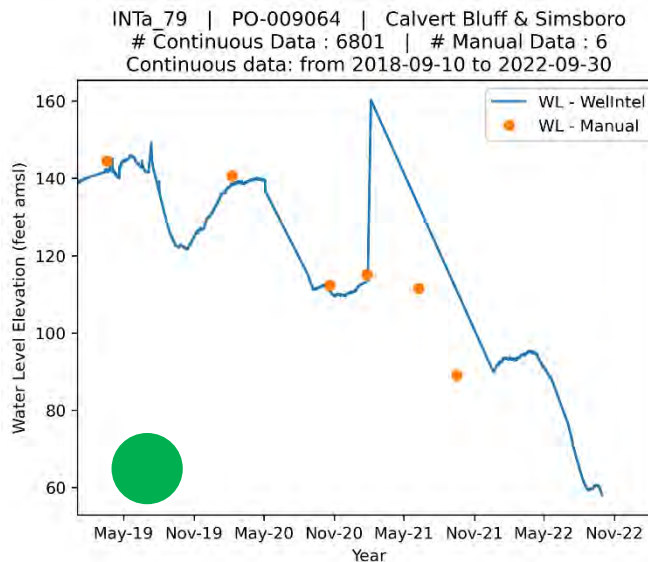
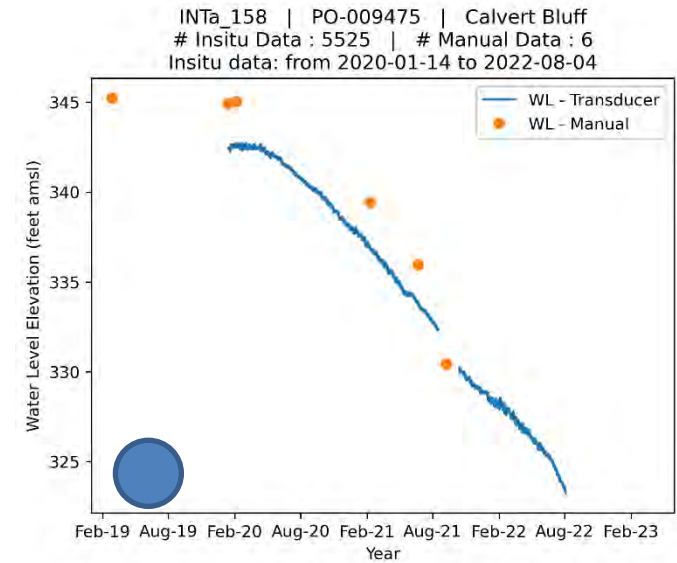
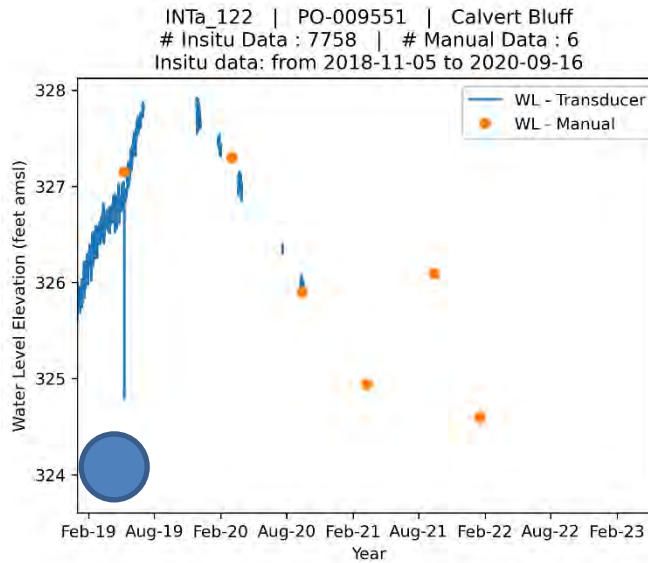


Calvert Bluff

Percent of
Screen in
Aquifer



[preliminary result,
subject to revise]



Simsboro

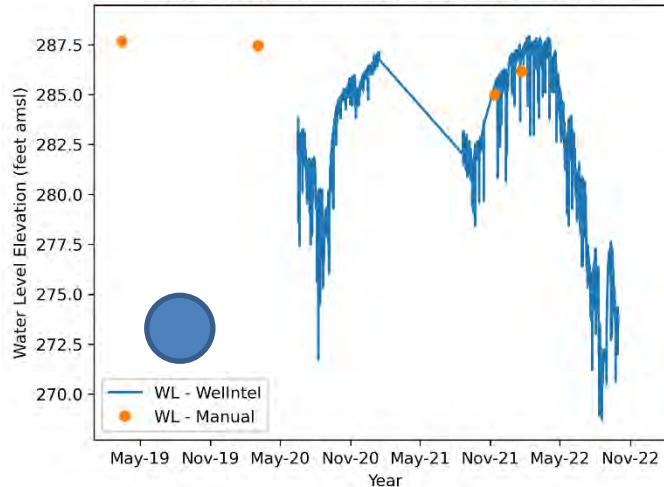
Percent of
Screen in
Aquifer

 >70%

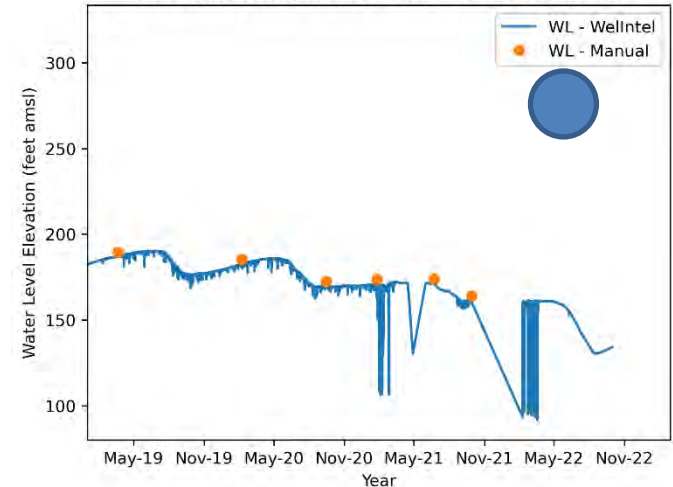
 <70%

[preliminary result,
subject to revise]

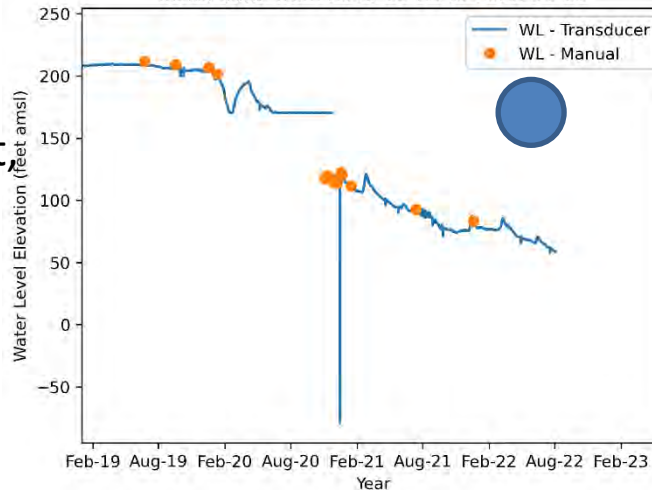
INTa_113 | PO-008274 | Simsboro
Continuous Data : 2704 | # Manual Data : 4
Continuous data: from 2020-06-15 to 2022-09-30



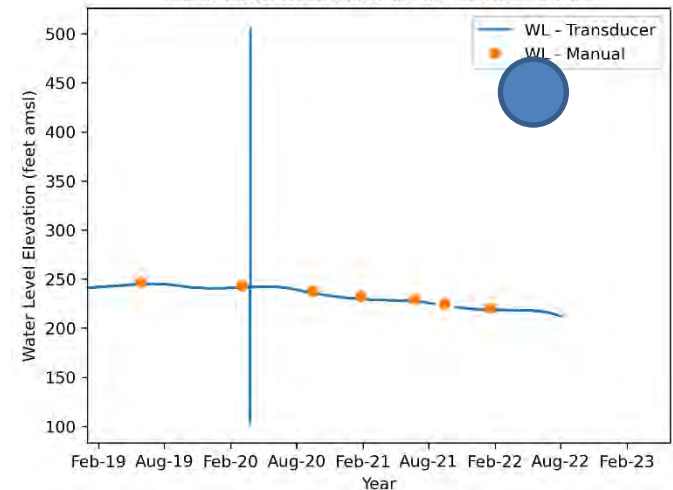
INTa_45 | PO-001082 | Simsboro
Continuous Data : 5485 | # Manual Data : 6
Continuous data: from 2018-09-11 to 2022-09-30



INTa_76 | PO-008767 | Simsboro
Insitu Data : 59416 | # Manual Data : 16
Insitu data: from 2013-09-25 to 2022-08-03



INTa_83 | PO-009166 | Simsboro
Insitu Data : 37650 | # Manual Data : 7
Insitu data: from 2018-01-01 to 2022-08-04



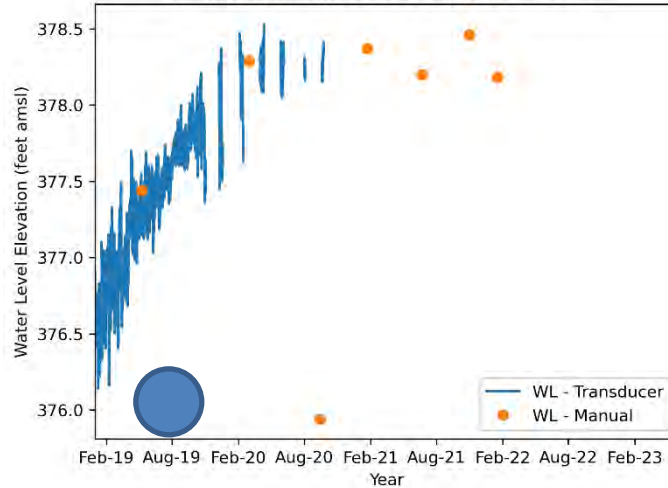
Simsboro

Percent of
Screen in
Aquifer

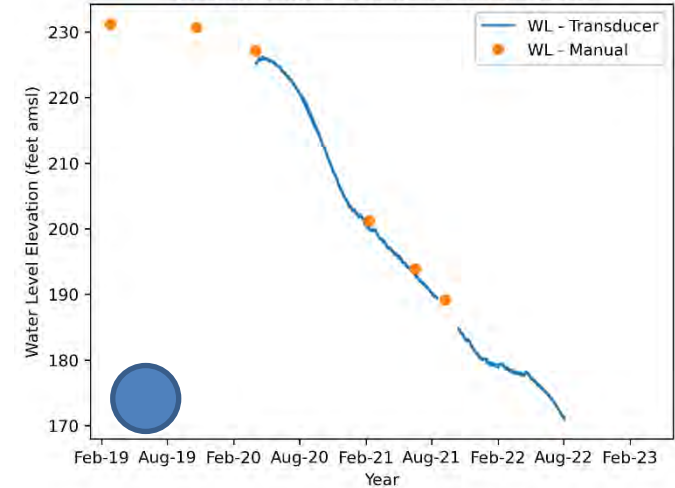


[preliminary result,
subject to revise]

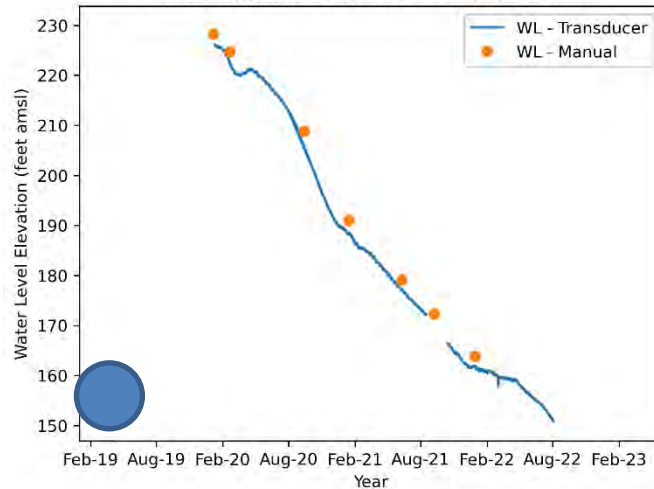
INTa_121 | PO-009545 | Simsboro
Insitu Data : 9706 | # Manual Data : 7
Insitu data: from 2018-11-05 to 2020-09-24



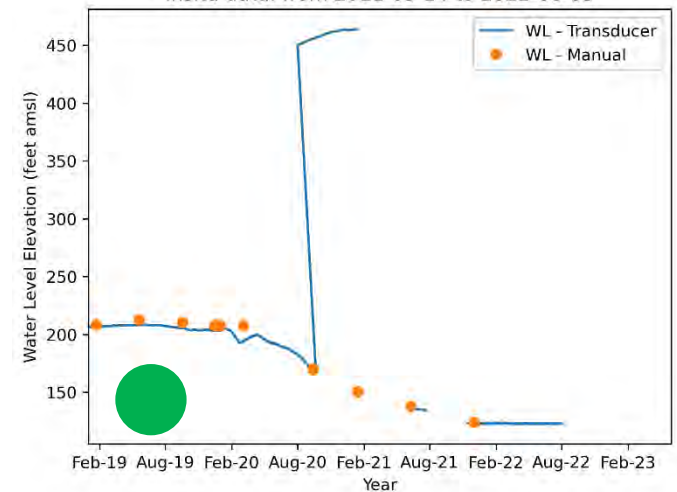
INTa_86 | PO-009230 | Simsboro
Insitu Data : 5095 | # Manual Data : 6
Insitu data: from 2020-04-02 to 2022-08-04



INTa_109 | PO-009446 | Simsboro
Insitu Data : 5515 | # Manual Data : 7
Insitu data: from 2020-01-09 to 2022-08-03



INTa_62 | PO-006621 | Simsboro & Calvert Bluff
Insitu Data : 39807 | # Manual Data : 10
Insitu data: from 2011-09-14 to 2022-08-03



Hooper

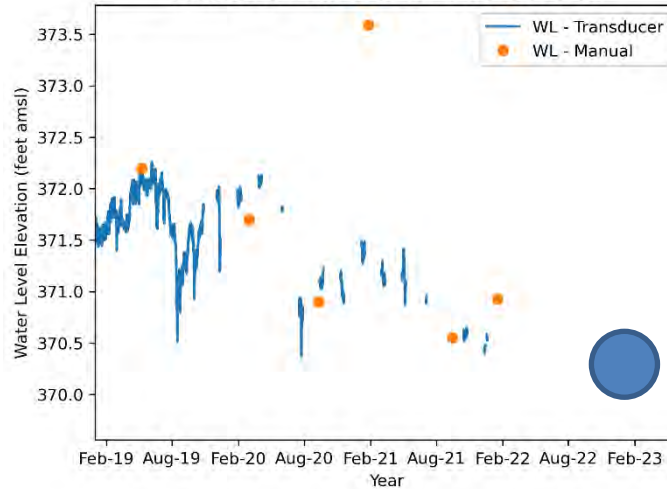
Percent of
Screen in
Aquifer

 >70%

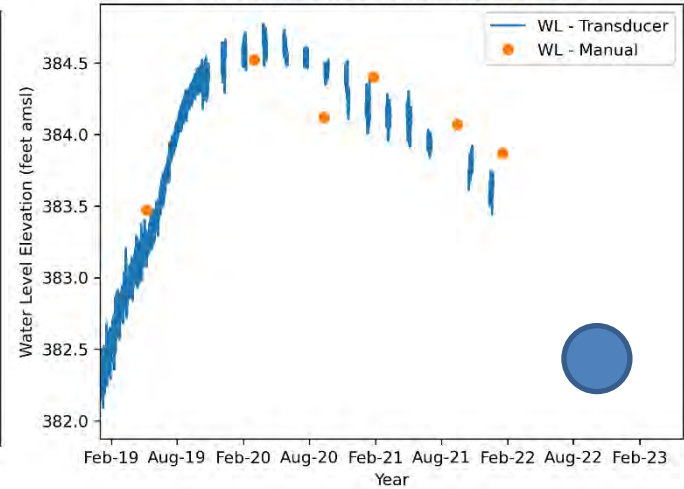
 <70%

[preliminary result,
subject to revise]

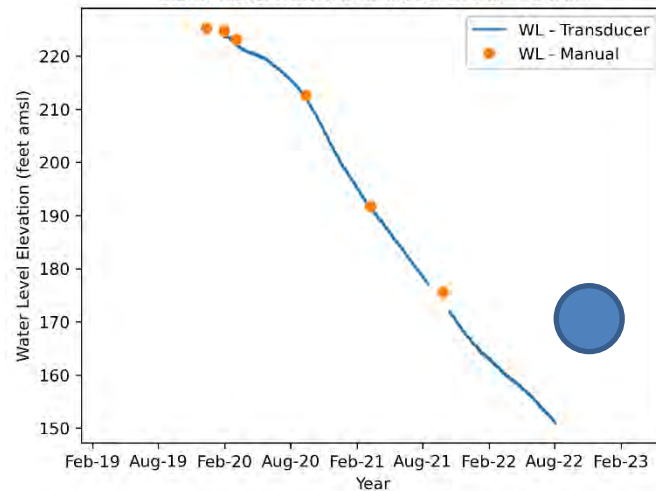
INTa_123 | PO-009553 | Hooper
Insitu Data : 11160 | # Manual Data : 6
Insitu data: from 2018-10-30 to 2021-12-20



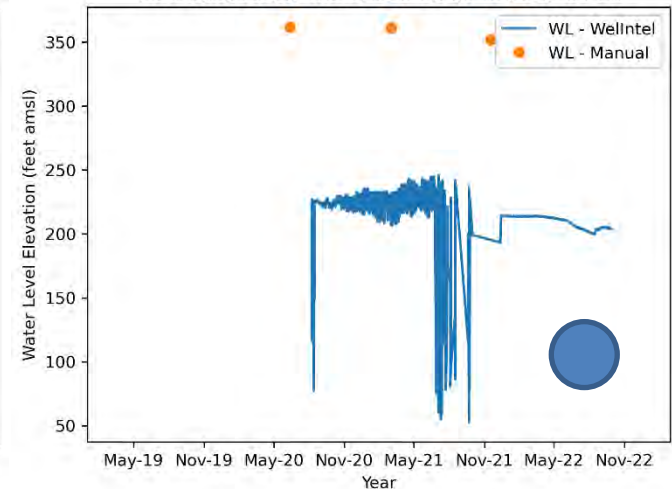
INTa_124 | PO-009555 | Hooper
Insitu Data : 11919 | # Manual Data : 6
Insitu data: from 2018-10-30 to 2021-12-22



INTa_250 | PO-011118 | Hooper
Insitu Data : 5239 | # Manual Data : 6
Insitu data: from 2020-01-30 to 2022-08-03



INTa_268 | PO-011283 | Hooper
Continuous Data : 4124 | # Manual Data : 3
Continuous data: from 2020-08-07 to 2022-09-28



Hooper

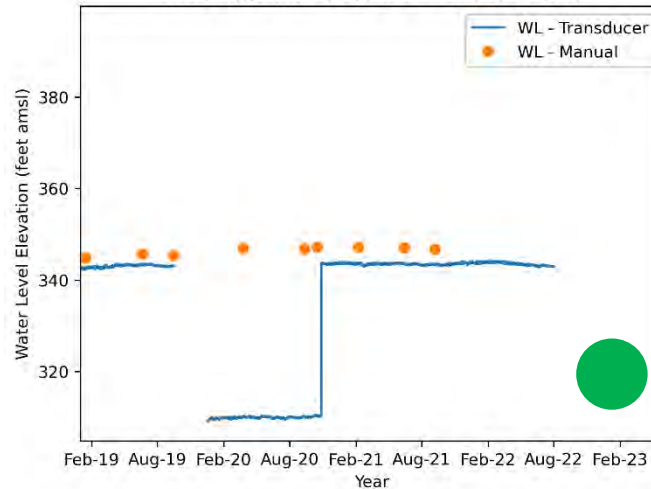
Percent of
Screen in
Aquifer

 >70%

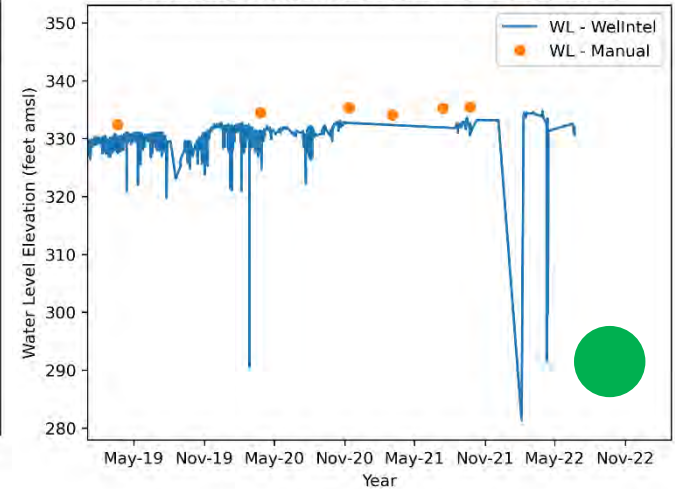
 <70%

[preliminary result,
subject to revise]

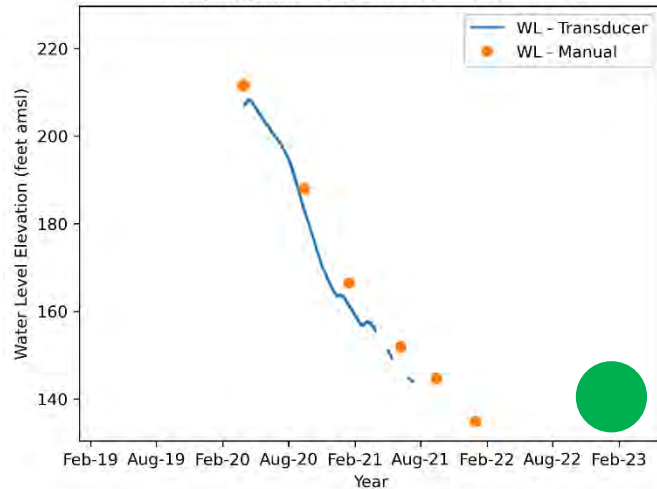
INTa_1 | PO-000025 | Simsboro & Hooper
Insitu Data : 71681 | # Manual Data : 9
Insitu data: from 2012-03-14 to 2022-08-02



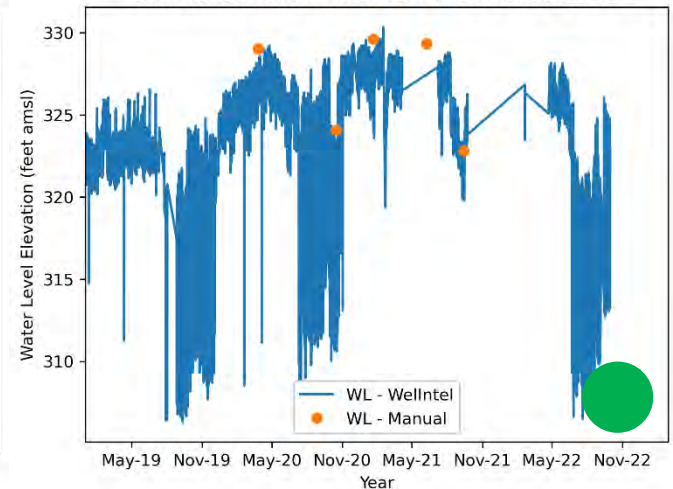
INTa_11 | PO-000121 | Hooper & Simsboro
Continuous Data : 7476 | # Manual Data : 6
Continuous data: from 2018-09-12 to 2022-06-21



INTa_85 | PO-009215 | Simsboro & Hooper
Insitu Data : 10479 | # Manual Data : 7
Insitu data: from 2020-03-31 to 2021-07-10

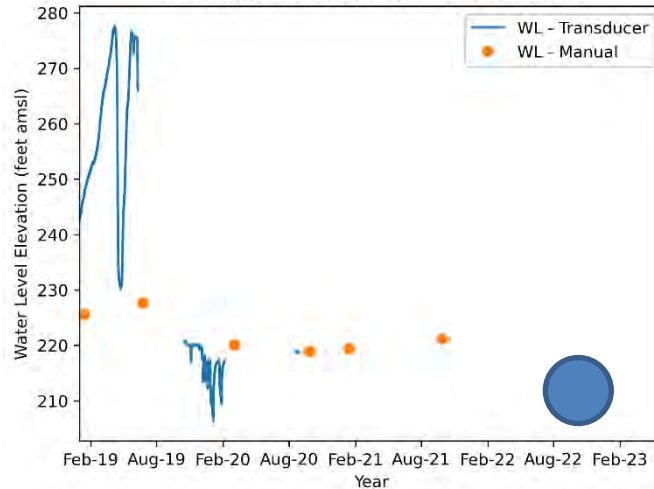


INTa_233 | PO-009706 | Simsboro & Hooper
Continuous Data : 7510 | # Manual Data : 5
Continuous data: from 2018-09-12 to 2022-09-30



Yegua-Jackson

INTa_30 | PO-000698 | Yegua-Jackson
Insitu Data : 68506 | # Manual Data : 6
Insitu data: from 2011-12-14 to 2020-08-29



Percent of
Screen in
Aquifer

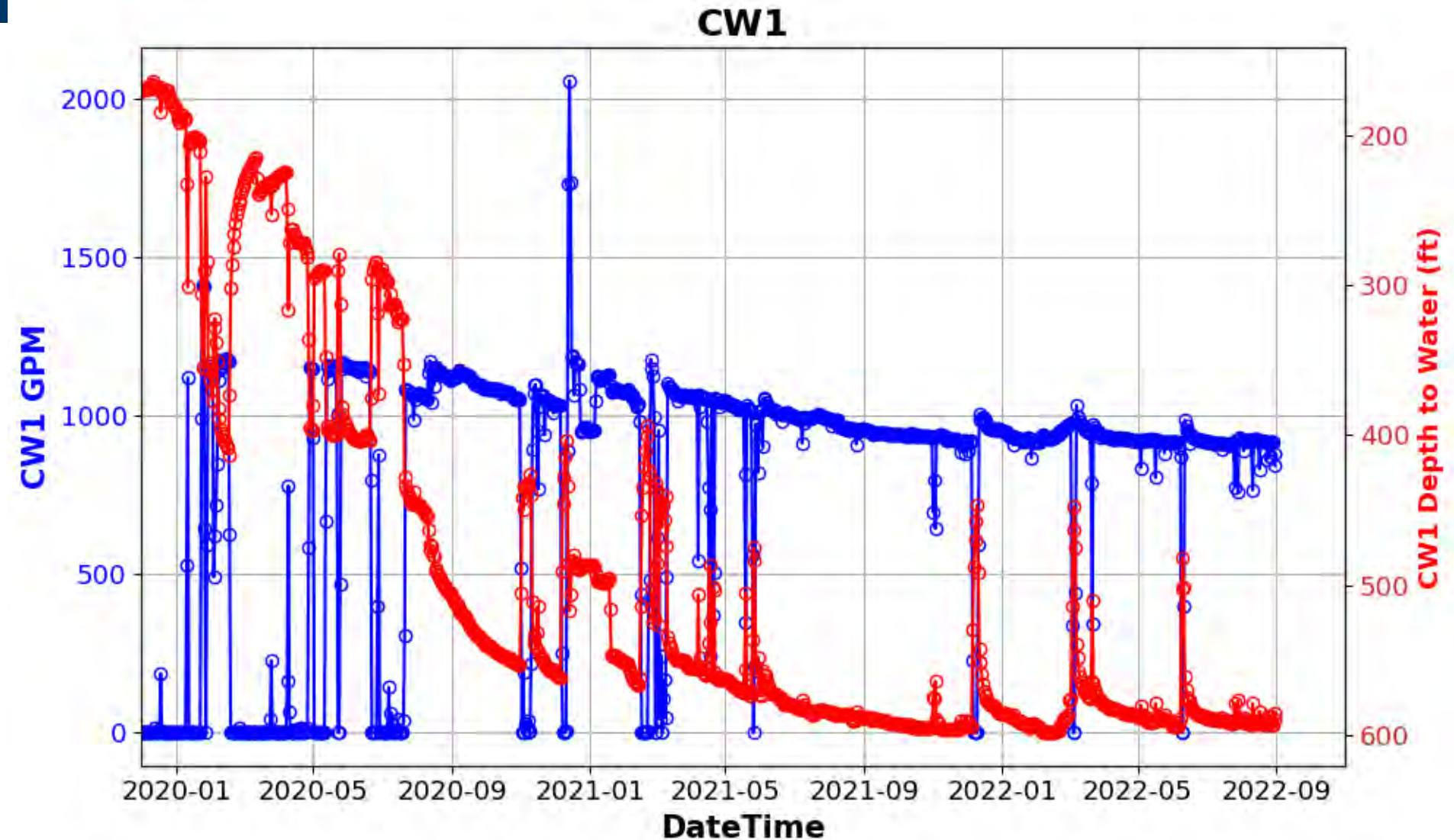
>70%

<70%

[preliminary result,
subject to revise]

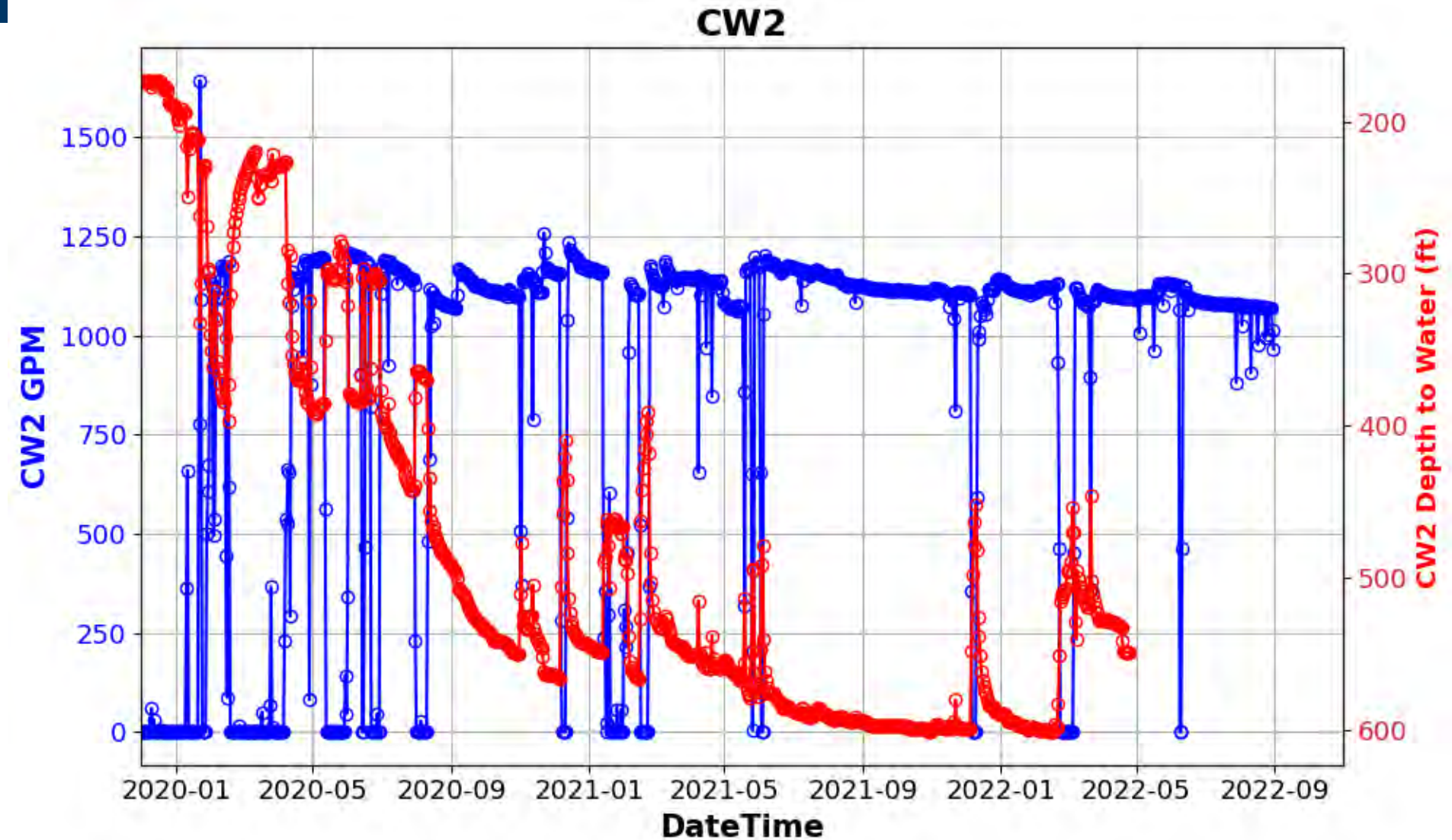
Transducer Data from Vista Ridge and 130 Project

Vista Ridge Well CW1



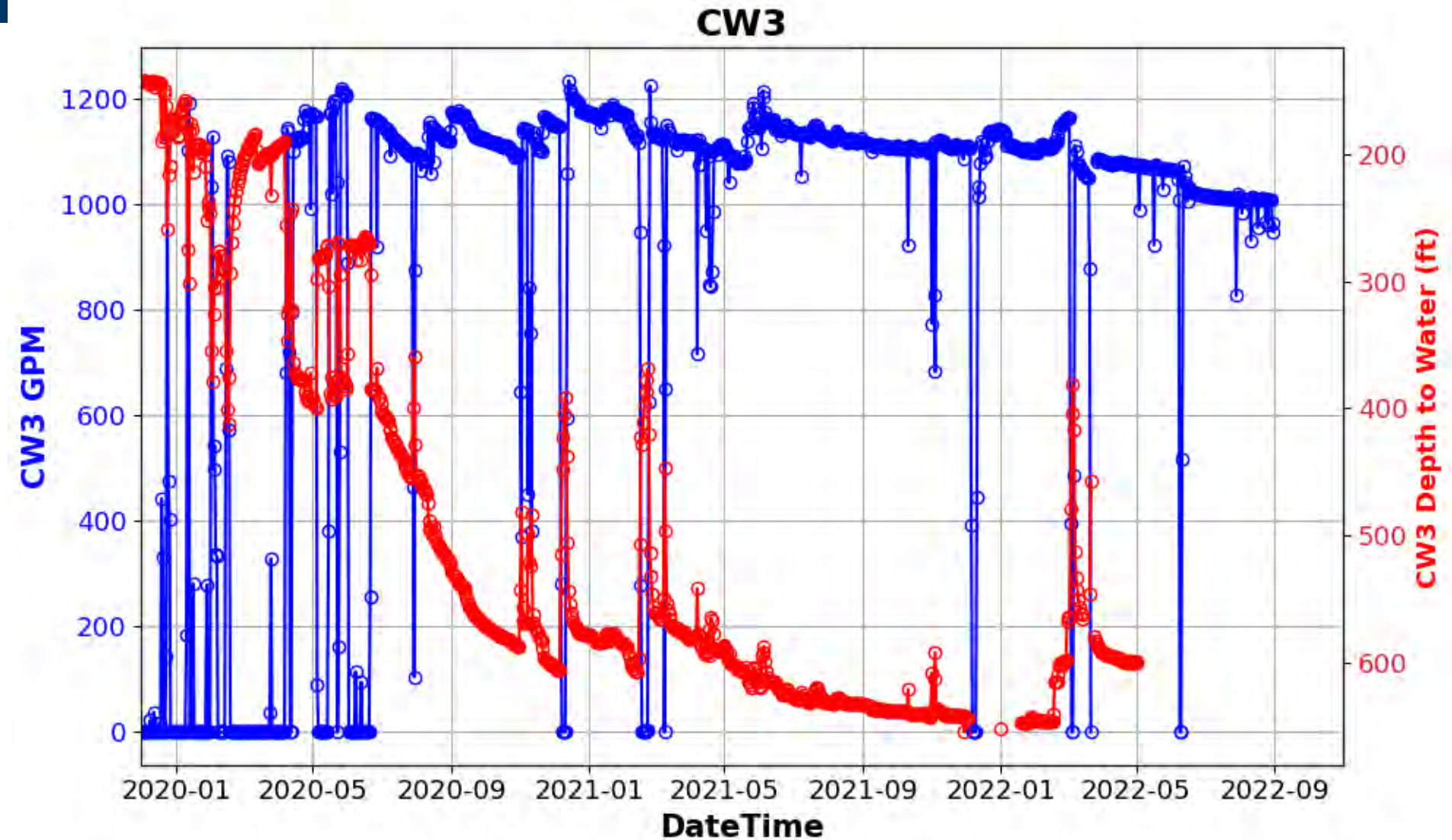
[preliminary result,
subject to revise]

Vista Ridge Well CW2



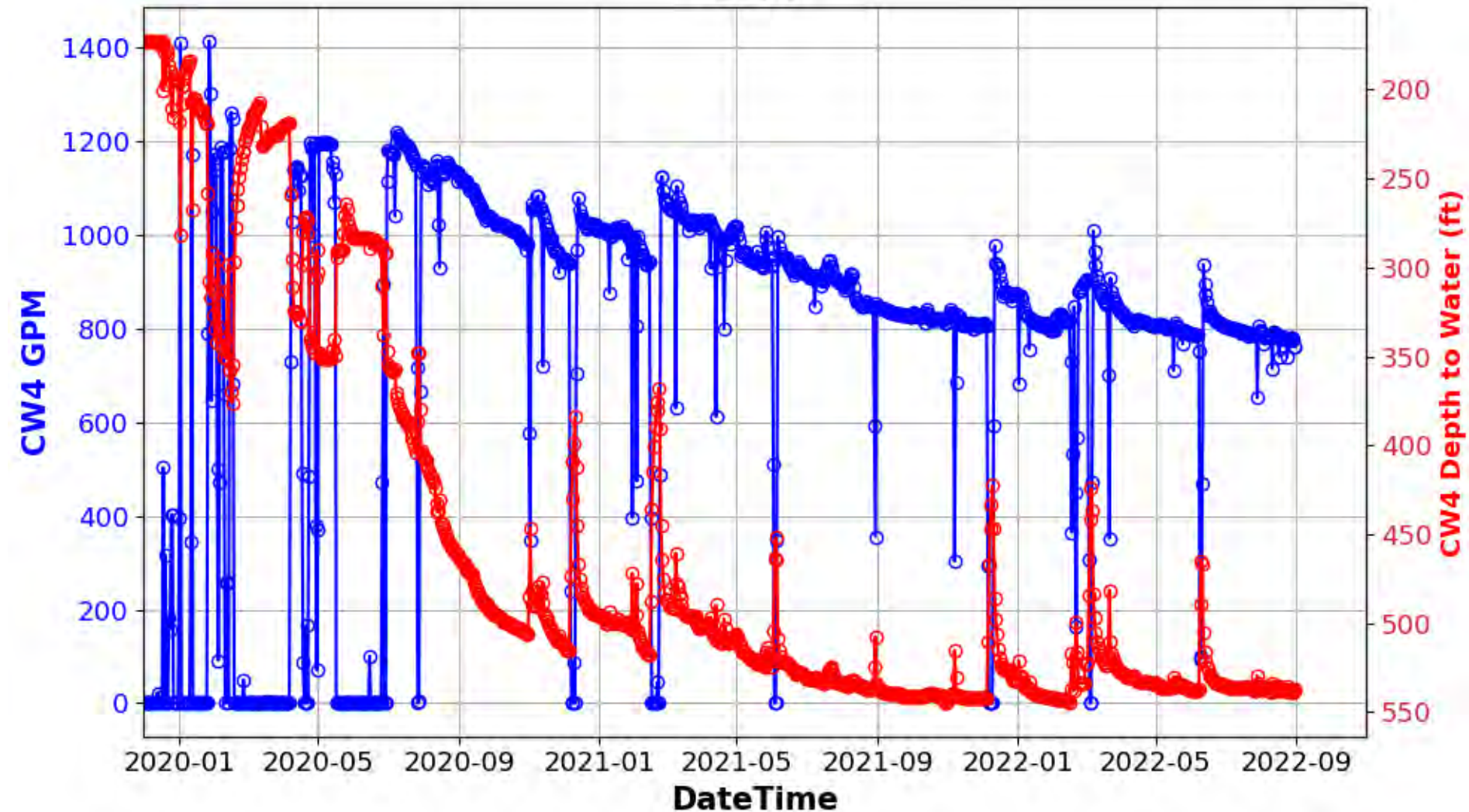
[preliminary result,
subject to revise]

Vista Ridge Well CW3



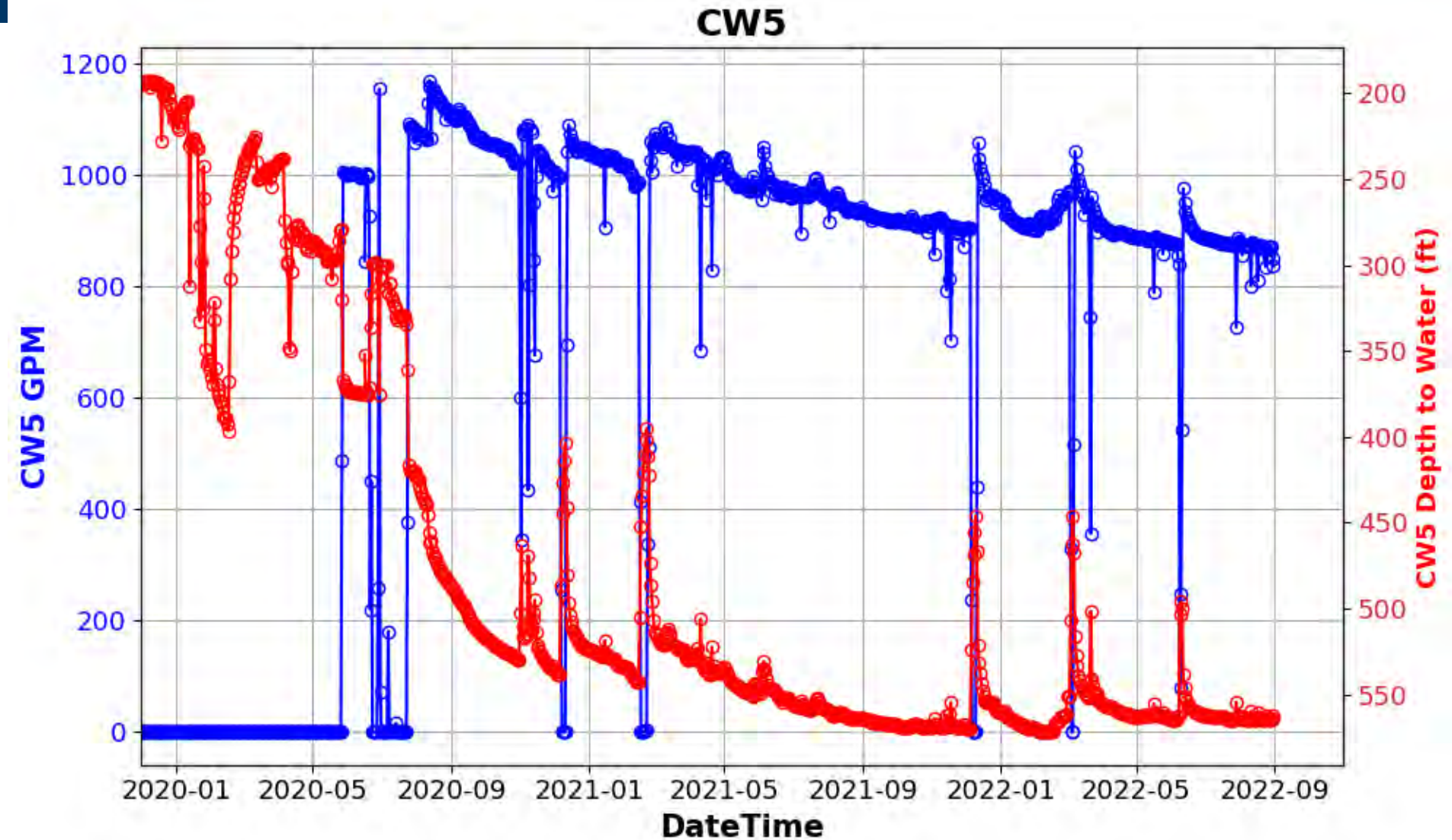
Vista Ridge Well CW4

CW4



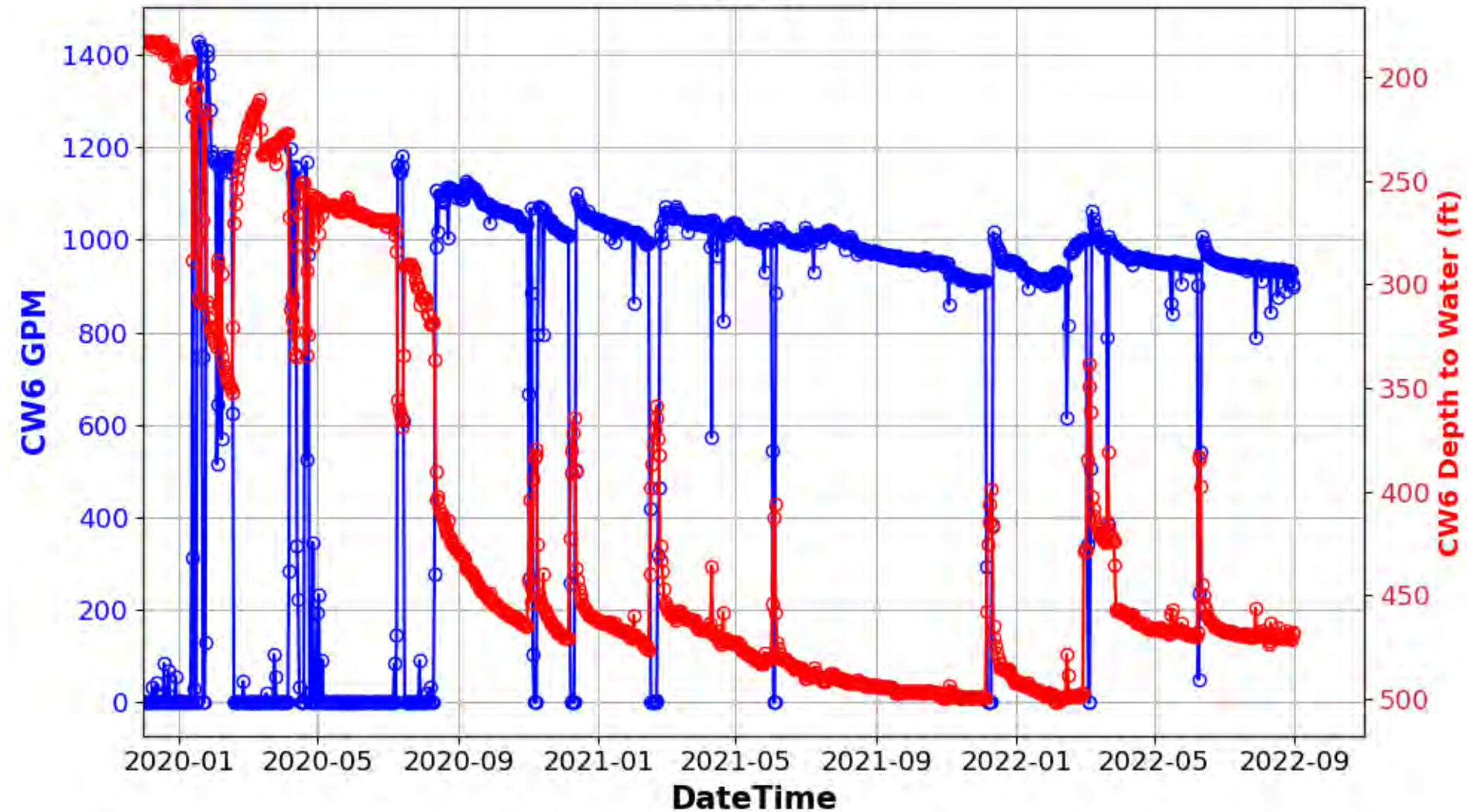
[preliminary result,
subject to revise]

Vista Ridge Well CW5



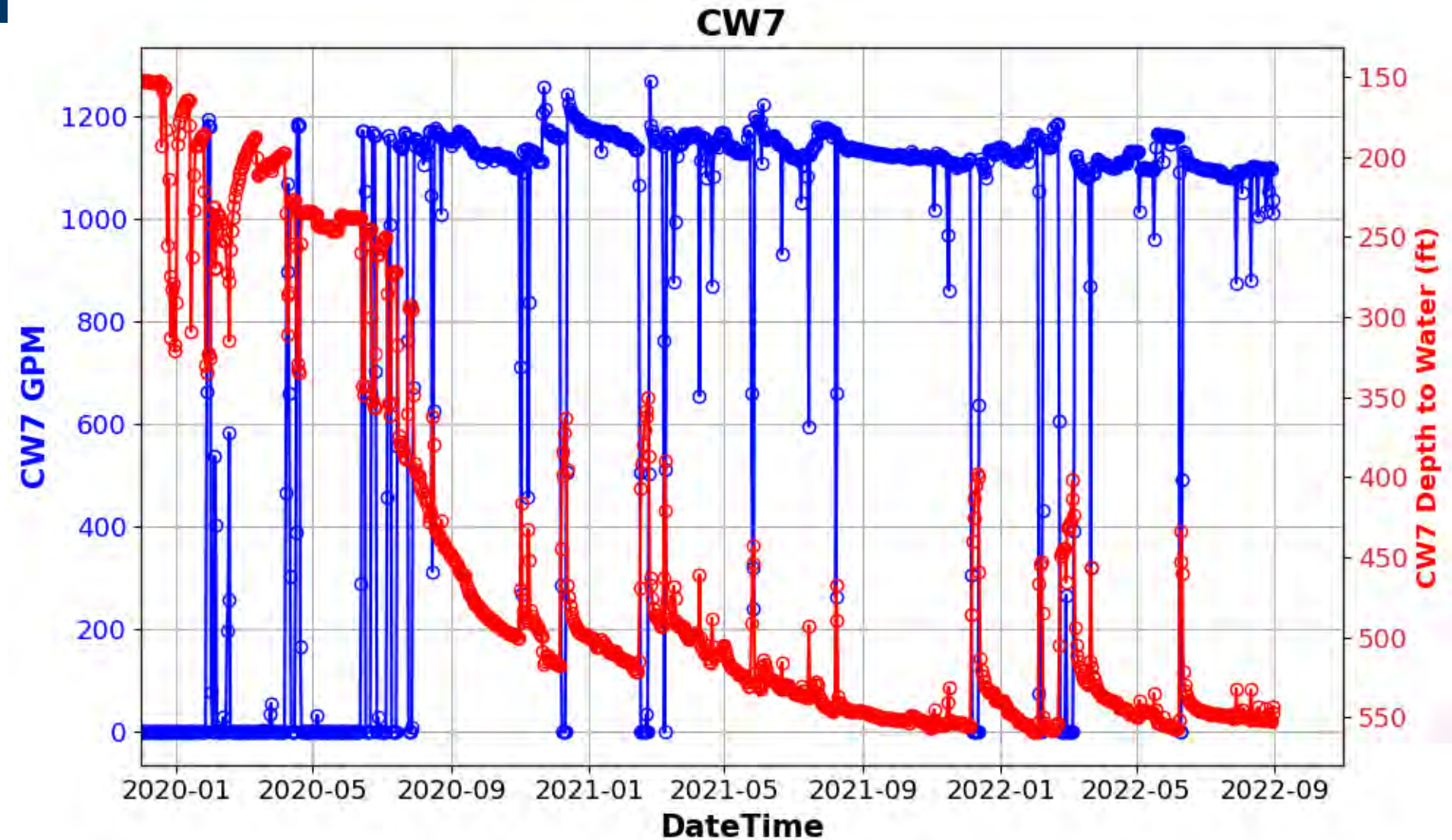
Vista Ridge Well CW6

CW6



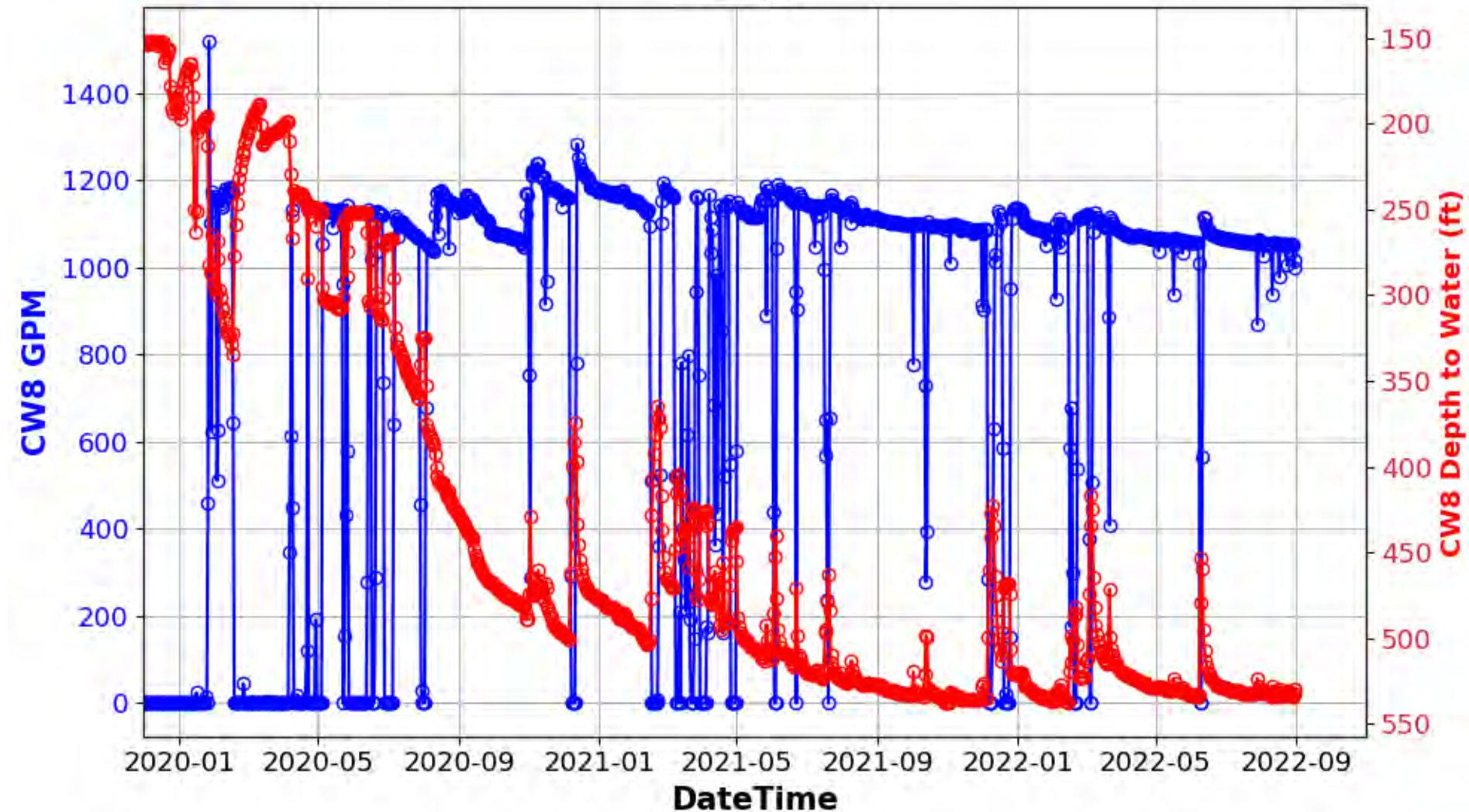
[preliminary result,
subject to revise]

Vista Ridge Well CW7



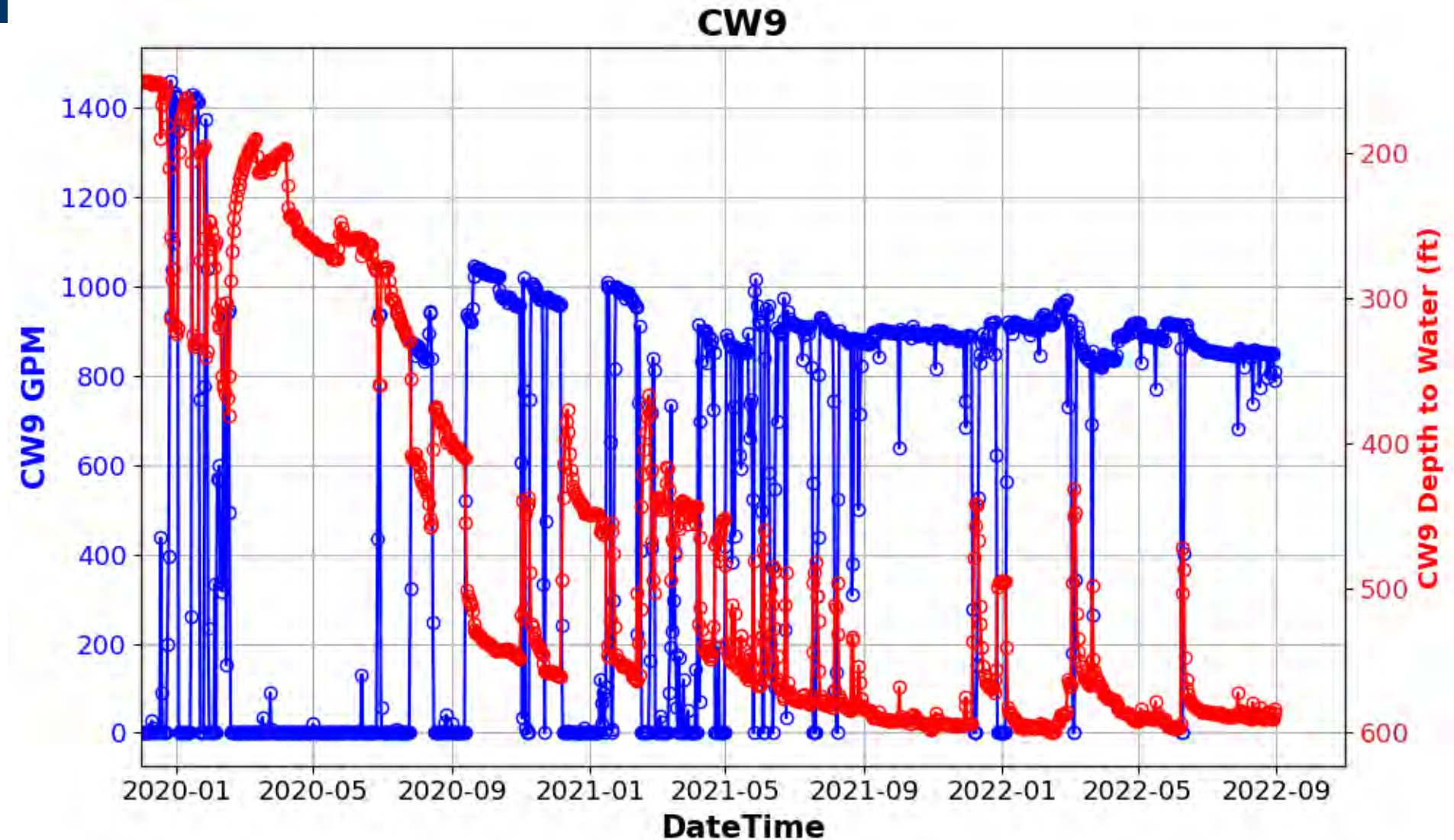
Vista Ridge Well CW8

CW8



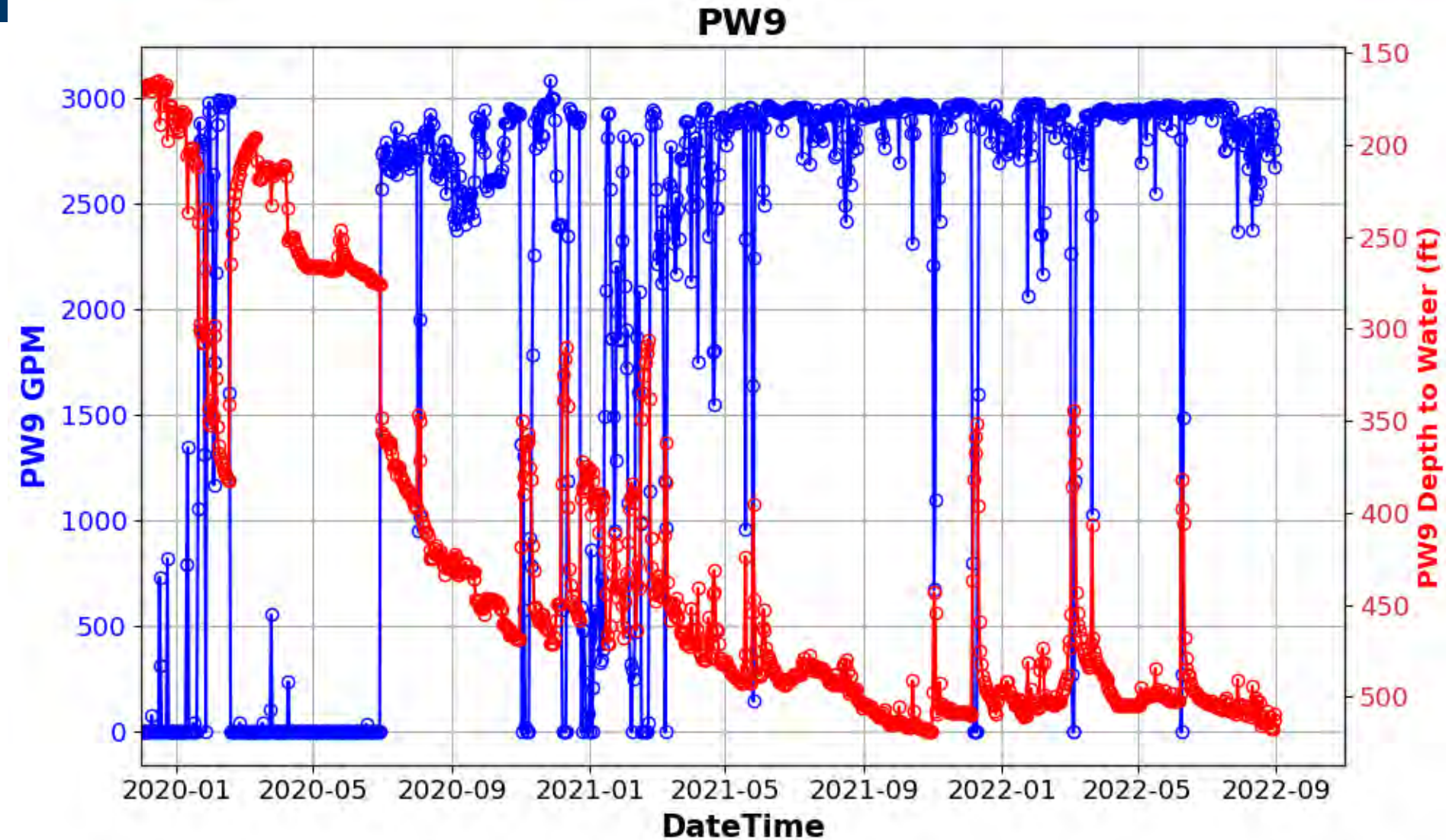
[preliminary result,
subject to revise]

Vista Ridge Well CW9



[preliminary result,
subject to revise]

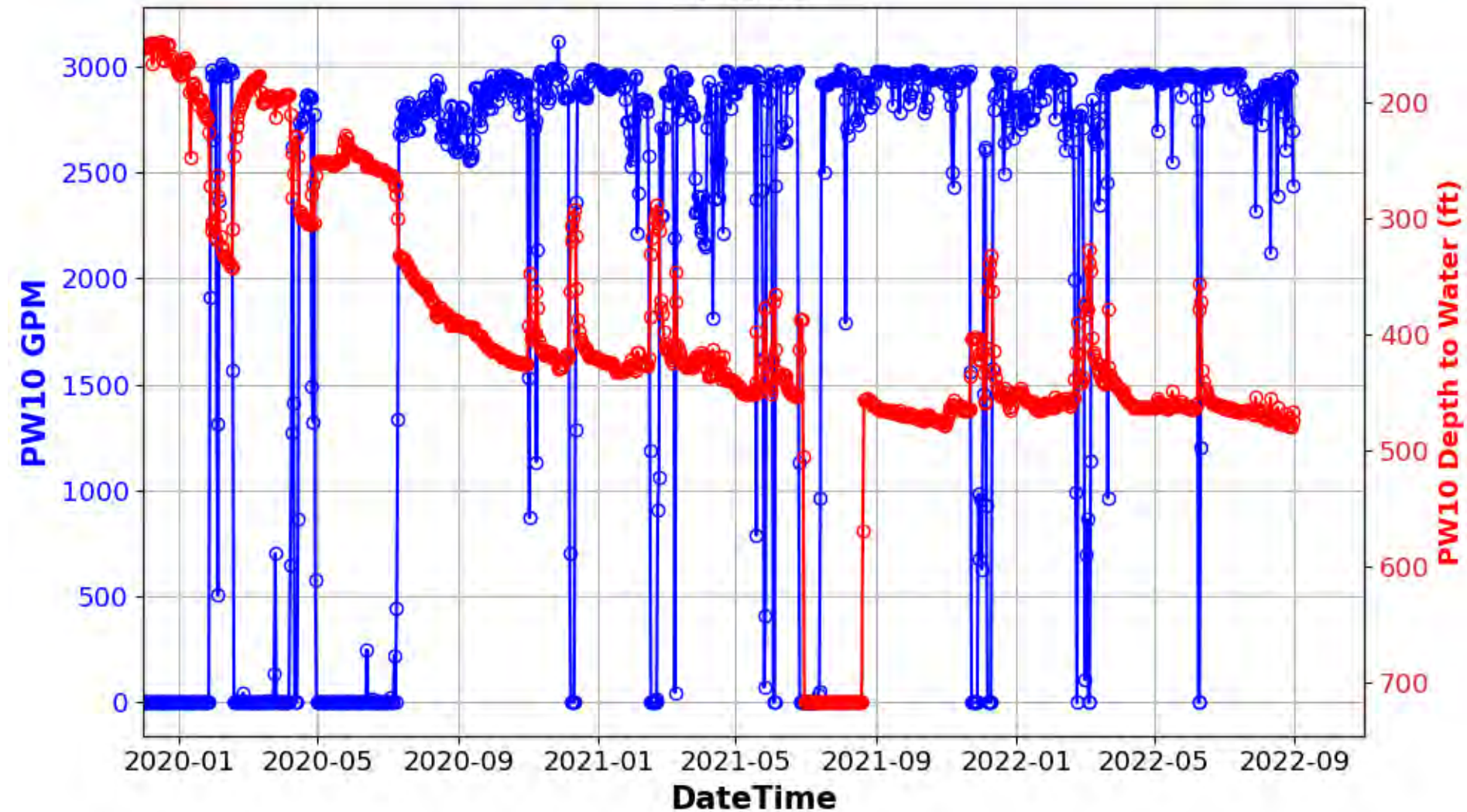
Vista Ridge Well PW9



[preliminary result,
subject to revise]

Vista Ridge Well PW10

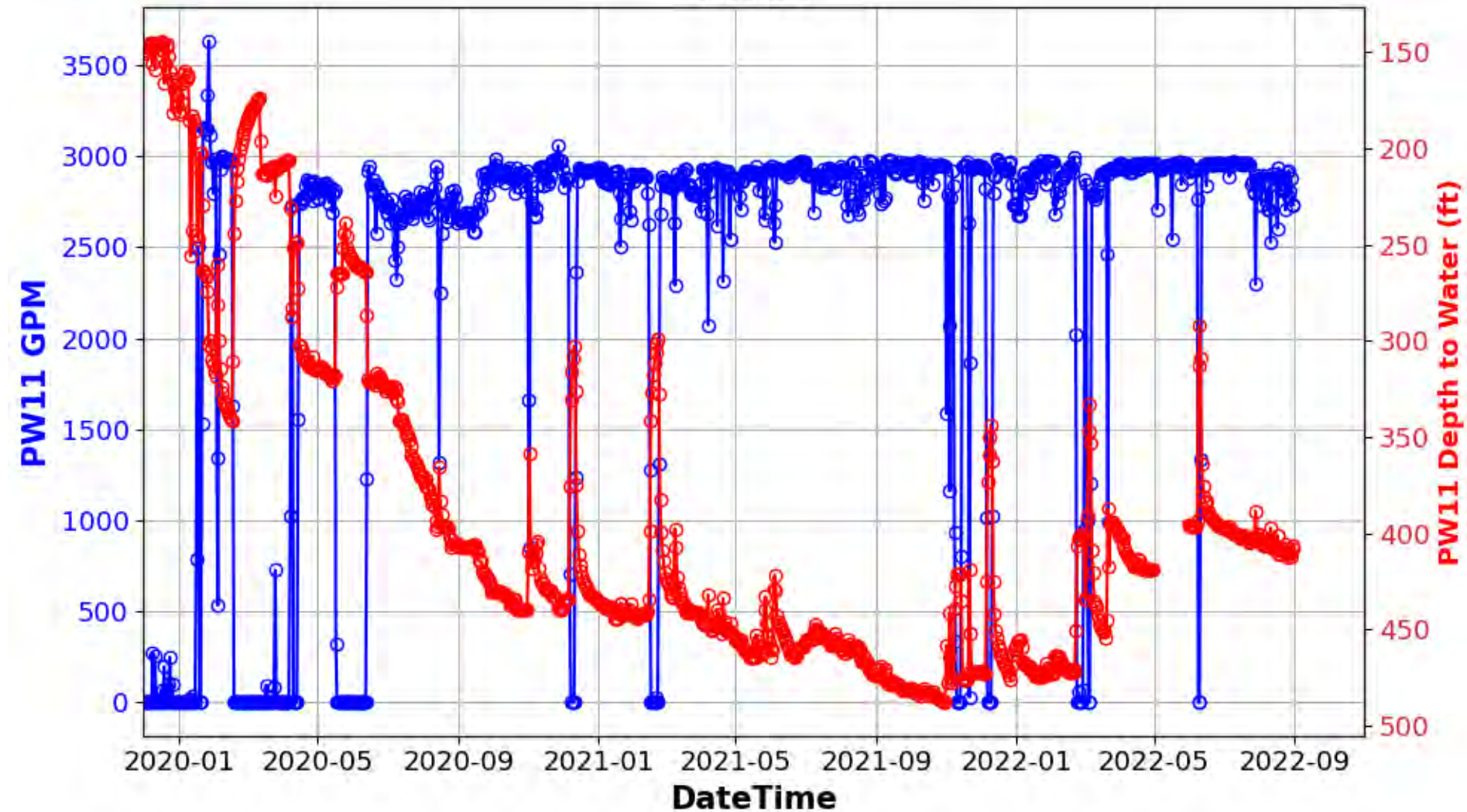
PW10



[preliminary result,
subject to revise]

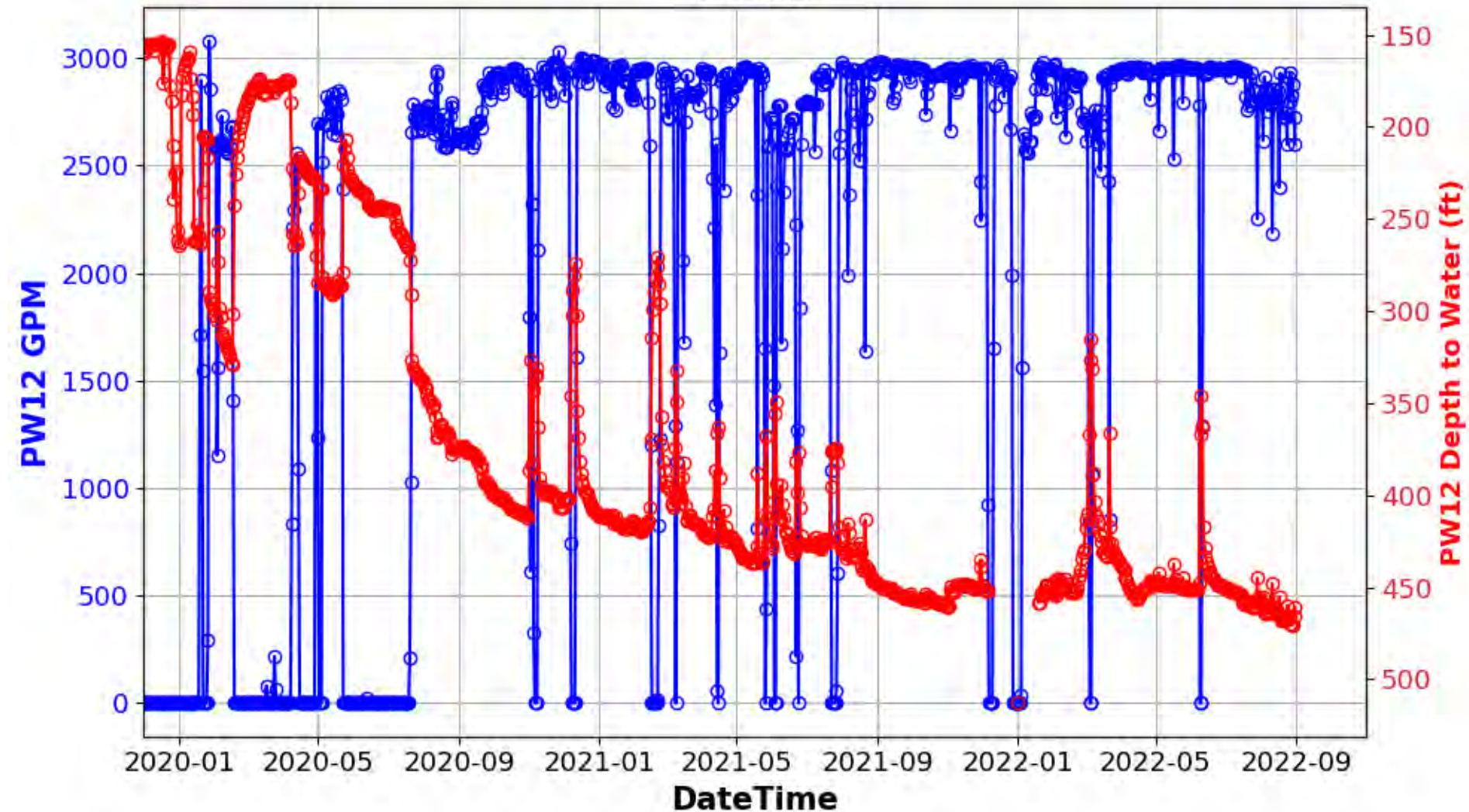
Vista Ridge Well PW11

PW11



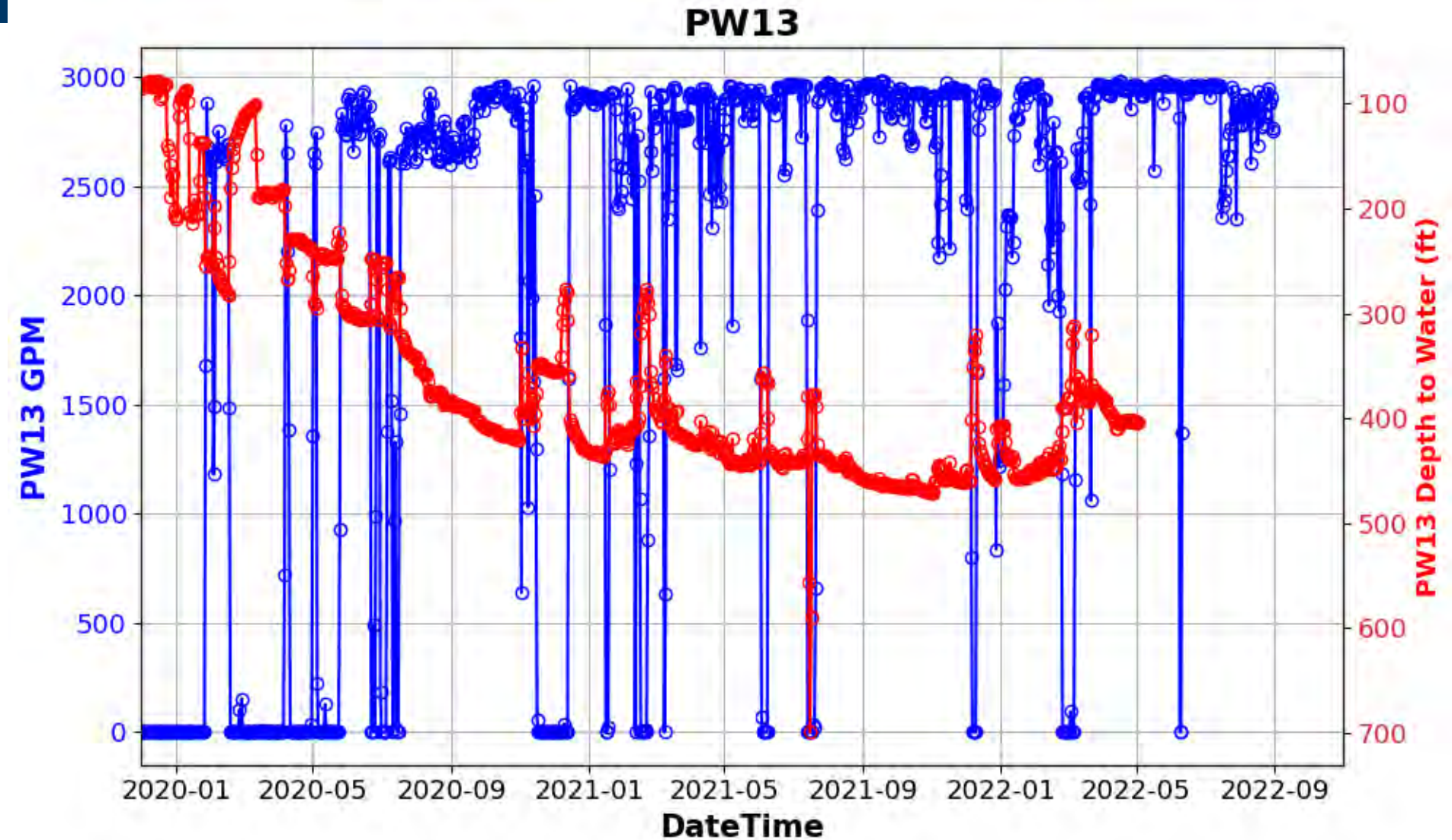
Vista Ridge Well PW12

PW12



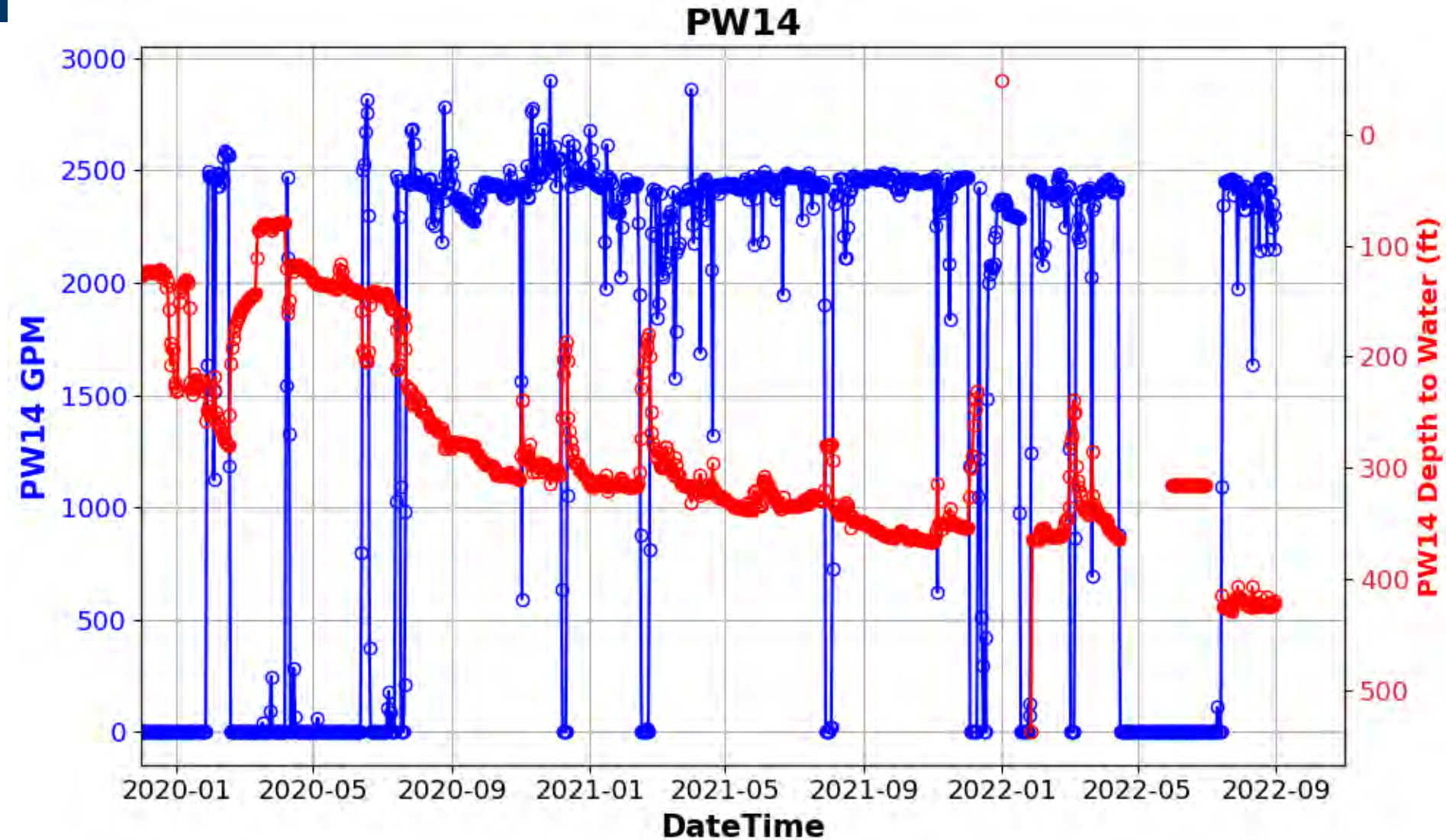
[preliminary result,
subject to revise]

Vista Ridge Well PW13



[preliminary result,
subject to revise]

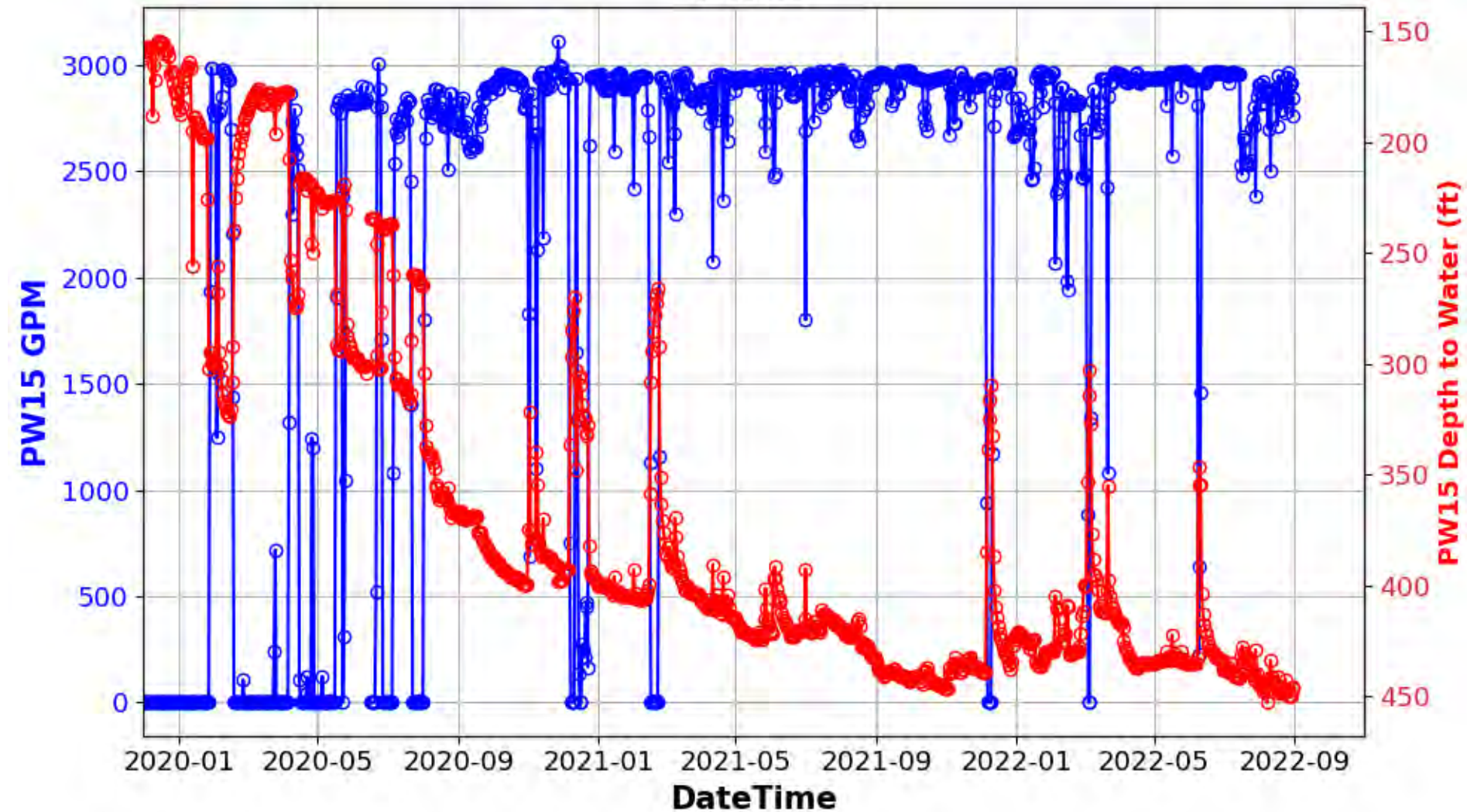
Vista Ridge Well PW14



[preliminary result,
subject to revise]

Vista Ridge Well PW15

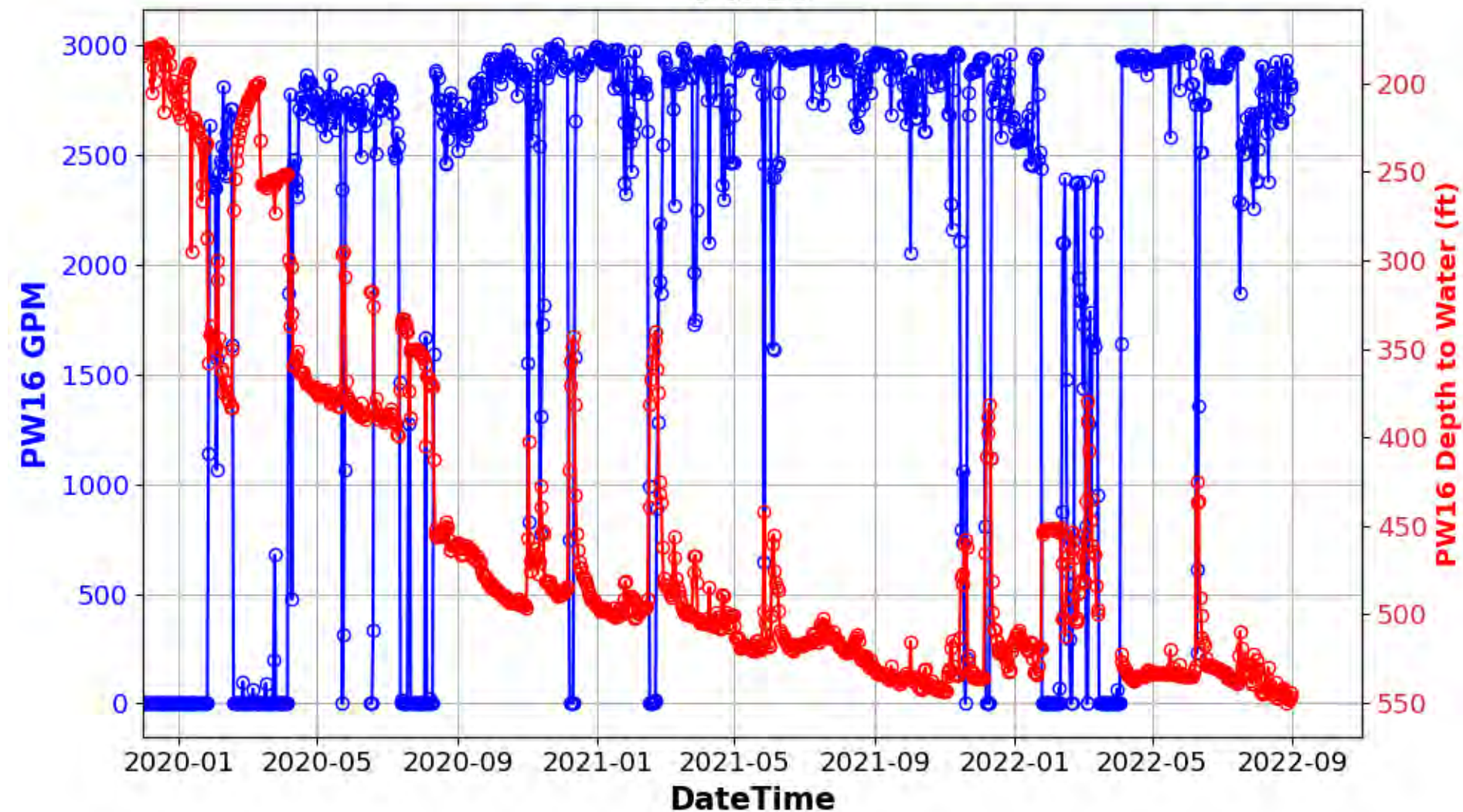
PW15



[preliminary result,
subject to revise]

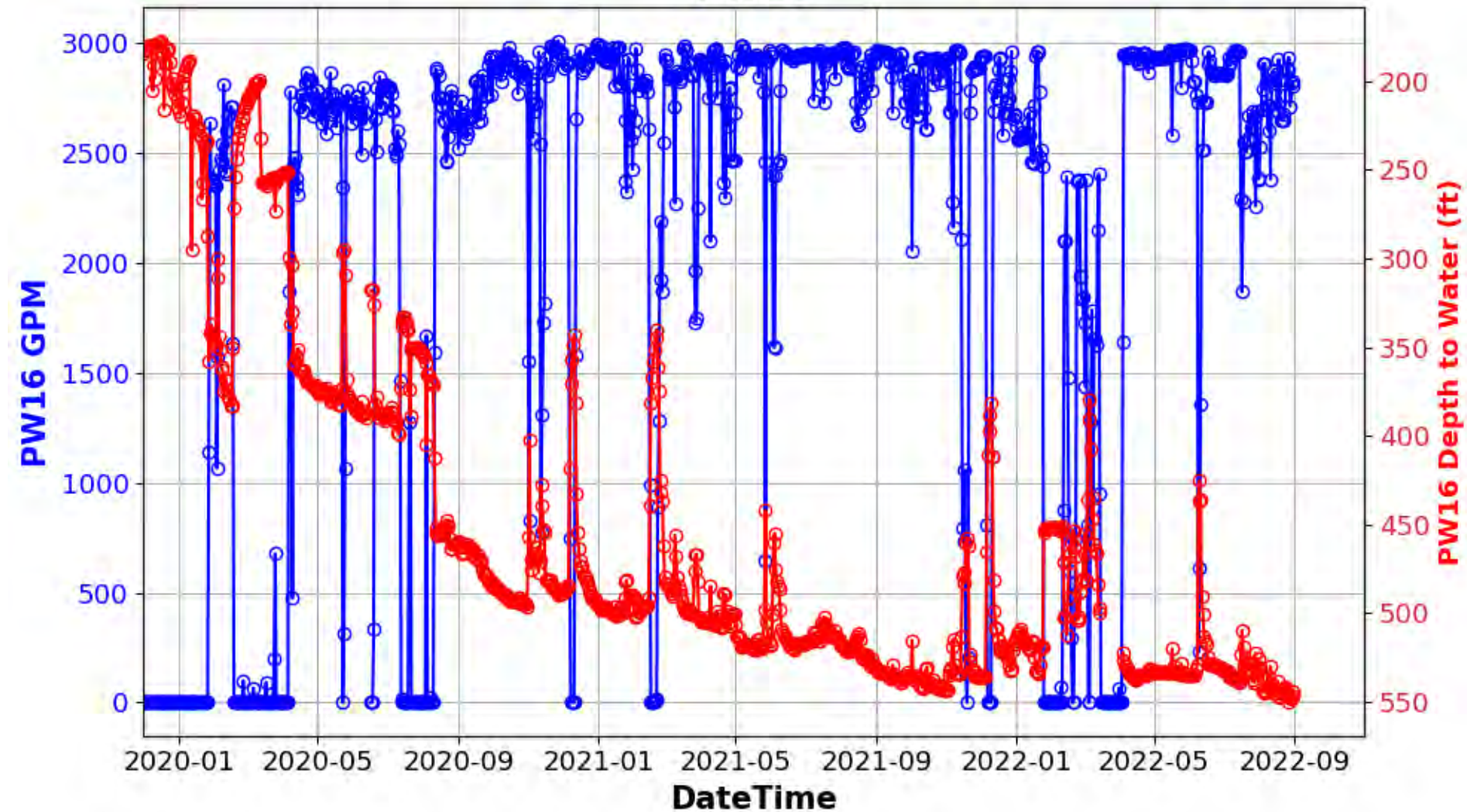
Vista Ridge Well PW16

PW16



Vista Ridge Well PW16

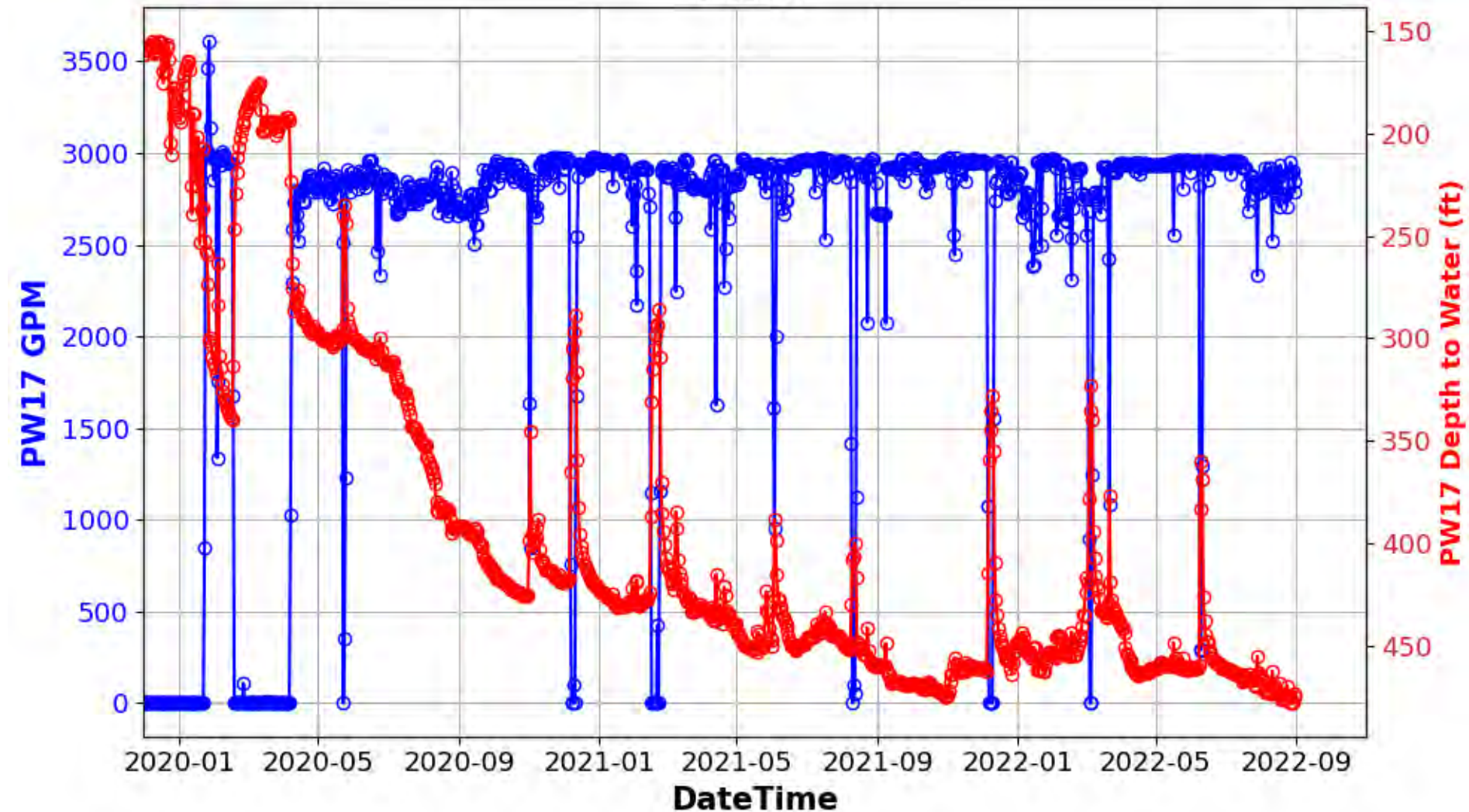
PW16



[preliminary result,
subject to revise]

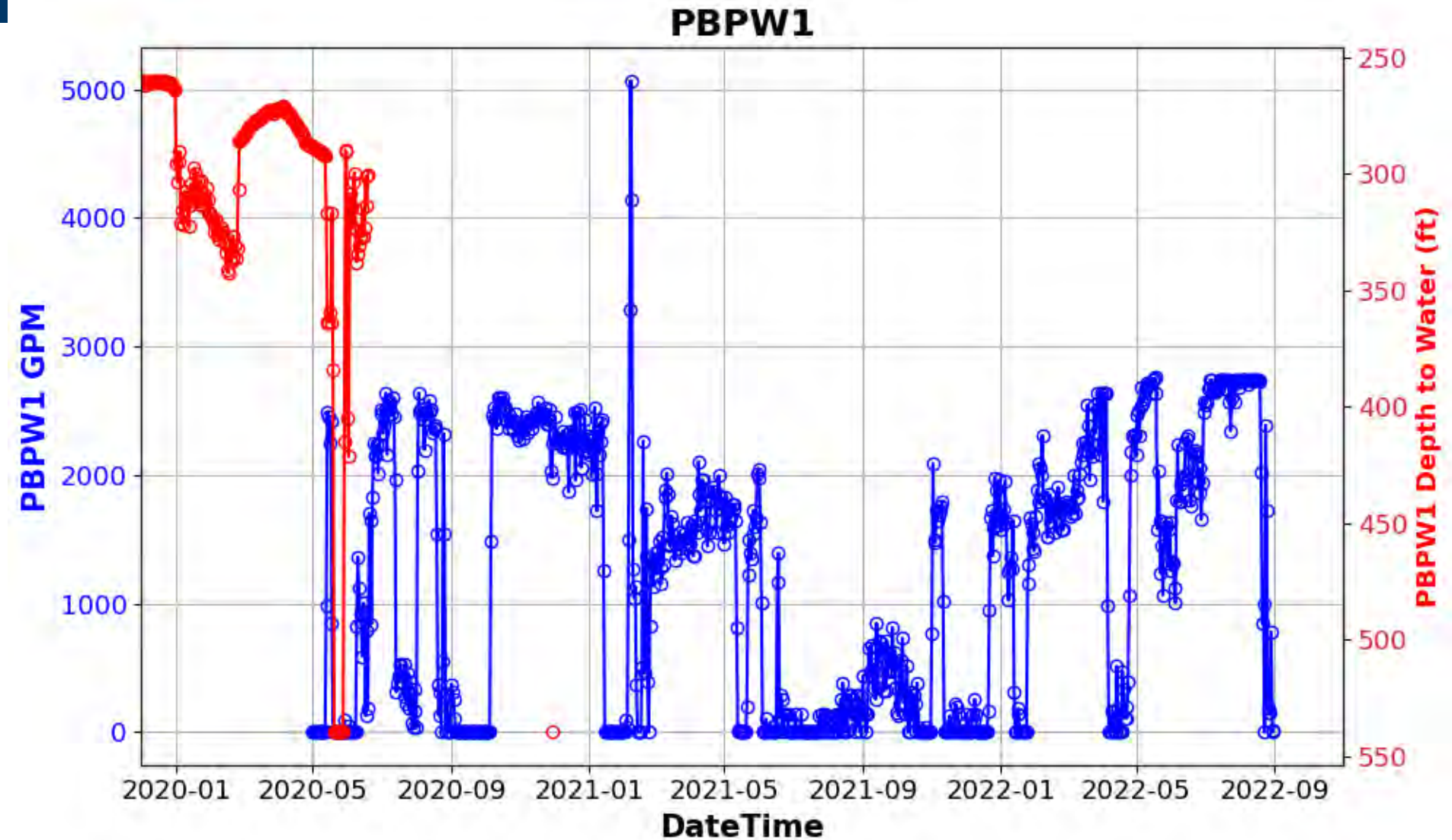
Vista Ridge Well PW17

PW17



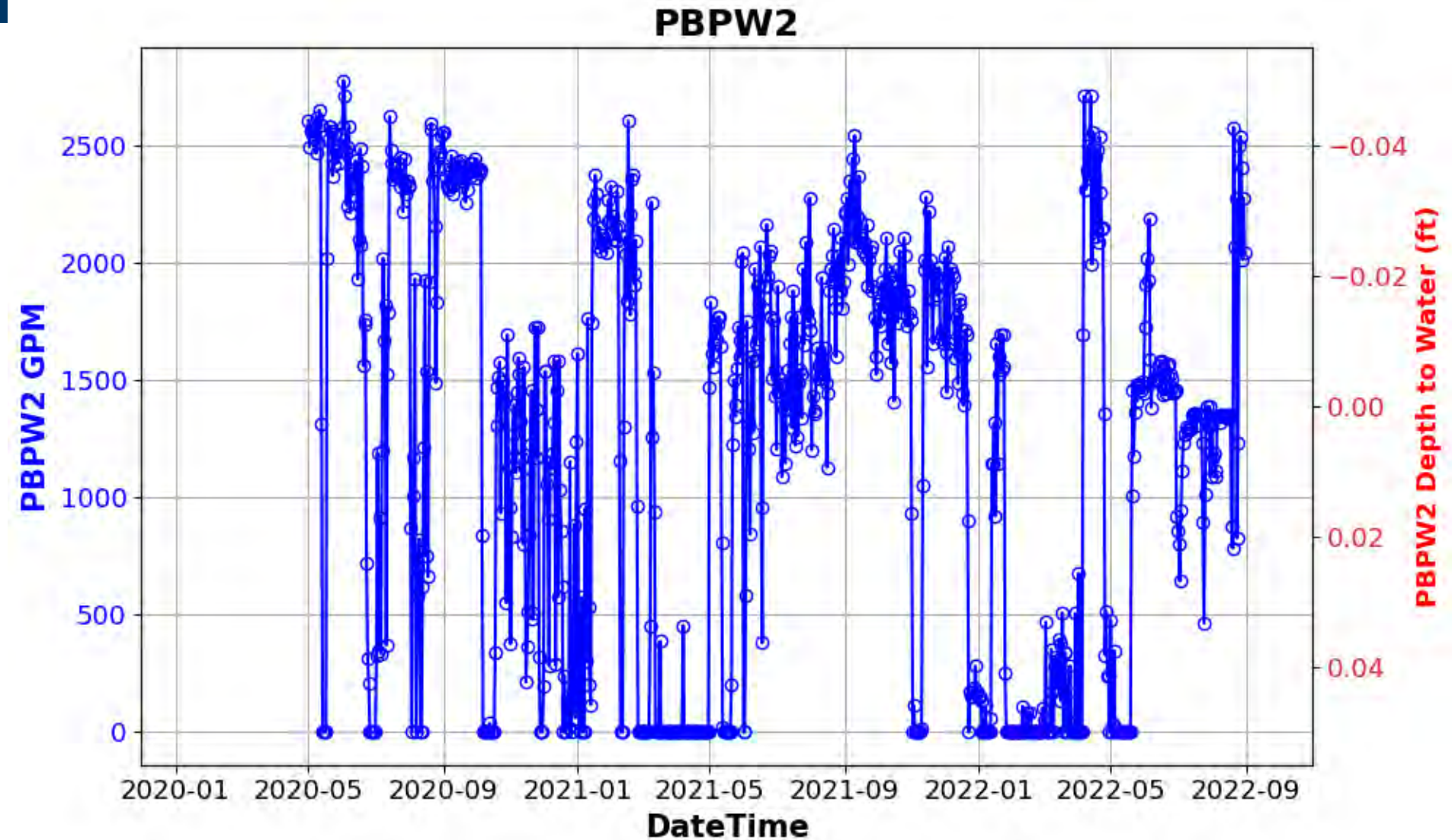
[preliminary result,
subject to revise]

130 Well PBW1



[preliminary result,
subject to revise]

130 Well PBW2



[preliminary result,
subject to revise]



Questions ?