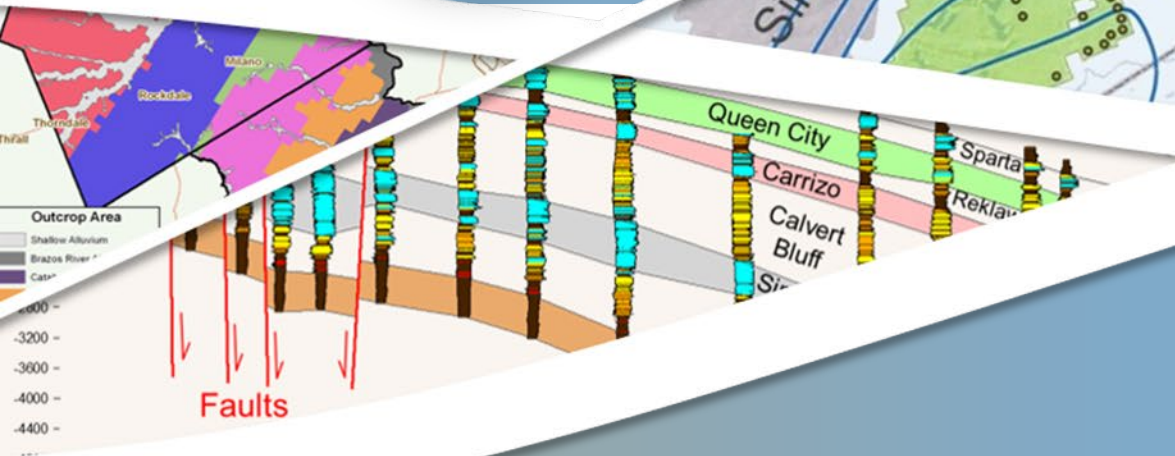


Update on Operational Drilling and Operating Permit No. POS D&O 0148



August 9, 2022

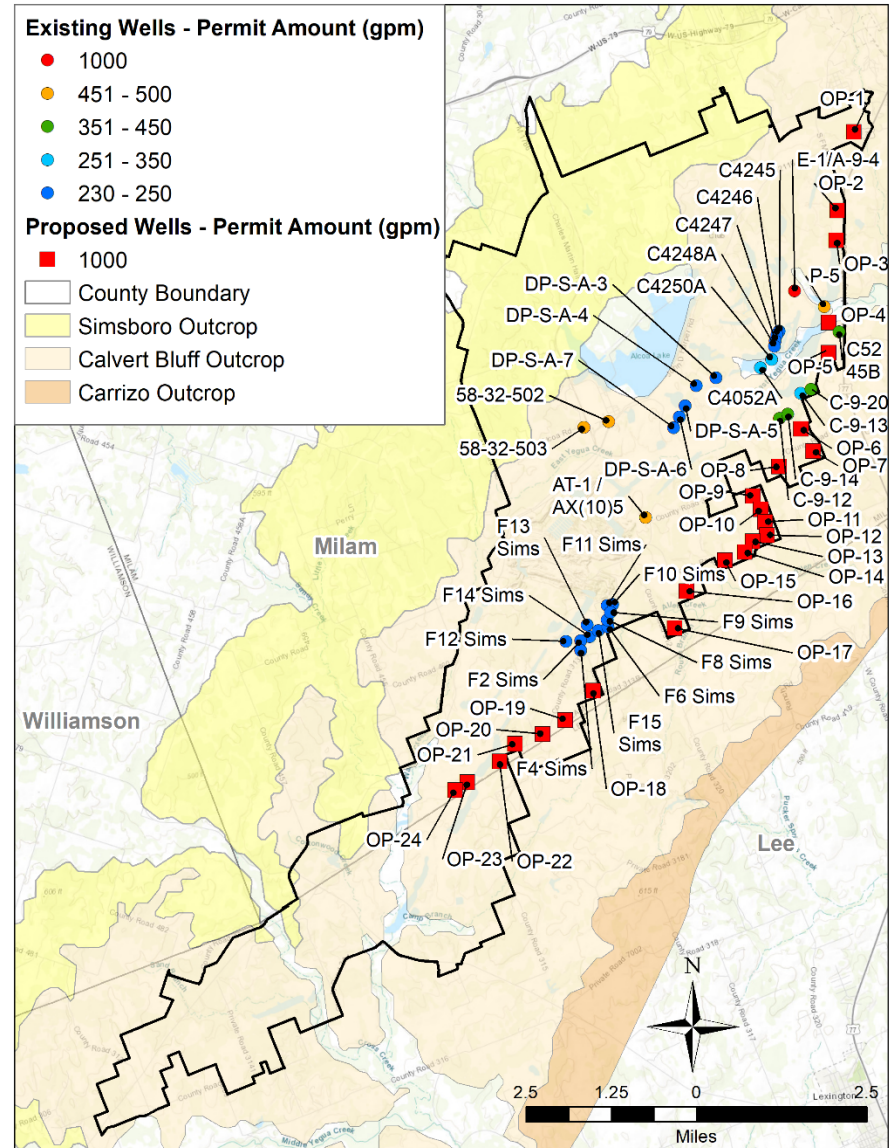
Overview

- Well Field

- 32 wells with Historic Use
- 24 new wells
- Simsboro Wells
- 25,000 acre-ft/yr

- Permit

- Issued November 2012
- Amended September 2021
- Transferred from ALCOA to SLR in December 2021

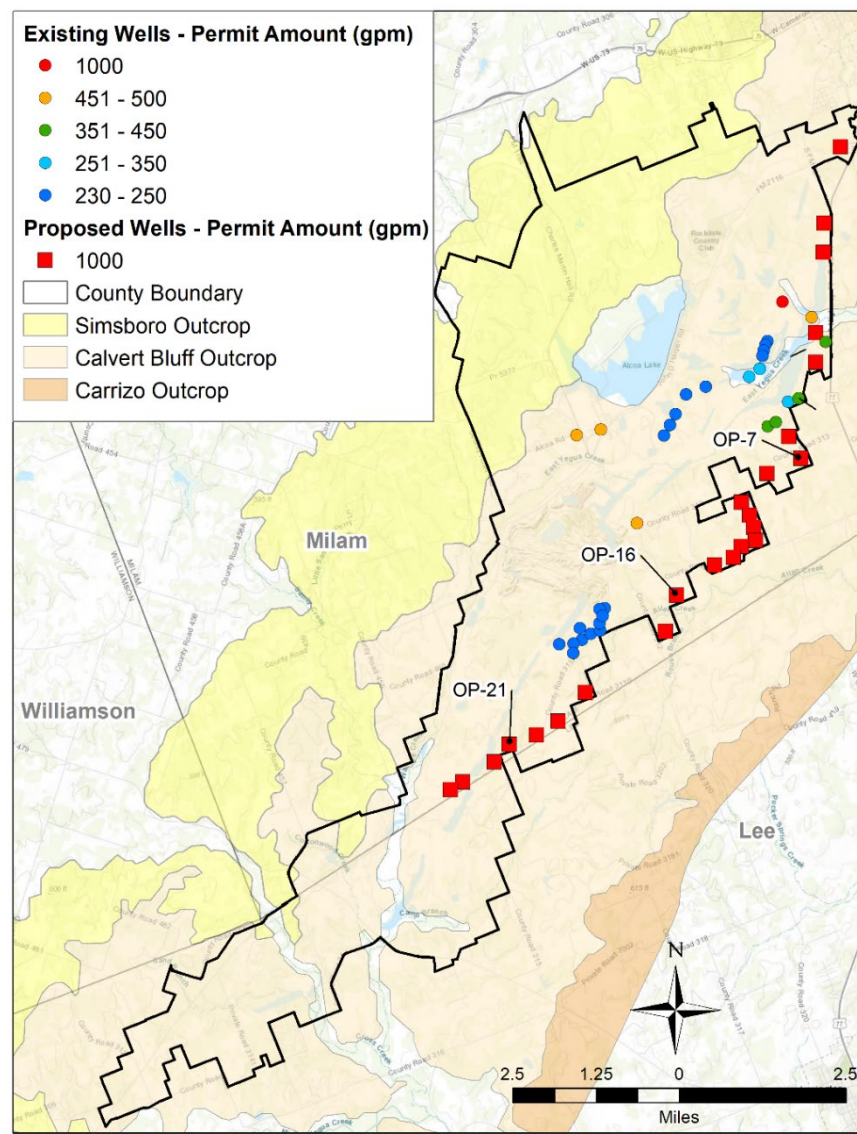


C:\Users\LEBeal\INTERA Inc\Ross Kushnereit - POSGCD, Ross\Alcoa Permits.2021\GIS\makeOutcropFigs_Zoomed_permitAmt_WellLabels_wOPwells.mxd

Aquifer Pumping Test

- Rule 7.15.9
 - Applies to new wells with production > 800 af/yr
 - Met with District to plan a pumping test
 - Aquifer Pumping Test Report due in 60 days
- Schedule
 - OP-21 (completed)
 - OP-16 (completed)
 - OP-7 (planning)
- Benefits
 - Aquifer hydraulic properties
 - Water quality data
 - Use new information for analysis associated with permit renewals

Locations of two completed pumping tests

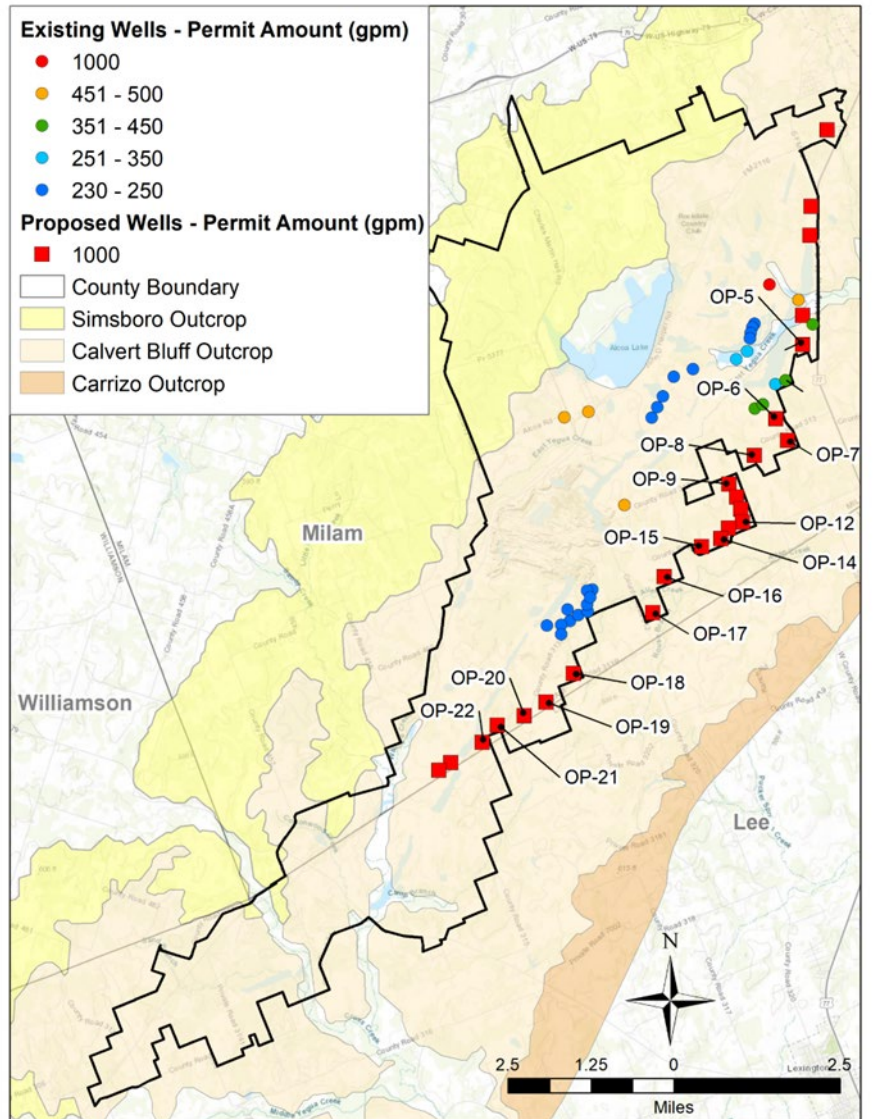


Geophysical Logs

- Potential Value of Geological Logs
 - Tops & Bottoms of Aquifers *
 - Sand Percentages
- Completed Analysis
 - SLR has provided 15 logs from test wells
 - The 15 logs have been combined with other nearby logs to remap the aquifer surfaces
 - Remapping of aquifer surfaces by SLR and POSGCD have been in good agreement thus far
- Benefits
 - Revised surfaces for POSGCD Operational Groundwater model
 - Improved predictions of water level change
 - Enhanced hydrologic data for next GAM update

*** Top and bottom surfaces for Calvert Bluff & Simsboro aquifers in the GAM were demonstrated to need adjustment during the Public Hearing**

Location of 15 geophysical logs



On-going Activities

- **Aquifer Pumping Test**
 - 22 aquifer tests to be completed
 - District reviews and approves a work plan for each aquifer test
 - District will occasionally check on field work and check the aquifer pumping test report
- **Monitoring**
 - SLR is collecting monthly water level data at 21 wells
 - Assembling construction and water level data for the lakes
 - Water quality measurements
- **Analysis**
 - Use geophysical logs to determine tops and bottoms of Hooper Aquifer, as well as Calvert Bluff and Carrizo aquifers
 - Water level and water quality data used to help establish aquifer baseline conditions for future impact studies