



AQUIFER

CONSERVANCY PROGRAM

AQUIFER CONSERVANCY PROGRAM (ACP)

**Update at Milam and Burleson Counties
Groundwater Summit**

**Steven Wise, Chair DFC Committee
Becky Goetsch, Chair, Rules Committee**

August 12, 2021



POSGCD Mission Statement

THE **POST OAK SAVANNAH GROUNDWATER CONSERVATION DISTRICT (POSGCD)** MISSION IS TO ADOPT AND ENFORCE RULES CONSISTENT WITH STATE LAW AND BASED ON BEST AVAILABLE SCIENCE, WHICH PROVIDE FOR THE CONSERVATION, PRESERVATION, PROTECTION, RECHARGING, AND PREVENTION OF WASTE OF GROUNDWATER, WHILE SUPPORTING THE OWNERSHIP OF GROUNDWATER AND THE OWNER'S RIGHT TO ASSIGN OR PRODUCE THAT PROPERTY.

CURRENT POSGCD CONSERVATION PROGRAMS

- GROUNDWATER CONSERVATION GRANTS FOR:

- >LOCAL WATER UTILITIES
 - SINCE 2006- 100+ GRANTS TOTALING \$15.3 M
- >RAINWATER HARVESTING
 - \$75,000 FOR 2021
- >GROUNDWATER WELL ASSISTANCE PROGRAM
 - \$150,000 COMMITTED IN STAND ALONE BUDGET ITEM TO DATE
- >FIRE DEPARTMENTS IN THE DISTRICT
 - \$25,000 PER YEAR
- >PLUGGING ABANDONED WELLS
 - \$25,000 PER YEAR



POSGCD Toolbox for Conservation

- SPACING REQUIREMENTS
- CONTIGUOUS ACREAGE REQUIREMENTS
- MAXIMUM PRODUCTION LIMITS
- ADJUSTABLE PERMIT TERMS (AQUIFERS)
- MONITORING WATER LEVELS
- DESIRED FUTURE CONDITIONS & PROTECTIVE DRAWDOWN LIMITS



ENCOURAGE CONSERVATION- AQUIFER CONSERVANCY PROGRAM



PURPOSE OF PACP:

- 1. ENCOURAGE CONSERVATION**
- 2. REWARD PARTICIPATING
LANDOWNERS**
- 3. ENABLE LANDOWNERS TO
CREATE LEGACY OF
STEWARDSHIP**

Aquifer Conservancy Program



1. INNOVATIVE CONCEPT IN GROUNDWATER CONSERVATION
2. LANDOWNERS WORKING TOGETHER IN PARTNERSHIP WITH EACH OTHER AND THE DISTRICT
3. CONSERVE GROUNDWATER FOR FUTURE GENERATIONS
4. MAKE THIS NEW PROGRAM THE BEST IT CAN BE FOR YOU
5. LANDOWNERS RETAIN OWNERSHIP OF PROPERTY
6. COMPLETELY VOLUNTARY
7. EXEMPT WELLS NOT AFFECTED



BENEFITS

- CONSERVE GROUNDWATER FOR FUTURE GENERATIONS HERE
- FINANCIAL REWARD FOR NOT PRODUCING PERMITTED AMOUNTS OF WATER
- JOIN WITH OTHER LIKE MINDED WATER CONSERVATIONISTS
- EXEMPT WELLS NOT AFFECTED
- REMAIN ELIGIBLE TO PARTICIPATE IN OTHER POSGCD PROGRAMS

RAINWATER HARVESTING

ABANDONED WELL PLUGGING GRANT

WELL ASSISTANCE PROGRAM

- ABILITY FOR LOCAL POPULATION TO AFFECT LONG TERM AVAILABILITY
 - COULD AFFECT AVAILABILITY OF NEEDED CONTIGUOUS ACREAGE FOR PROJECTS
- 



Aquifer Conservancy Program

Public Reviews

COMMISSIONERS COURTS- BOTH MILAM AND BURLESON

TOWN HALL MEETINGS- 3

BOARD MEETINGS- 3

MULTIPLE PUBLIC PRESENTATIONS

MULTIPLE SURVEYS- EMAIL, WEBSITE POP-UP, IN PERSON

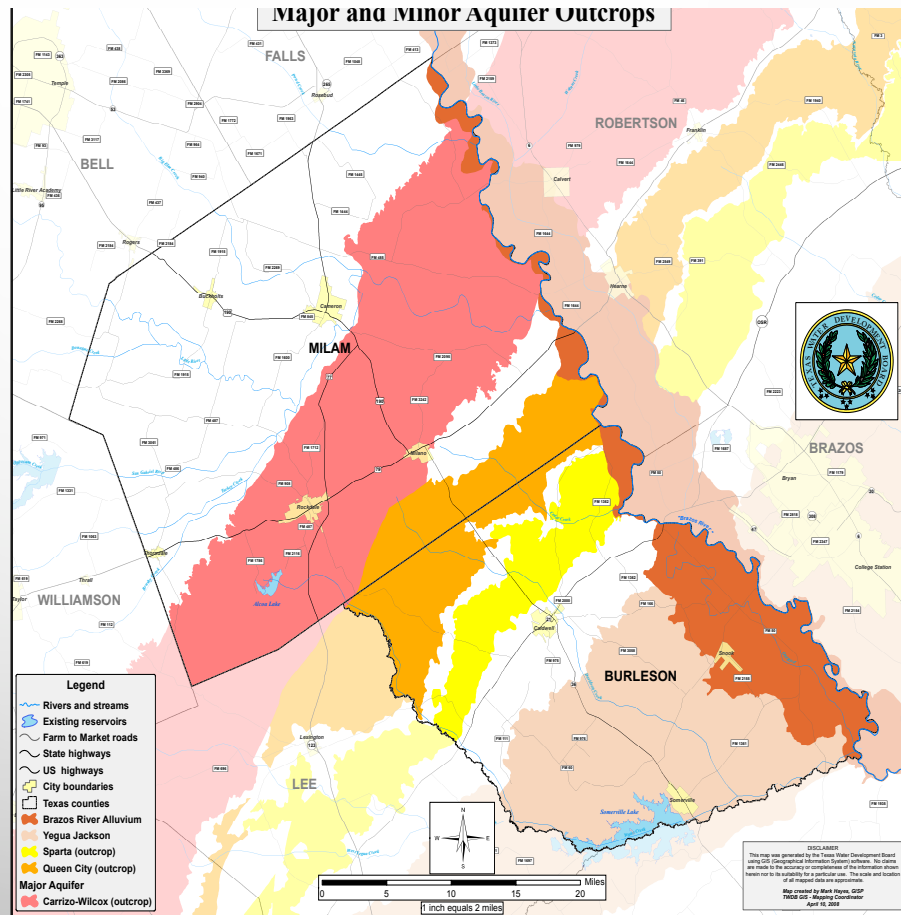
EVOLUTION OF PRESENTATIONS AND INFORMATION

QUESTIONS, COMMENTS, & PARTICIPATION



WHO IS ELIGIBLE?

You must own land above the Carrizo-Wilcox Aquifer

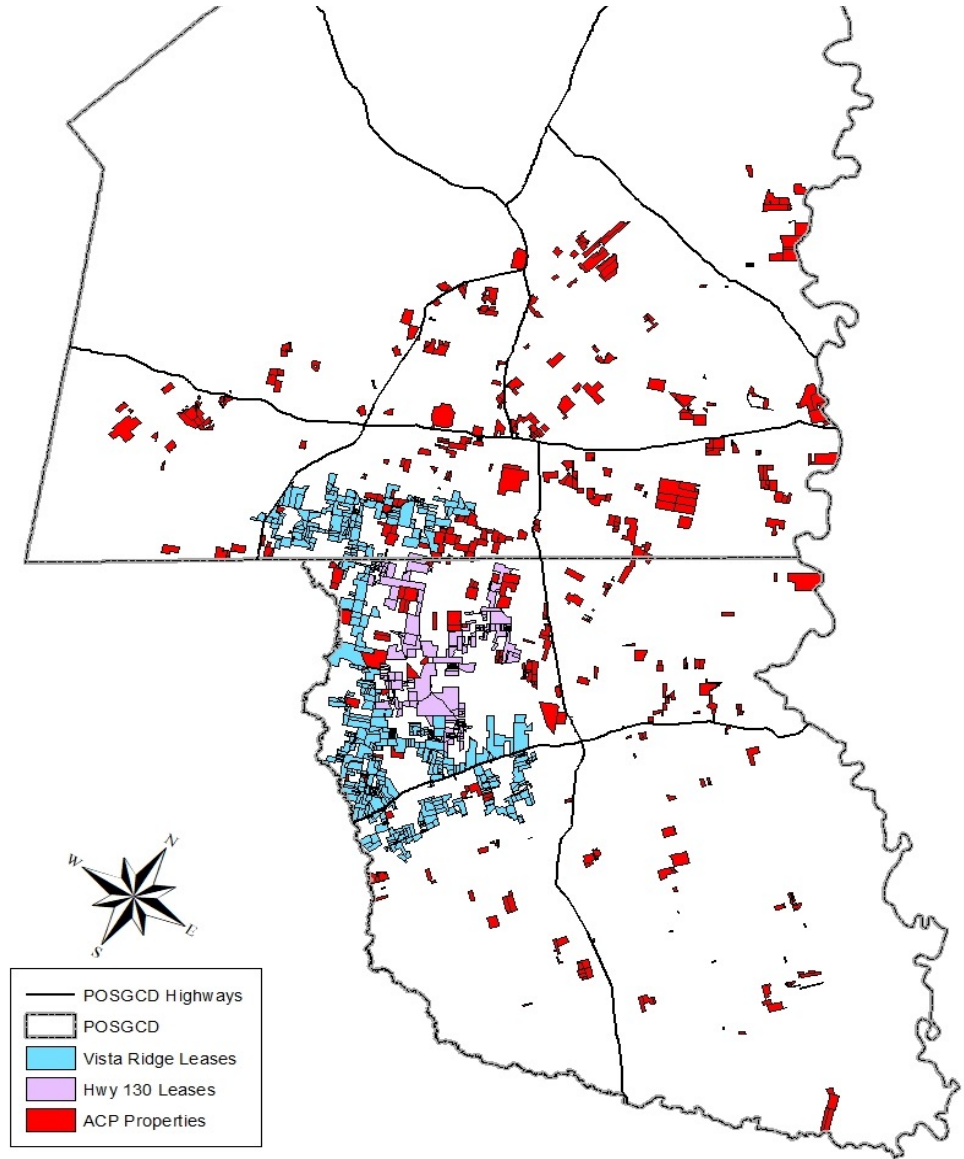




CURRENT COVERAGE OF ACP VS. LEASED PROPERTIES

More than 600
parcels!

Over 45,000
acres!





HOW DOES THIS AFFECT
CURRENTLY ADOPTED DESIRED
FUTURE CONDITIONS (DFCS) &
PROTECTIVE DRAWDOWN LIMITS
(PDLS)?

PACP WAS NOT DESIGNED FOR
THAT PURPOSE.



**WILL THERE BE LESS WATER IN
THE AQUIFERS IN 50 YEARS?**

YES!



IT IS
ESTIMATED
THAT THE
POPULATION
OF TEXAS IS
GROWING BY
MORE THAN
1,000 PER DAY



Will we run out of water?

**PREVIOUS POSGCD WORK HAS
PROVIDED A VERY CONSERVATIVE,
PRO-ACTIVE, & PROTECTIVE
MANAGEMENT APPROACH.**



WILL THIS STOP EXPORT?

**IT WAS NOT DESIGNED TO-
GROUNDWATER IS PRIVATELY OWNED.**

****IT MAY HAVE AN AFFECT ON
OPPORTUNITIES FOR FUTURE LARGE
PROJECTS AND LEAD TO ADJUSTMENTS
TO CURRENT PROJECTS**



HOW WILL PACP CONSERVE WATER?

- WILL REDUCE ELIGIBLE ACREAGE WHICH CAN BE PERMITTED FOR FUTURE PRODUCTION
- PROVIDES ALTERNATIVE TO LEASING
- WORKS IN CONJUNCTION WITH OTHER POSGCD MANAGEMENT STRATEGIES (TOOLS)
- ALL EFFECTS ARE LONG TERM AND BIG PICTURE



HOW WILL THIS BE FUNDED?

**BY COLLECTING FEES ON
PRODUCTION AND TRANSPORT
PERMITTED AMOUNTS**

*****(AGRICULTURE IS EXEMPT FROM PRODUCTION FEES)**



WHY NOT MAX OUT FEES NOW?

**POSGCD CANNOT RAISE FUNDS IN
EXCESS OF APPROVED BUDGET
EXPENSES.**

PACP MUST BE IN THE POSGCD BUDGET



CAN POSGCD SELL WATER?

No!

POSGCD IS A REGULATORY AGENCY OF THE
STATE OF TEXAS

POSGCD NEVER ASSUMES OWNERSHIP OF
YOUR PROPERTY RIGHTS!!



WHAT AM I GIVING UP?

- ABILITY TO PERMIT OR ASSIGN
WATER FOR NON-EXEMPT USES FOR
LENGTH OF TERM

The background of the slide is a light gray gradient. It is decorated with several realistic water droplets of various sizes. In the top-left corner, there is a large droplet and a few smaller ones. In the top-right corner, there is a medium-sized droplet and a small one. In the bottom-right corner, there is a cluster of droplets, including a large one and several smaller ones. In the bottom-center area, there are a few more small droplets.

GUIDELINES AND INFORMATION



A. OPTIONAL TERMS WITH CORRESPONDING ANNUAL PAYMENTS

CHOOSE WHAT FITS YOU BEST!

- 1. FIVE YEARS- \$5/ACRE/YEAR**
- 2. TEN YEARS- \$8/ACRE/YEAR**
- 3. TWENTY YEARS- \$10/ACRE/YEAR**



**B. PACP NEW MEMBER SIGN-UP PERIOD
ANNUALLY (90 DAY PERIOD- JUNE 1- AUG. 31)**

**C. OWNER MUST OWN BOTH SURFACE OF
LAND AND UNENCUMBERED GROUNDWATER
RIGHTS**

**D. NO ASSIGNMENT OR PERMITTED USES OF
THE COMMITTED RESOURCES DURING TERM**



ADDITIONAL KEY POINTS

- AGREEMENT ENDS WITH ANY CHANGE IN PROPERTY OWNERSHIP
- NEW OWNER CAN THEN ENROLL
- ENROLLMENT INCENTIVE OF \$10/ACRE (2021)
- CAN ENROLL PARTIAL PROPERTY (CAN RETAIN SOME ACREAGE FOR NECESSARY PRODUCTION)



POST OAK SAVANNAH
GROUNDWATER
CONSERVATION DISTRICT

AQUIFER CONSERVANCY
PROGRAM
FOR MORE INFO SEE OUR
WEBSITE

WWW.POSGCD.ORG

OR CALL OUR OFFICE
512-455-9900