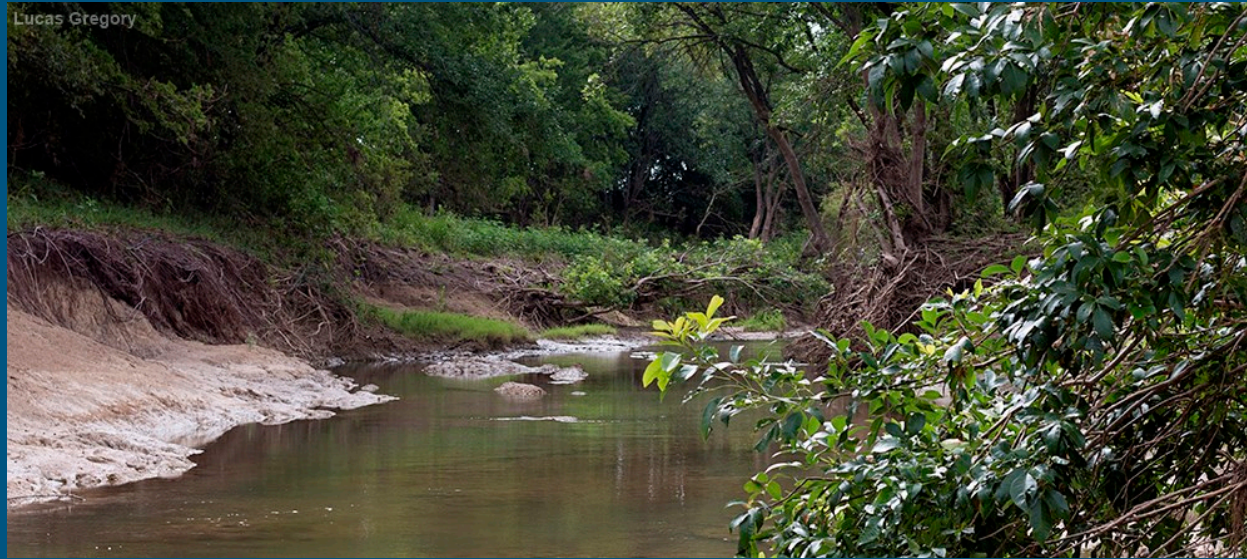


# Implementation of the Big Elm Creek WPP



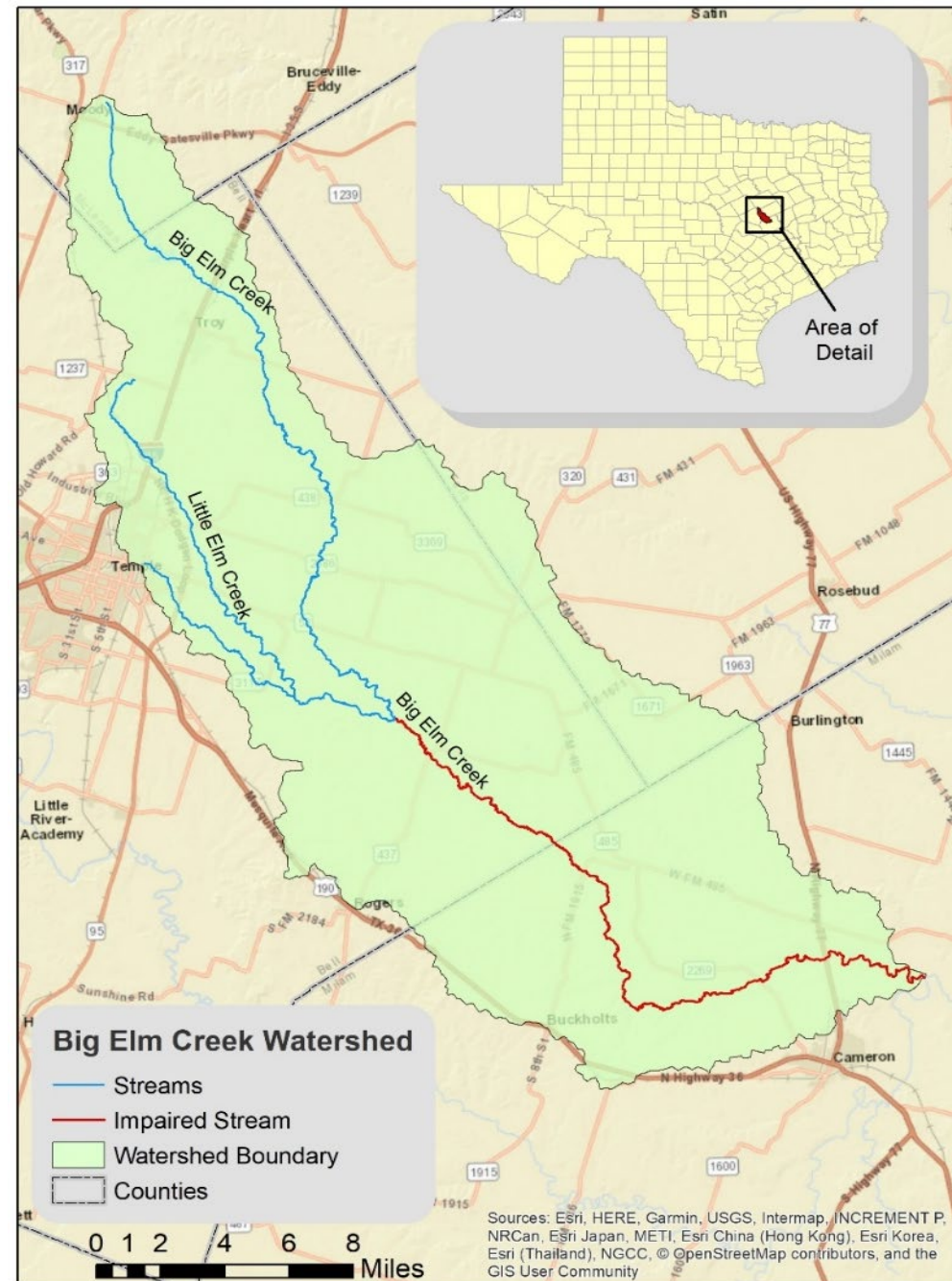
*Ward Ling*  
*Texas Water Resources Institute*

  
Texas Water  
Resources Institute  
*make every drop count*

TEXAS A&M  
**AGRI**LIFE  
RESEARCH | EXTENSION

# What is the issue?

- Bacteria levels over the threshold
- Low levels of dissolved oxygen



# What was the response?

- Develop a watershed protection plan
- A stakeholder driven, voluntary plan to restore water quality
- Developed from input from area residents
- Received EPA acceptance
- Implementation has begun



# The Goal

- ⦿ Restore water quality in Big Elm Creek and its tributaries
- ⦿ Long-term conservation and stewardship
- ⦿ 10-year schedule



# Thanks for coming!

Ward Ling  
Texas Water Resources Institute  
979-255-1819  
ward.ling@ag.tamu.edu



<http://bigelmecreek.twri.tamu.edu/>