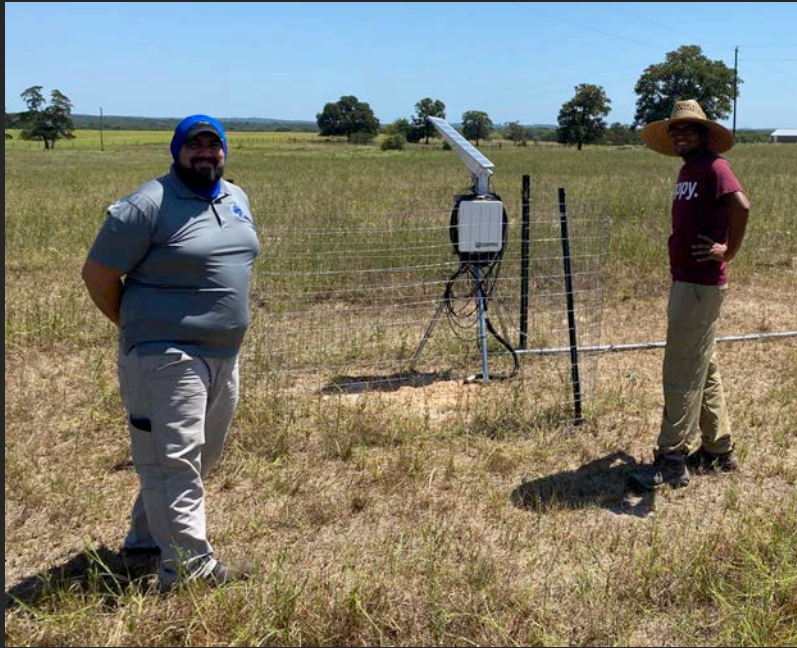
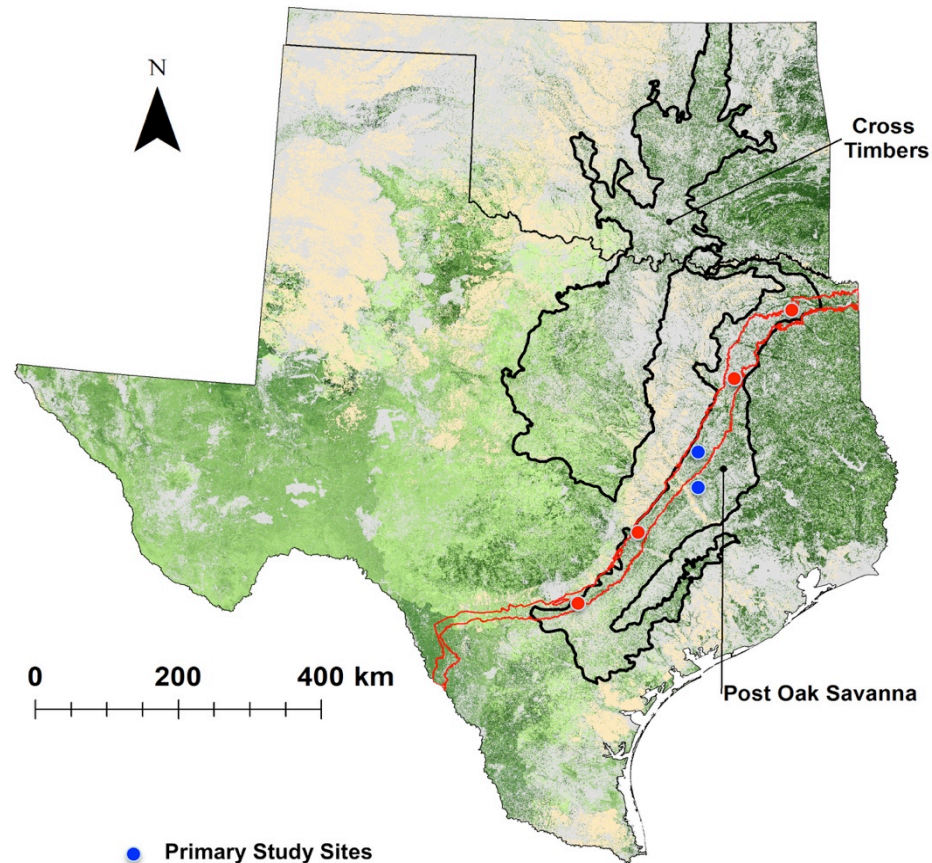




Potential for Increasing Recharge in the Post Oak Savanna Ecoregion

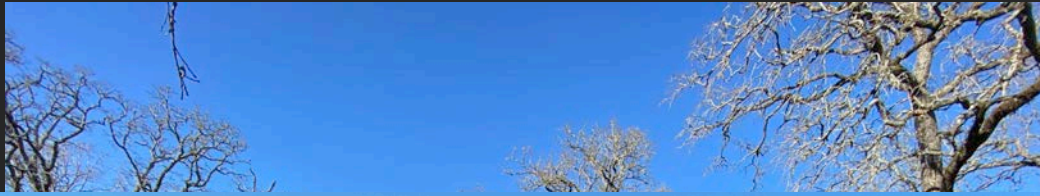
Bradford Wilcox and Shishir Basant
Department of Ecology and Conservation Biology
Texas A&M University





- Primary Study Sites
- Auxiliary Study Sites
- Carrizo-Wilcox Recharge Zone
- Other
- Agriculture
- Woody Cover 10 - 19%
- Woody Cover 20 - 29%
- Woody Cover 30 - 39%
- Woody Cover 40 - 49%
- Woody Cover 50 - 59%
- Woody Cover 60 - 69%
- Woody Cover 70 - 79%
- Woody Cover 80 - 89%
- Woody Cover 90 - 100%

Rapidly changing land cover



What does this mean in terms of recharge?

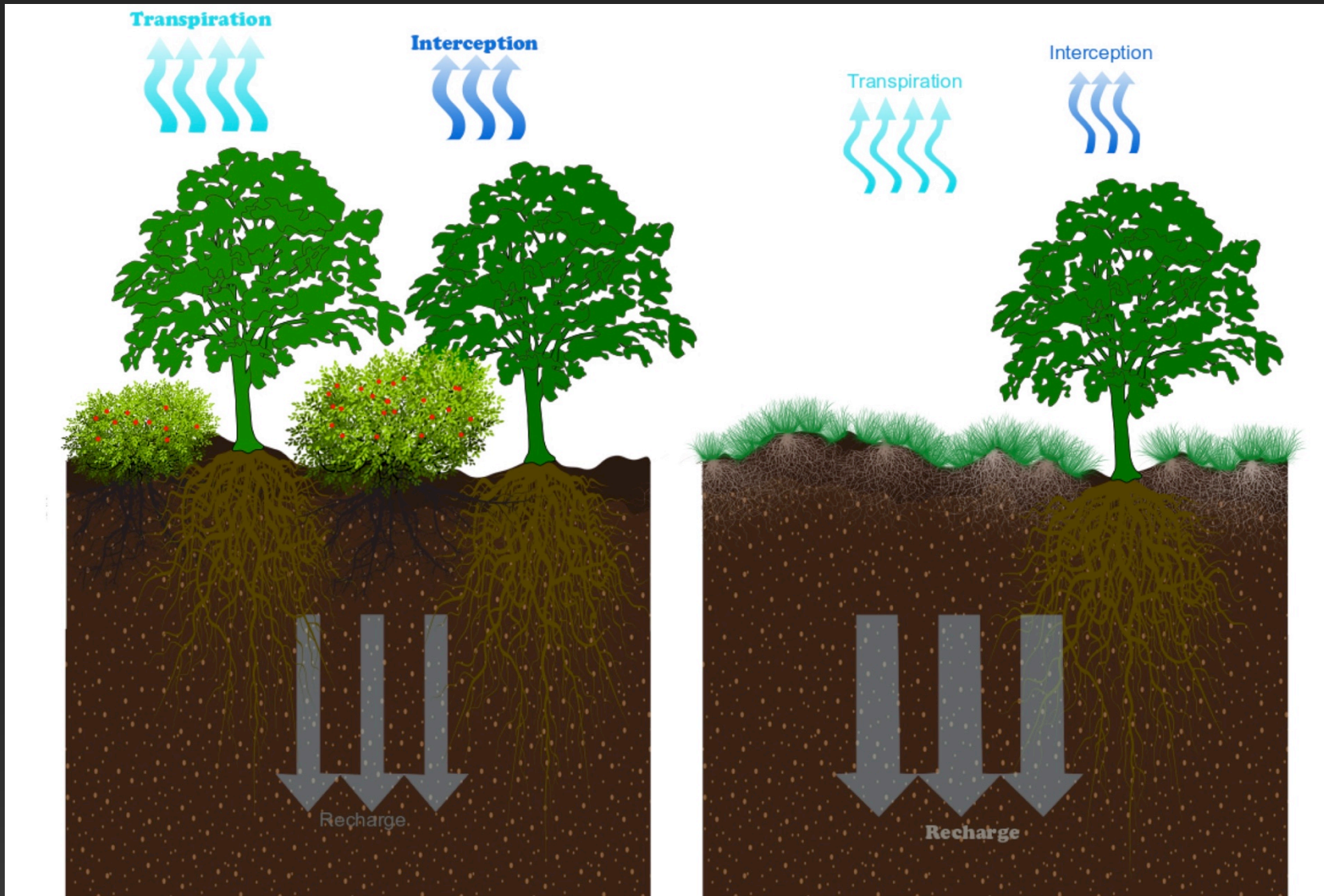




Figure 4. Locations of soil water monitoring. Plots A-G; A – Woodland Site-1, B – Pasture Site-1, C – Woodland Site2, D – Pasture Site-2, E – Pasture Site (Independent), F – Woodland Site-4, G – Pasture Site-4

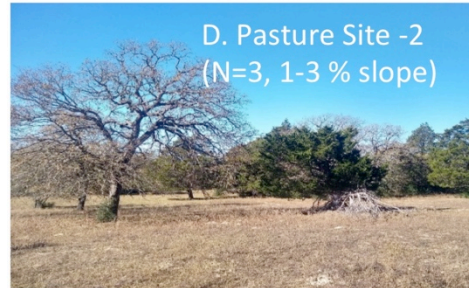


Figure 5. Vegetation and cover conditions for the different monitoring sites.

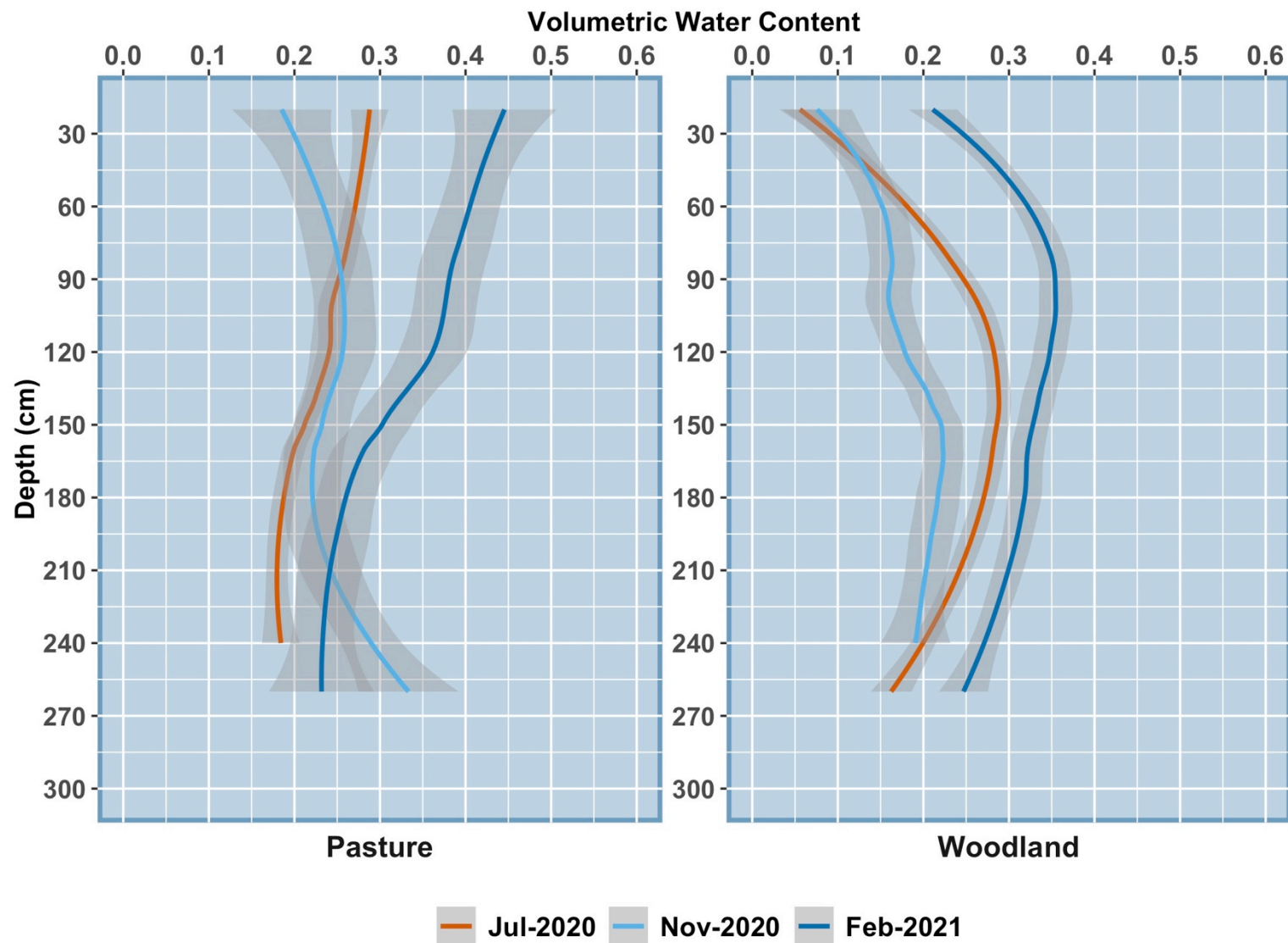


Figure 7. Soil water profiles for a pasture and a wooded areas for a 10 month period. These profiles are based on data from 6 open and 6 wooded locations). The gray bands are the standard error.

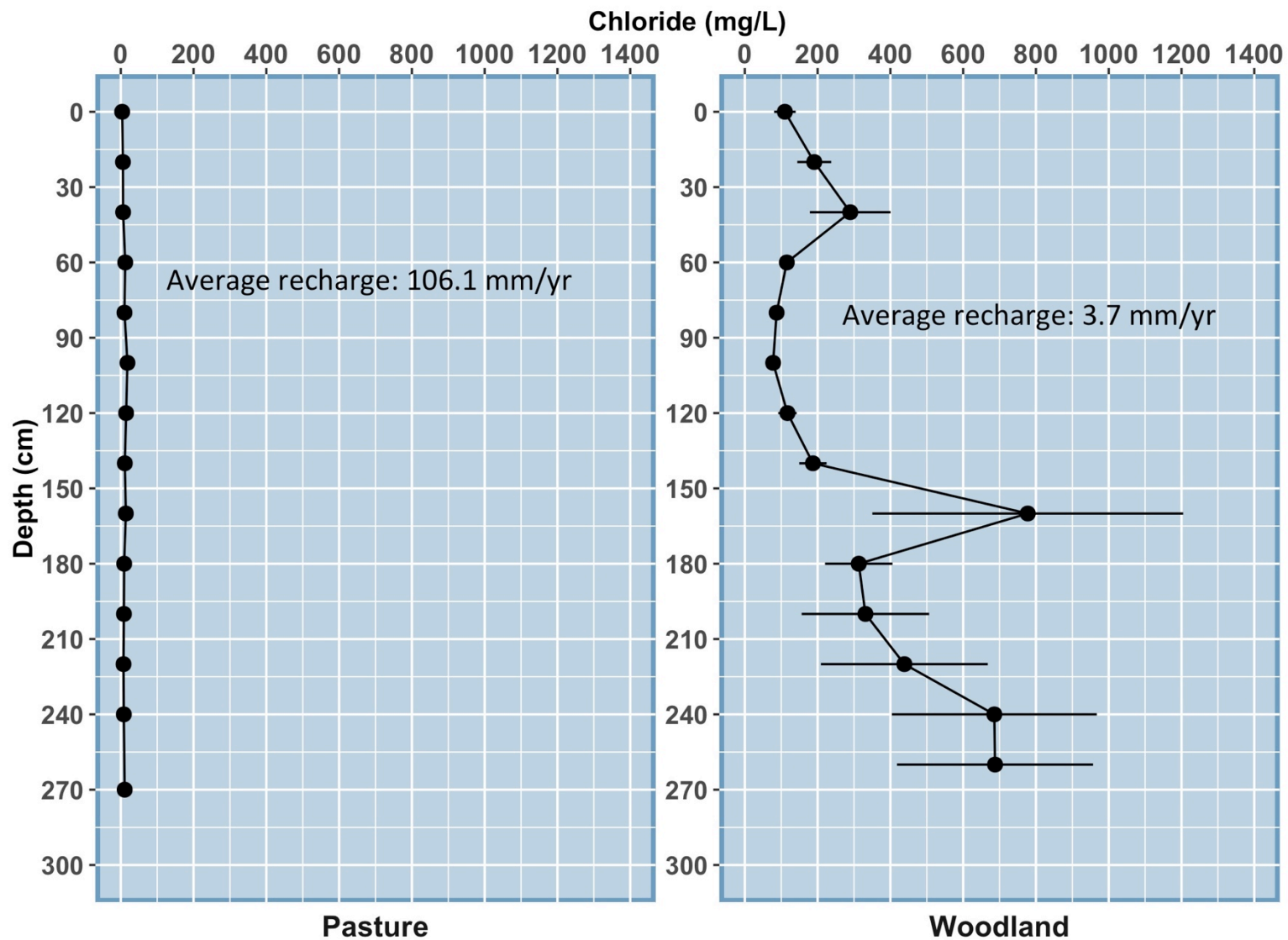
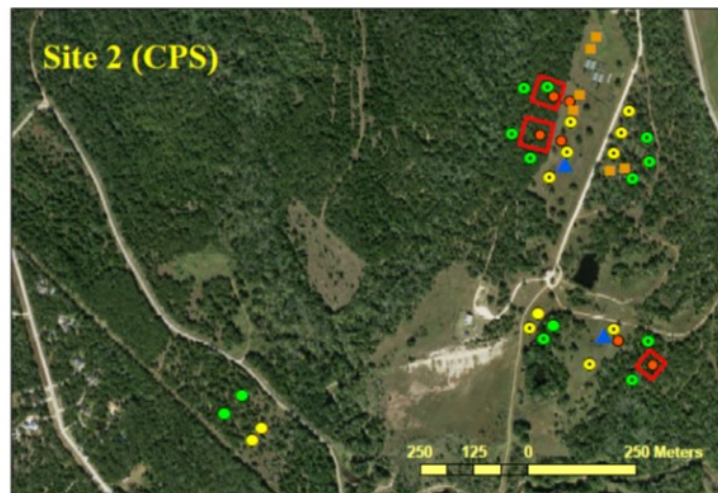
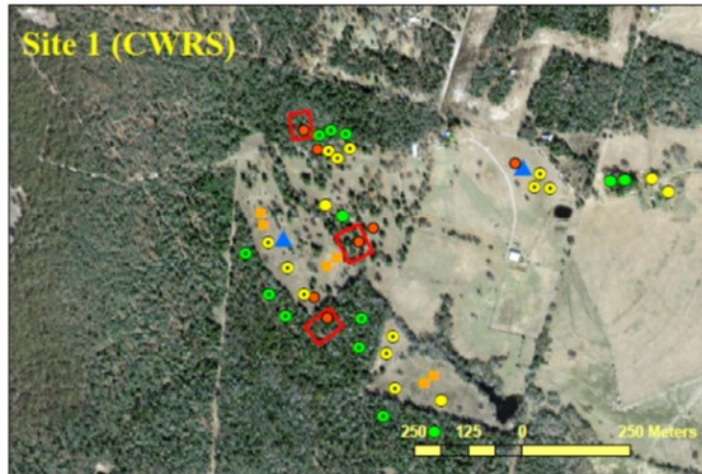


Figure 9. Chloride profiles for pastures and woodlands in the CWRS site. Error bars represent the standard error

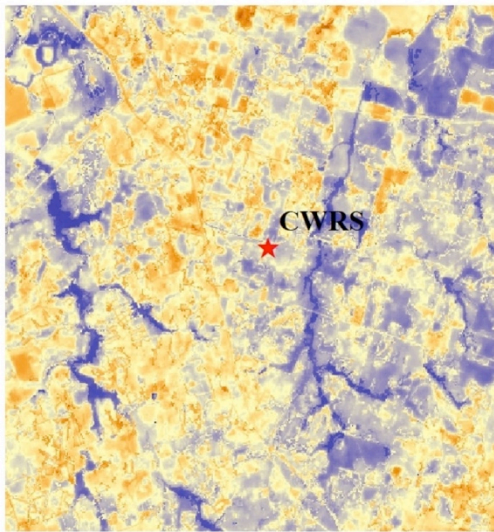
Future Research



- | | | |
|---|----------------|----------------------------------|
| ● Cl-measurements (Open and Wooded) | ■ Runoff plots | □ Sapflux and Interception plots |
| ● Neutron probe and Cl-measurements (Open and Wooded) | ● Soil sensors | ▲ Micromet station |

Future Research

July 26, 2014



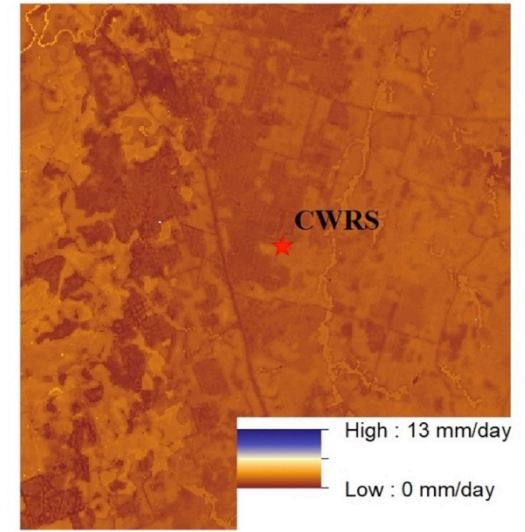
Monthly Precipitation: 142.7 mm
Temperature: 23 C
Daily Humidity: 72%
Wind Speed: 24 kph

July 24, 2019



Monthly Precipitation: 43.9 mm
Temperature: 26 C
Daily Humidity: 45%
Wind Speed: 21 kph

Jan 4, 2019



Monthly Precipitation: 243.84 mm
Temperature: 6 C
Daily Humidity: 82%
Wind Speed: 19 kph

6 3 0 6 Kilometers

Future Research

