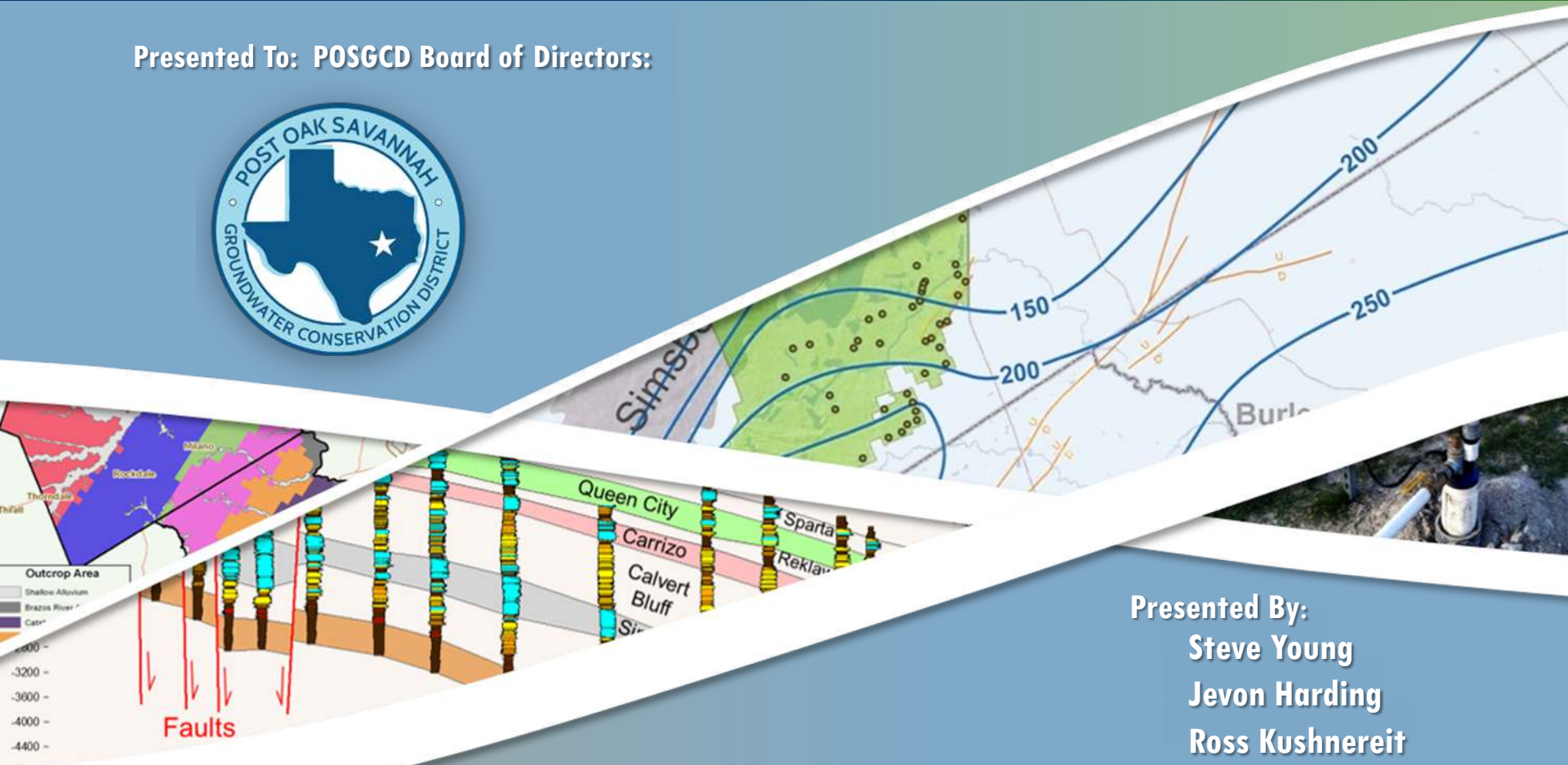


# Update on Compliance with Desired Future Conditions (DFCs) and Protective Drawdown Limits (PDLs)

Presented To: POSGCD Board of Directors:



Presented By:  
Steve Young  
Jevon Harding  
Ross Kushnereit



October 13, 2020

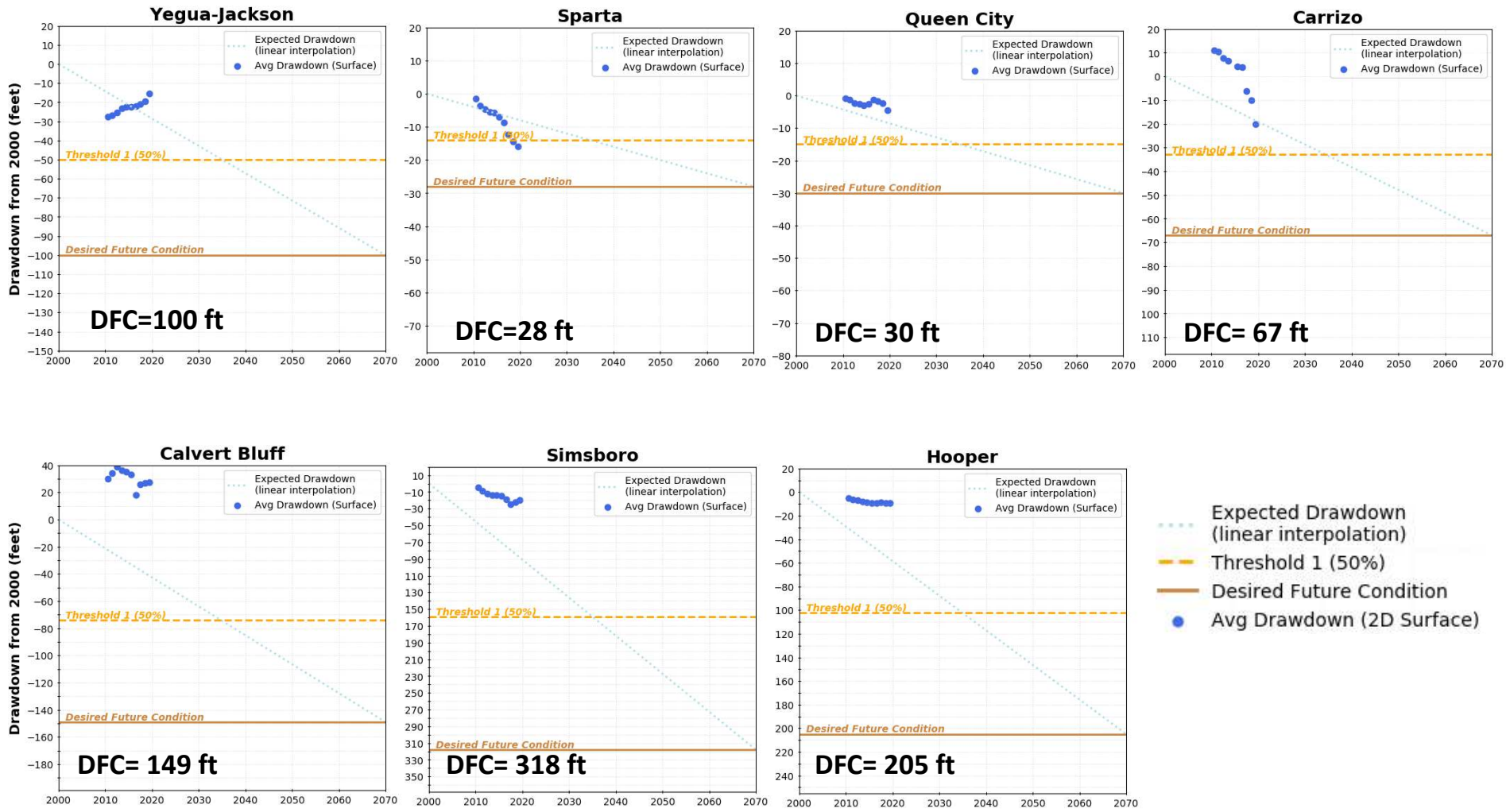
# Compliance with POSGCD DFCs based on Monitored Water Levels

Management Zone	DFC	2010	2011	2012	2013	2014	2015	2016	2017	2018	2019	% of DFC
Yegua Jackson	100	27.5	26.8	25.4	23.0	22.3	22.3	22.2	21.0	19.6	15.6	(16%)
Sparta	28	1.4	3.6	4.6	5.4	5.6	7.0	8.6	12.3	14.5	15.9	(57%)
Queen City	30	0.9	1.4	2.4	2.7	2.9	2.6	1.3	1.6	2.4	4.6	(15%)
Carrizo	67	-11.1	-10.4	-7.9	-6.6	-5.1	-4.3	-3.8	6.1	9.9	20.0	(30%)
Calvert Bluff (Upper Wilcox)	149	-29.9	-34.2	-39.0	-36.4	-35.4	-33.3	-18.0	-25.8	-27.0	-27.2	(-18%)
Simsboro (Middle Wilcox)	318	5.0	8.9	12.2	13.7	13.8	14.9	19.0	24.7	22.5	19.5	(6%)
Hooper (Lower Wilcox)	205	5.4	6.2	6.9	7.9	8.7	9.5	9.5	8.9	9.2	9.2	(4%)

Threshold 1 = 50% of DFC  
 Threshold 2 = 60% of DFC  
 Threshold 3 = 75% of DFC

7.7 Largest Drawdown  
 (bold print)

# Compliance with POSGCD DFCs



# Compliance with POSGCD PDLs Based on Monitored Water Levels

Shallow Management Zone	PDL	2001	2002	2003	2004	2005	2006	2007	2008	2009	2010	2011	2012	2013	2014	2015	2016	2017	2018	2019	% of PDL
Yegua Jackson	20	0.0	-2.7	-3.3	-3.6	-3.6	-3.0	-2.3	0.1	1.2	4.3	4.3 (4.3)	4.5 (4.4)	4.6 (4.6)	4.7 (4.6)	4.9 (4.9)	4.6 (4.5)	3.4 (3.4)	4.4 (4.4)	5.3 (5.5)	(27%)
Sparta	20	0.2	-0.2	-0.6	-0.9	-0.9	-0.8	-0.7	0.0	0.4	2.1	3.2 (3.3)	3.7 (3.8)	4.1 (4.1)	4.2 (4.3)	4.1 (4.3)	2.9 (3.1)	1.9 (2)	3.1 (3.4)	5 (5.5)	(25%)
Queen City	20	0.5	0.4	-0.2	-0.7	-0.4	0.4	0.4	0.8	0.9	2.0	2.9 (2.7)	3.8 (3.6)	4.6 (4.3)	4.7 (4.5)	4.2 (4)	2.5 (2.3)	1.1 (0.9)	0.6 (0.4)	1.6 (1.4)	(8%)
Carrizo	20	0.9	0.9	0.1	-0.4	0.2	1.6	1.8	2.1	2.1	3.0	4.2 (4.3)	5.2 (5.3)	6.4 (6.5)	6.7 (6.8)	6.2 (6.2)	4.6 (4.5)	3 (2.9)	1.7 (1.4)	1.7 (1.2)	(9%)
Calvert Bluff (Upper Wilcox)	20	1.4	1.8	1.7	1.8	2.6	4.1	4.4	4.6	4.2	4.8	5.7 (5.7)	6.6 (6.6)	7.7 (7.8)	8 (8)	7.7 (7.7)	6.6 (6.7)	5.4 (5.6)	3.7 (3.8)	3 (3)	(15%)
Simsboro (Middle Wilcox)	20	1.3	2.1	3.3	4.2	4.7	5.7	5.9	6.3	5.8	6.5	6.9 (7.1)	7.6 (7.8)	8.2 (8.3)	8.3 (8.4)	7.9 (8.1)	7.2 (7.4)	6.5 (6.8)	3.9 (3.8)	2.8 (2.7)	(14%)
Hooper (Lower Wilcox)	20	0.6	0.9	2.8	3.7	3.7	4.0	4.3	5.3	5.6	7.2	7.6 (7.9)	8.4 (8.6)	8.4 (8.6)	8.7 (8.8)	8.5 (8.7)	8.2 (8.4)	8.1 (8.3)	4.7 (5)	4.1 (4.3)	(21%)

## Rule 16.4 Thresholds

- Threshold 1 = 10 ft
- Threshold 2 = 12 ft
- Threshold 3 = 15 ft

## Method

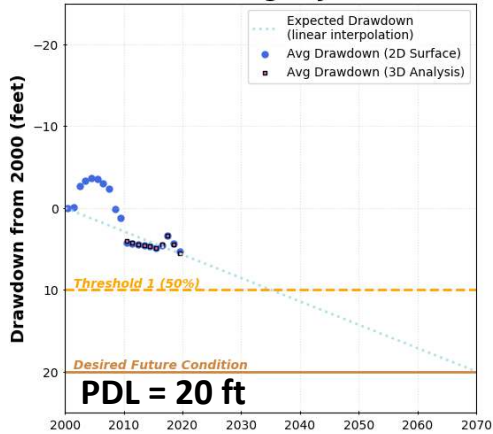
- 2D calculation
- (3D calculation)

7.7

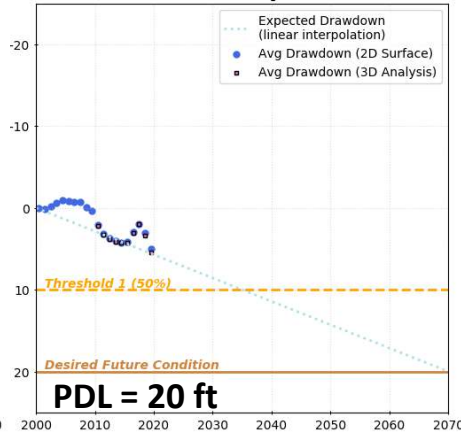
Largest Drawdown

# Compliance with POSGCD Shallow PDLs

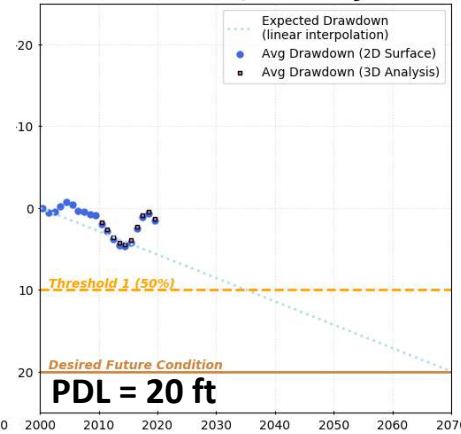
### Shallow Yegua-Jackson



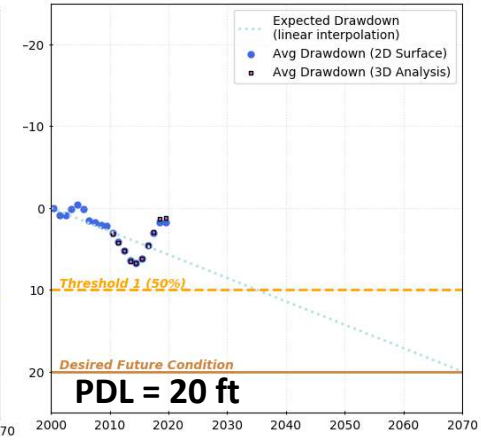
### Shallow Sparta



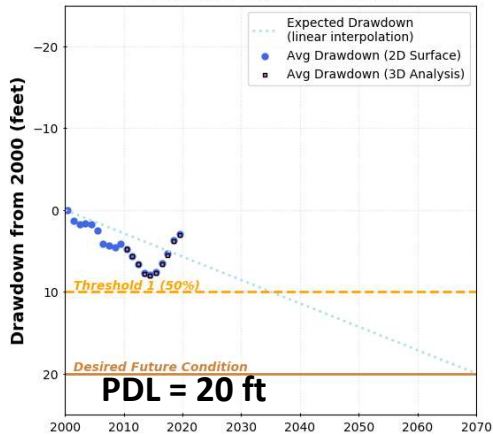
### Shallow Queen City



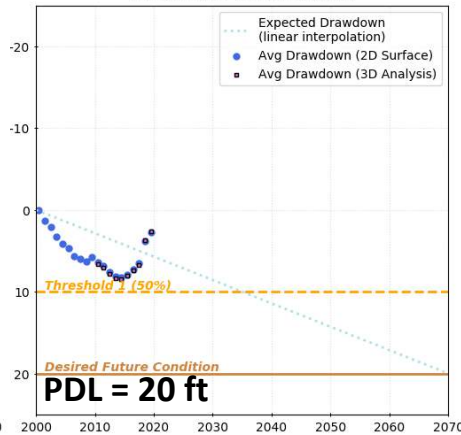
### Shallow Carrizo



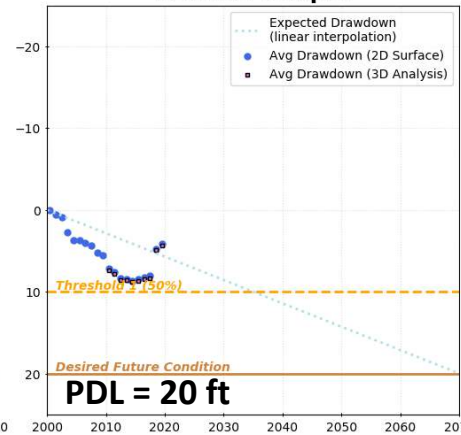
### Shallow Calvert Bluff



### Shallow Simsboro



### Shallow Hooper

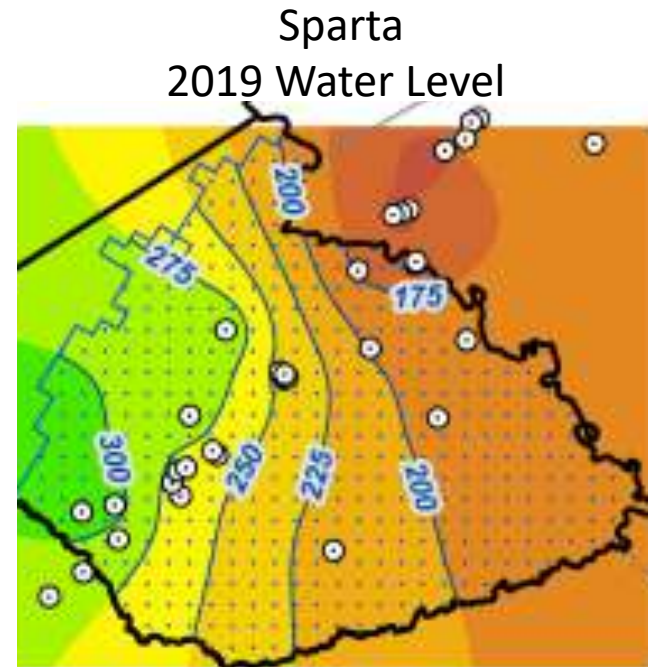


- Expected Drawdown (linear interpolation)
- Threshold 1 (50%)
- Desired Future Condition
- Avg Drawdown (2D Surface)



# Summary

- Desired Future Conditions
  - Sparta exceeds Threshold 1 at 57%,
  - Sparta has steady drawdown increase since 2010 (1.5 ft/yr)
  - Carrizo has steady drawdown increase since 2010 (2.3 ft/yr) is at 30%
- Protective Drawdown Limits
  - Yegua Jackson is at 27%
  - Sparta is at 25%



A scenic landscape featuring a large, dense green tree on the left side of the frame. In the foreground, a wooden dock extends into a calm body of water. The background shows a line of trees and a sky filled with soft, white clouds. The overall atmosphere is peaceful and natural.

Questions ?