



# MONITORING NETWORK UPDATE

POSGCD BOARD MEETING

AUGUST 11, 2020



# QUESTION #1

**HOW IS THE DISTRICT MONITORING VISTA RIDGE PRODUCTION?**



- District Rules require Permit holders to report Production on a Monthly basis
- The Board has required water level data and pumping rates from Vista Ridge wells as a condition of Permit Amendment and per updated Rules. EPCOR is working with District staff and consultants to deliver this data.
- District staff, per District Management Plan established by the Board, continues to build an extensive Monitoring Network with wells in each produced formation.
- District Staff continues to coordinate with neighboring GCDs to share monitoring information





# Post Oak Savannah GCD

Secure Map

Home Help

Layers

Legend

## Monitoring Wells (by Aquifer)

- Brazos River Alluvium
- Calvert Bluff
- Carrizo
- Hooper
- No Assignment
- Queen City
- Reklaw
- Simsboro
- Sparta
- Yegua - Jackson

Bookmarks

Identify

Find

Draw

Measurement

Print

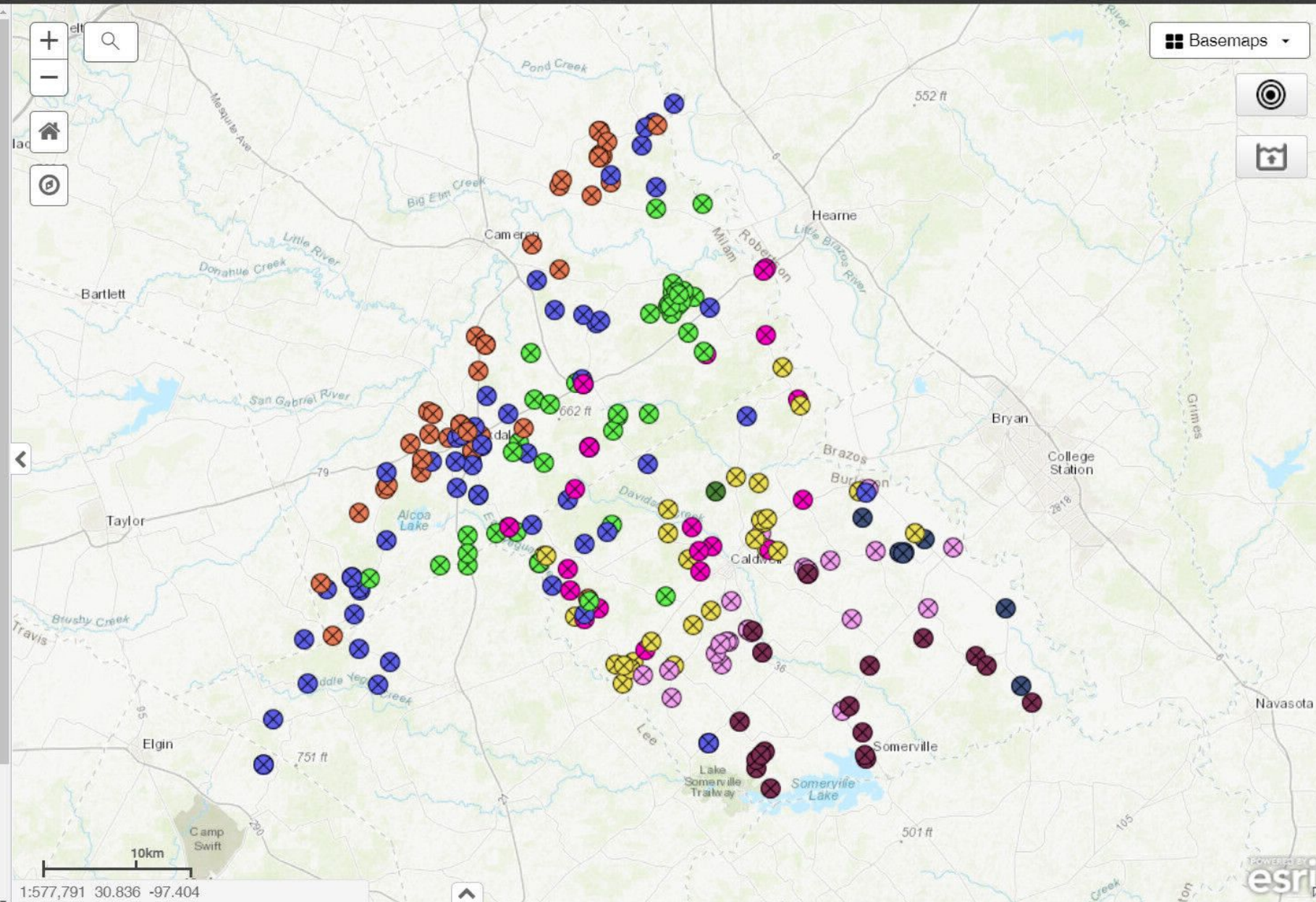
Directions

Google Street View

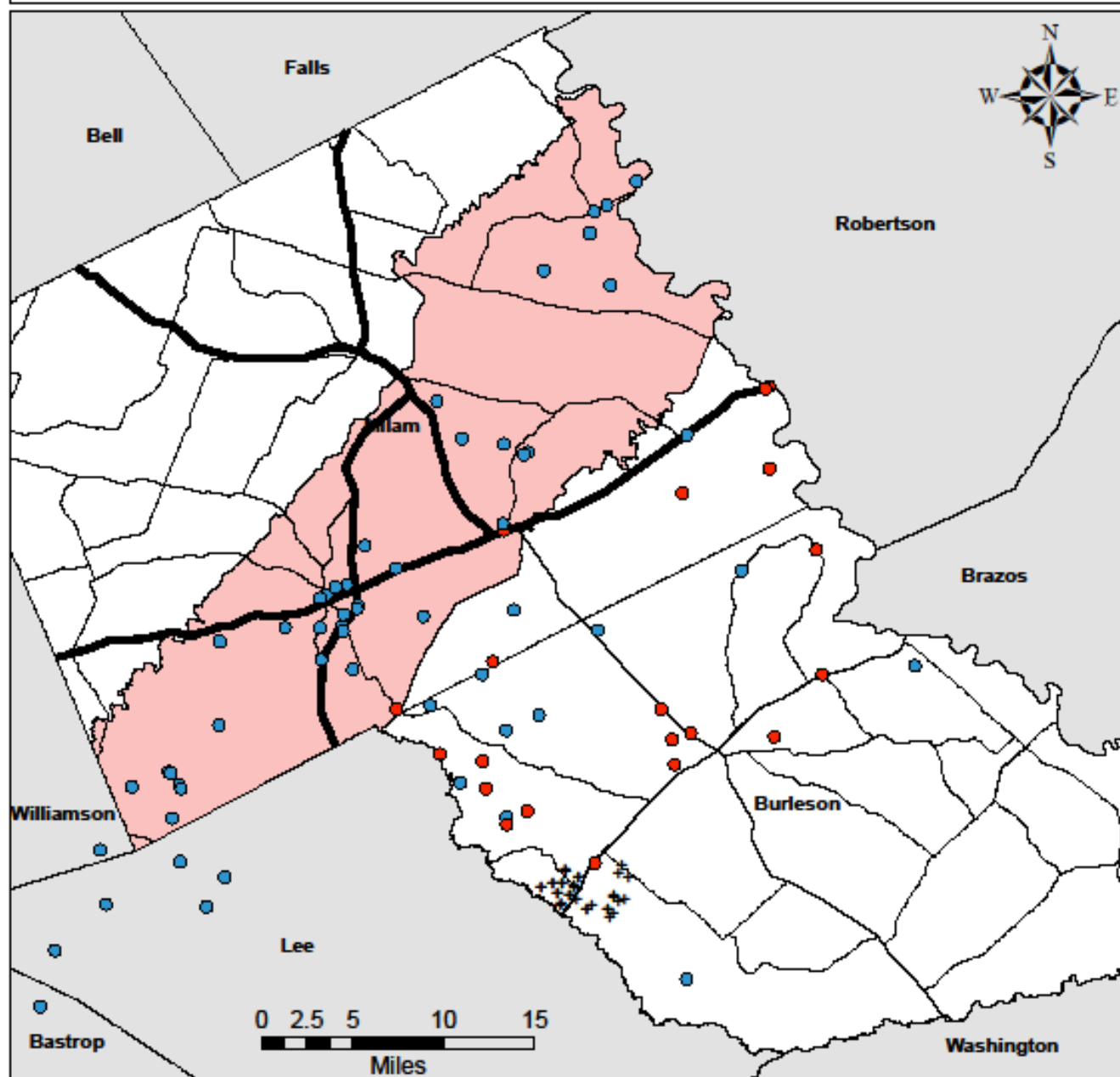
Open External Map

Radius Rings

Basemaps



## District Monitoring Wells in Relation to Vista Ridge



This map illustrates the wells in the District's Monitoring Network that are identified to be in the shallow management zone set for 400 feet. The District makes an effort to make management decisions that are supported through best available science. In an effort to improve this science, more wells are needed to increase the quantity and quality of data. While the Carrizo-Wilcox has been prioritized, there is a strong need for some shift towards the minor aquifers in regards to number of shallow monitoring wells. This document is for DRAFT ONLY.

### Legend

+ Vista Ridge Well Field

### Monitor Wells - Aquifer

● Simsboro

● Carrizo

### Roads

— US

— SH

— FS

— FM

■ Carrizo-Wilcox Outcrop





# QUESTION #2

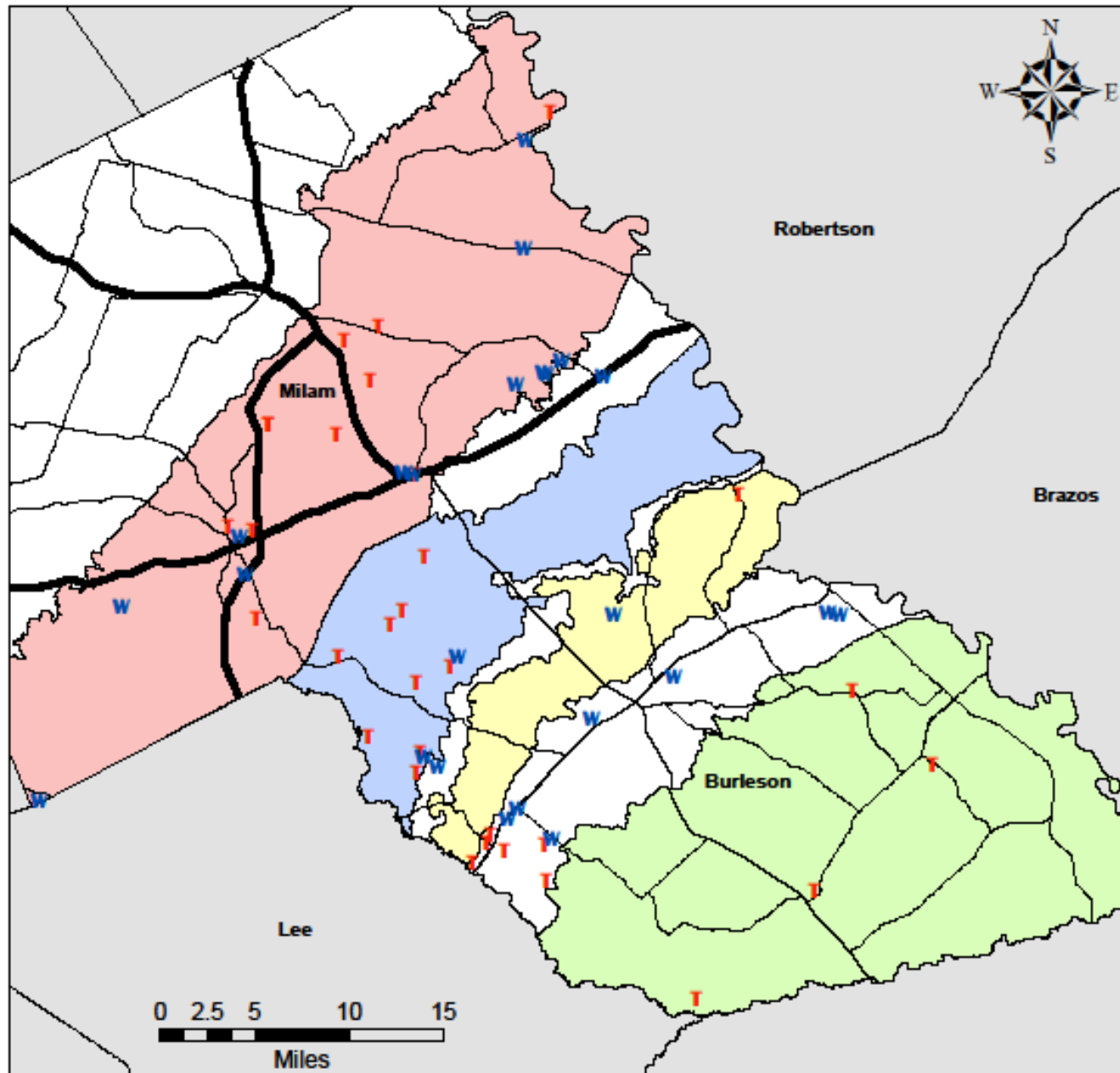
**HOW IS THE DISTRICT IMPROVING THE MONITORING NETWORK?**



- Current monitor well count is 248, which 237 of those are considered “Active”
- Of these Active wells, 55 are instrumented for continuous measurements
- QA/QC work, with INTERA, cleaned up the well count.
- Continuous Measurements will be averaged weekly and uploaded to the District database on a weekly basis.
- Field (Campaign) Measurements will be entered when collected.



## District Monitoring Wells - Instrumented Wells



This map illustrates the wells in the District's Monitoring Network that are instrumented with equipment for continuous measurements.

The District makes an effort to make management decisions that are supported through best available science. In an effort to improve this science, more wells are needed to increase the quantity and quality of data. While the Carrizo-Wilcox has been prioritized, there is a strong need for some shift towards the minor aquifers in regards to number of shallow monitoring wells. This document is for DRAFT ONLY.

### Legend

W WellIntel

T Transducers

### Roads

— US

— SH

— FS

— FM

Carrizo-Wilcox Outcrop

Queen City Outcrop

Sparta Outcrop

Yegua-Jackson Outcrop





# WE KNOW VISTA RIDGE HAS BEEN PUMPING SINCE APRIL, WHAT IMPACTS HAVE OCCURRED, IF ANY?

Staff and Consultants will provide specific discussion on this topic in September. However, initial results indicate that impacts are less than previously discussed and expected.

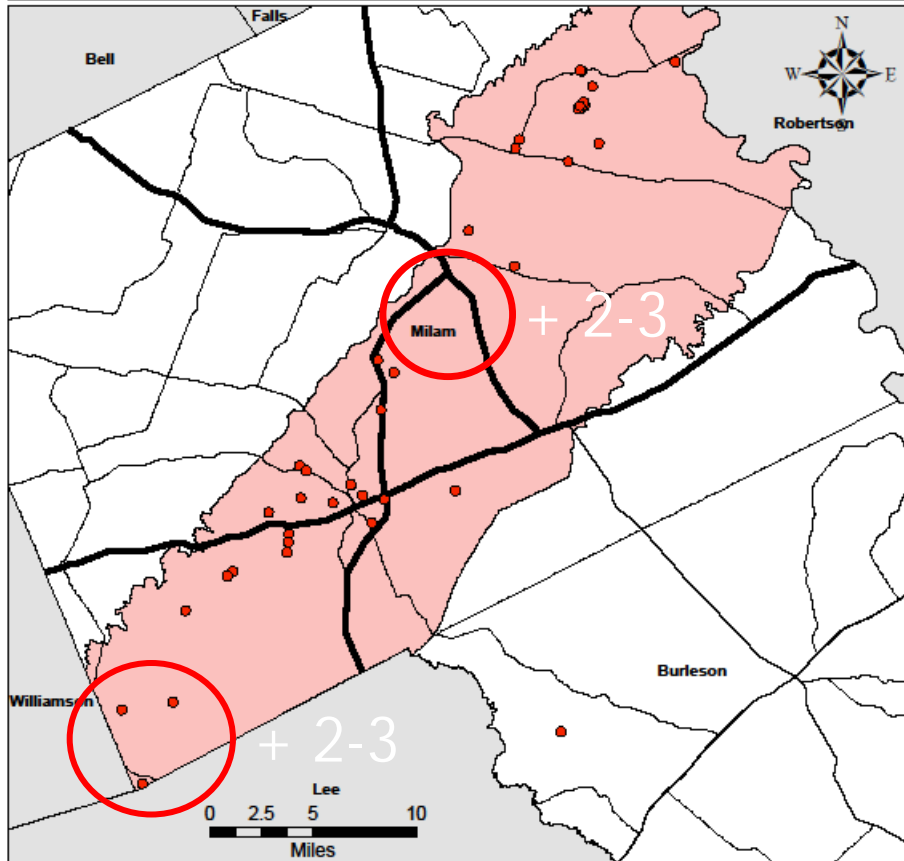


# QUESTION #3

**WHERE ARE NEW WELLS NEEDED?**



## District Monitoring Wells - Hooper



This map illustrates the wells in the District's Monitoring Network that are identified to be in the shallow management zone set for 400 feet. The District makes an effort to make management decisions that are supported through best available science. In an effort to improve this science, more wells are needed to increase the quantity and quality of data. While the Carrizo-Wilcox has been prioritized, there is a strong need for some shift towards the minor aquifers in regards to number of shallow monitoring wells. This document is for DRAFT ONLY.

### Legend

#### Monitor Wells - Aquifer

■ Hooper

#### Roads

— US

— SH

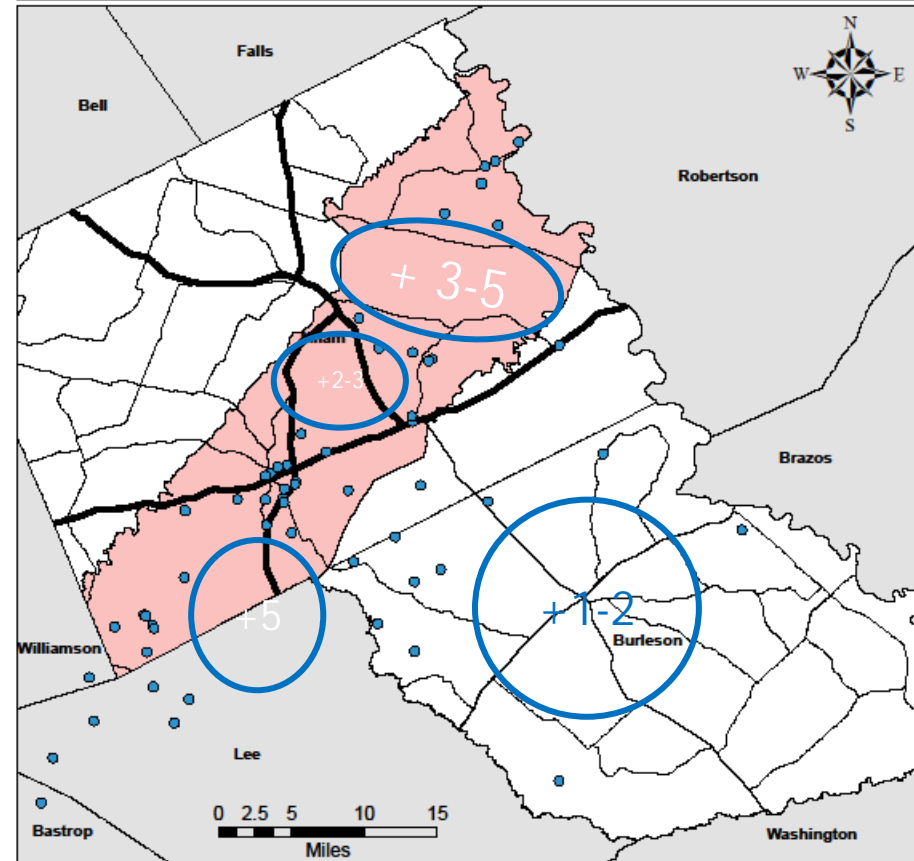
— FS

— FM

■ Carrizo-Wilcox Outcrop



## District Monitoring Wells - Simsboro



This map illustrates the wells in the District's Monitoring Network that are identified to be in the shallow management zone set for 400 feet. The District makes an effort to make management decisions that are supported through best available science. In an effort to improve this science, more wells are needed to increase the quantity and quality of data. While the Carrizo-Wilcox has been prioritized, there is a strong need for some shift towards the minor aquifers in regards to number of shallow monitoring wells. This document is for DRAFT ONLY.

### Legend

#### Monitor Wells - Aquifer

■ Simsboro

#### Roads

— US

— SH

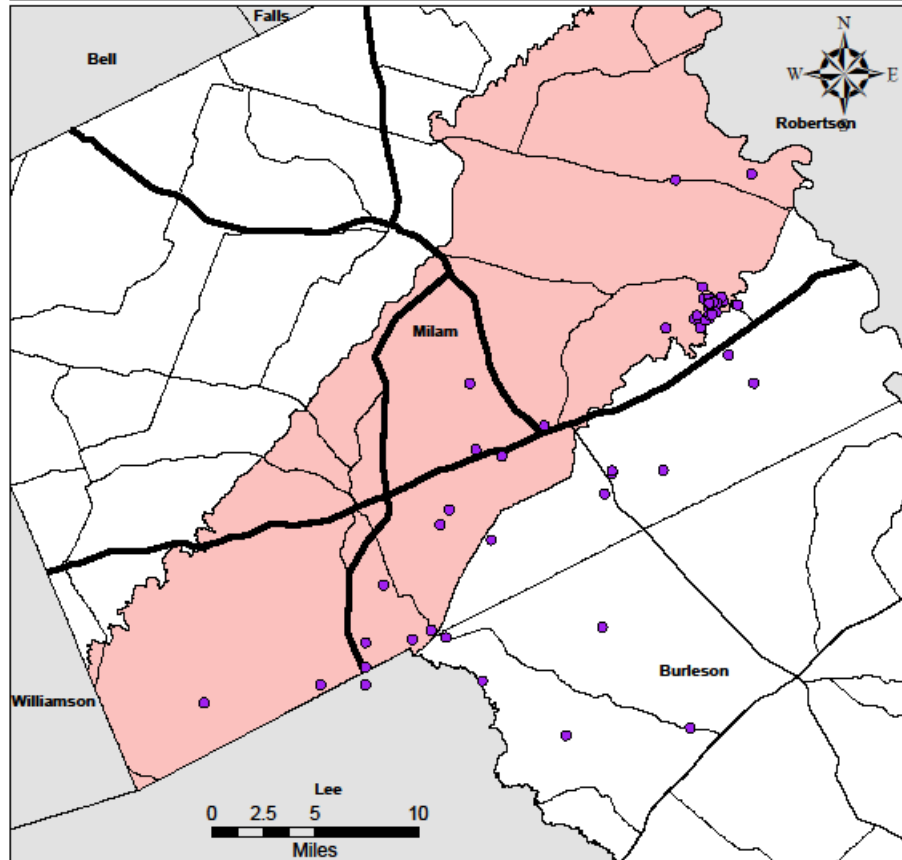
— FS

— FM

■ Carrizo-Wilcox Outcrop



## District Monitoring Wells - Calvert Bluff



This map illustrates the wells in the District's Monitoring Network that are identified to be in the shallow management zone set for 400 feet. The District makes an effort to make management decisions that are supported through best available science. In an effort to improve this science, more wells are needed to increase the quantity and quality of data. While the Carrizo-Wilcox has been prioritized, there is a strong need for some shift towards the minor aquifers in regards to number of shallow monitoring wells. This document is for DRAFT ONLY.

### Legend

#### Monitor Wells - Aquifer

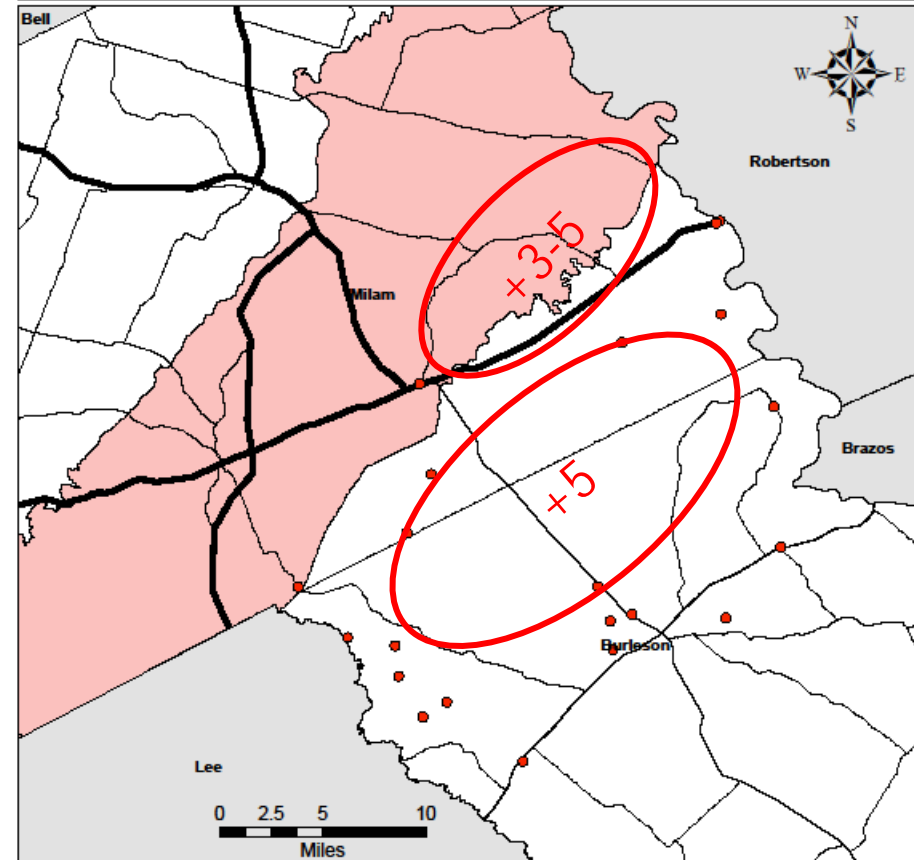
- Calvert Bluff

#### Roads

- US
- SH
- FS
- FM
- Carrizo-Wilcox Outcrop



## District Monitoring Wells - Carrizo



This map illustrates the wells in the District's Monitoring Network that are identified to be in the shallow management zone set for 400 feet. The District makes an effort to make management decisions that are supported through best available science. In an effort to improve this science, more wells are needed to increase the quantity and quality of data. While the Carrizo-Wilcox has been prioritized, there is a strong need for some shift towards the minor aquifers in regards to number of shallow monitoring wells. This document is for DRAFT ONLY.

### Legend

#### Monitor Wells - Aquifer

- Carrizo

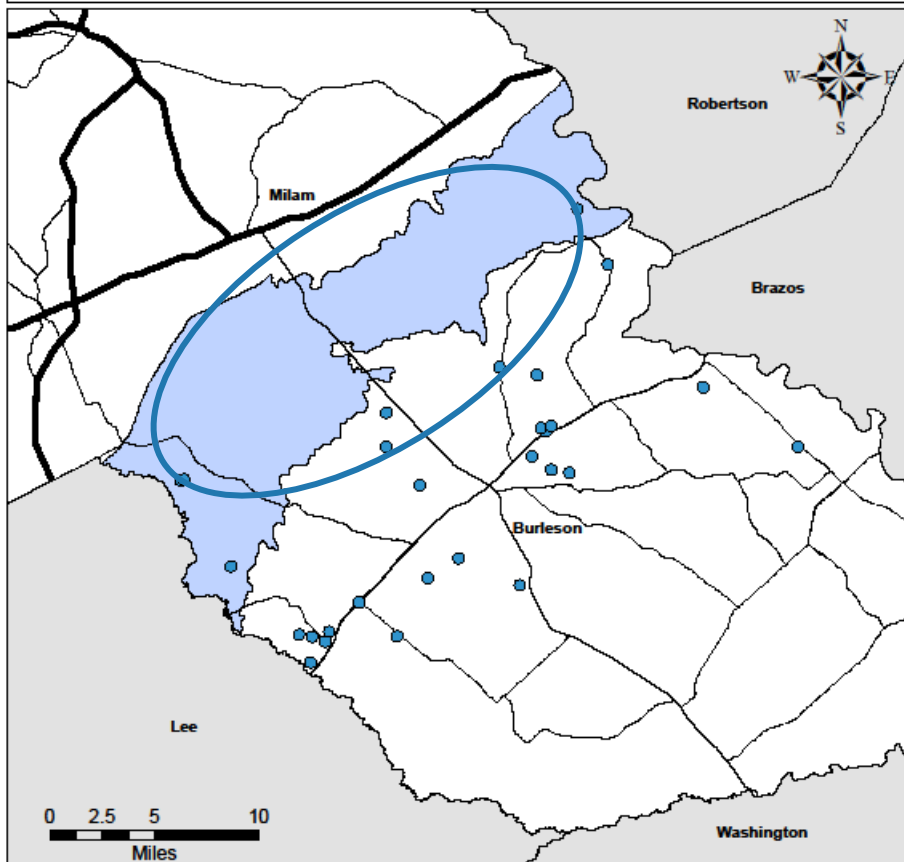
#### Roads

- US
- SH
- FS
- FM
- Carrizo-Wilcox Outcrop





## District Monitoring Wells - Queen City



This map illustrates the wells in the District's Monitoring Network that are identified to be in the shallow management zone set for 400 feet. The District makes an effort to make management decisions that are supported through best available science. In an effort to improve this science, more wells are needed to increase the quantity and quality of data. While the Carrizo-Wilcox has been prioritized, there is a strong need for some shift towards the minor aquifers in regards to number of shallow monitoring wells. This document is for DRAFT ONLY.

### Legend

#### Monitor Wells - Aquifer

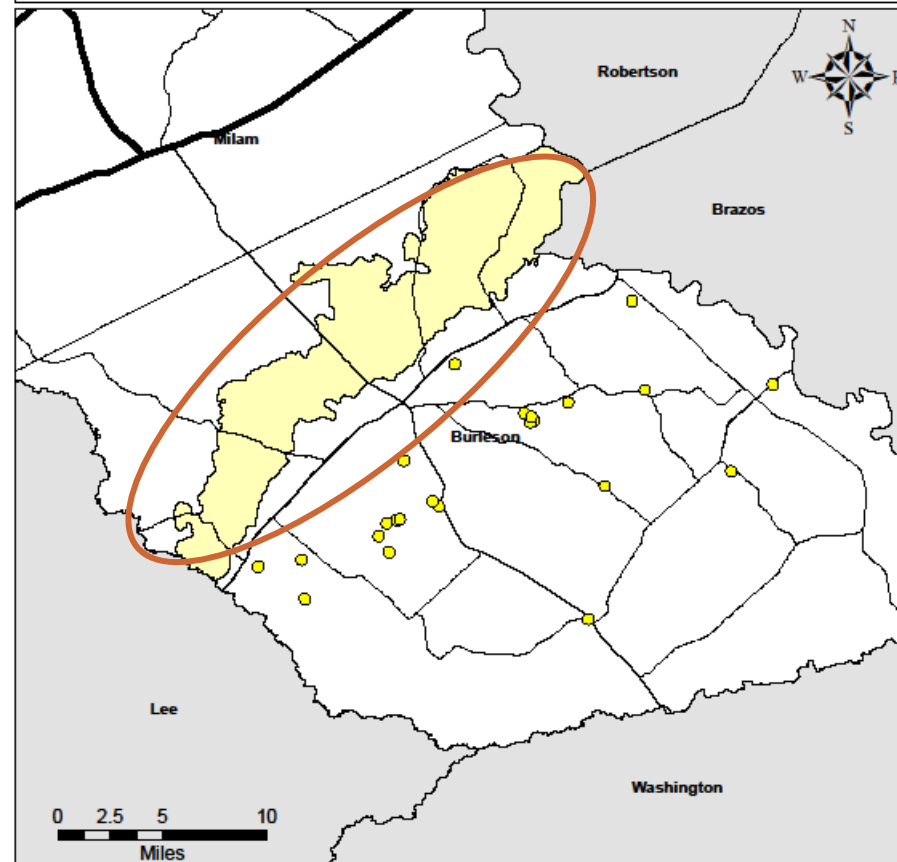
- Queen City

#### Roads

- US
- SH
- FS
- FM
- Queen City Outcrop



## District Monitoring Wells - Sparta



This map illustrates the wells in the District's Monitoring Network that are identified to be in the shallow management zone set for 400 feet. The District makes an effort to make management decisions that are supported through best available science. In an effort to improve this science, more wells are needed to increase the quantity and quality of data. While the Carrizo-Wilcox has been prioritized, there is a strong need for some shift towards the minor aquifers in regards to number of shallow monitoring wells. This document is for DRAFT ONLY.

### Legend

#### Monitor Wells - Aquifer

- Sparta

#### Roads

- US
- SH
- FS
- FM
- Sparta Outcrop



# QUESTION #4

**WHERE DO “I” FIND THIS DATA?**



TO BROWSE DATA, PLEASE VISIT:

[posgcd.org/public-interface/](http://posgcd.org/public-interface/)

