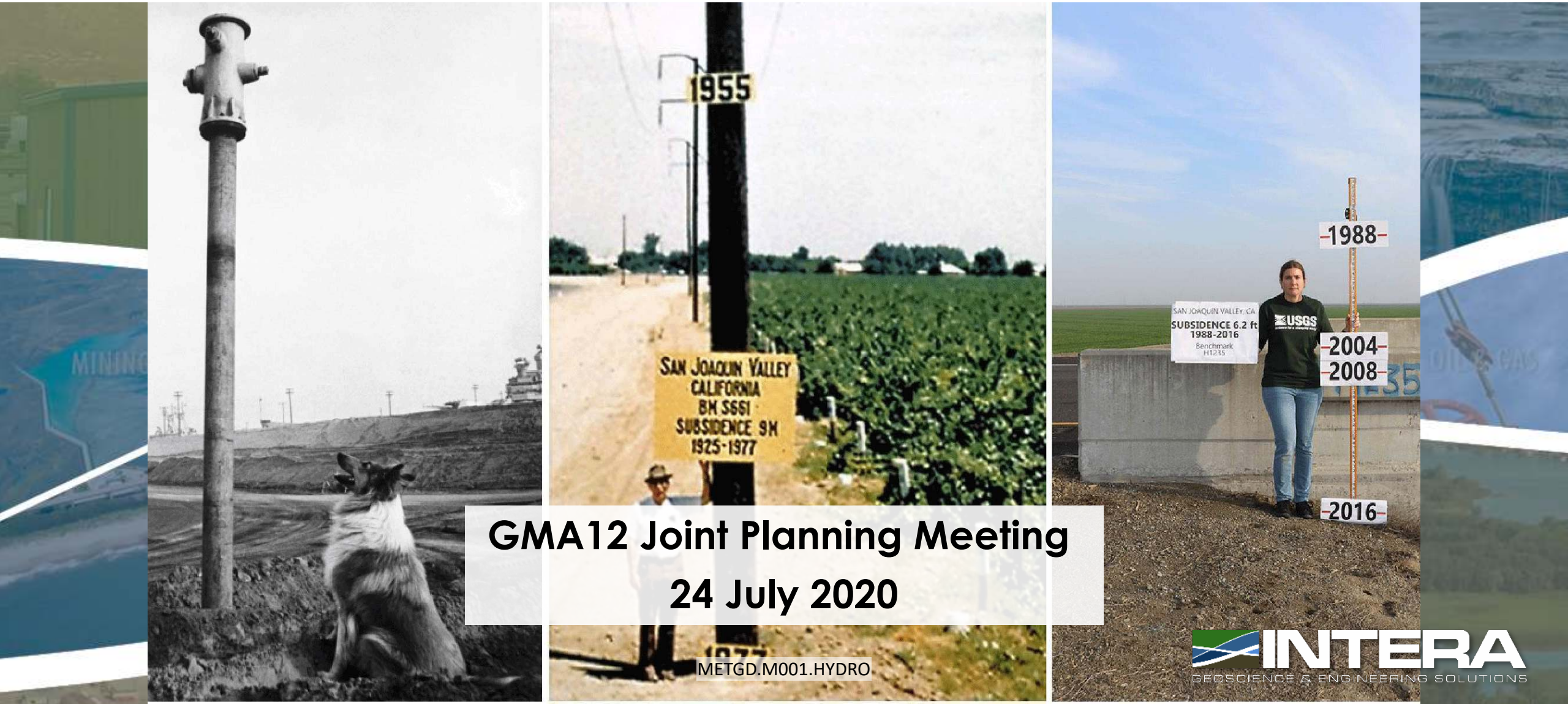


Evaluation of the Potential Impact of Subsidence in GMA12

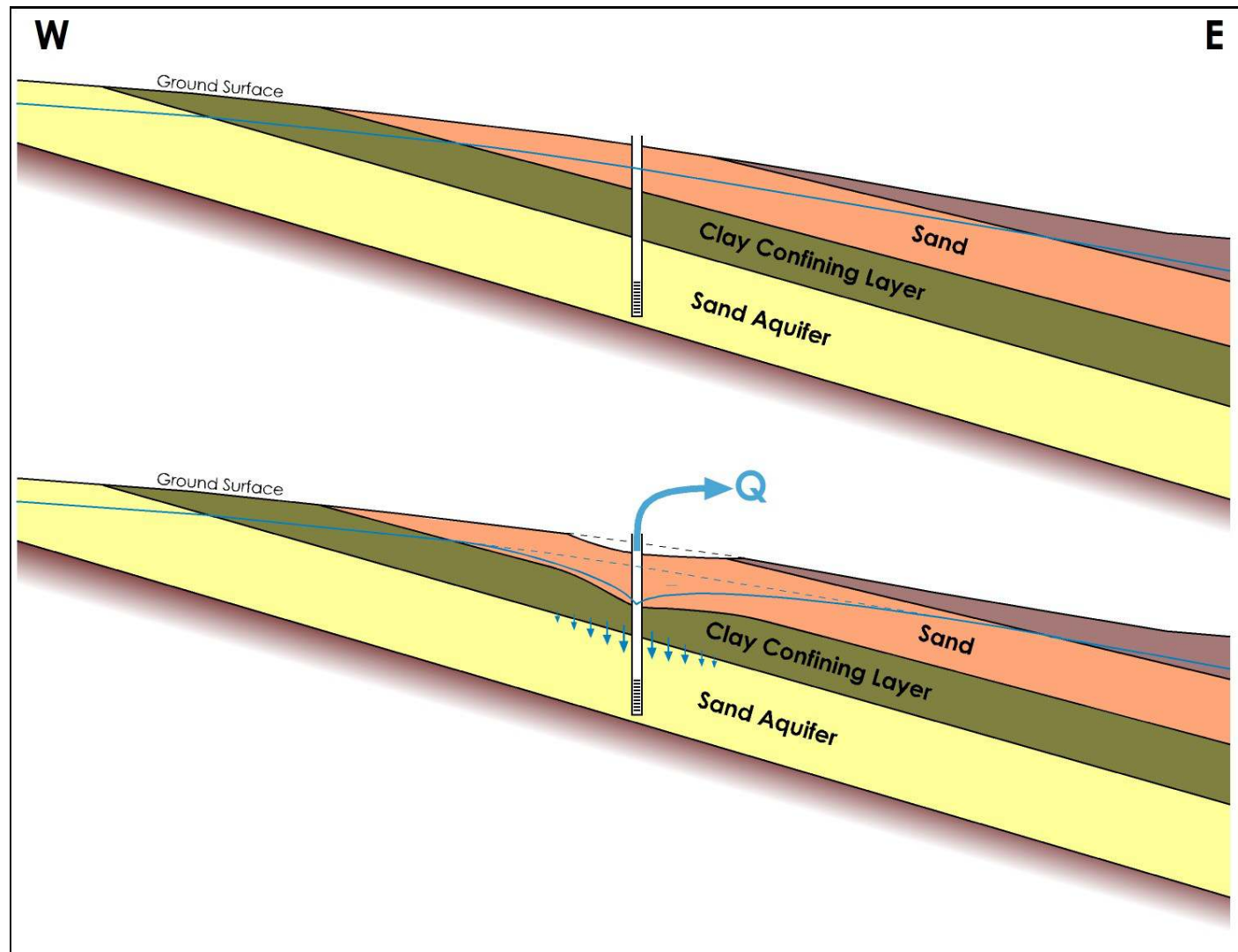


Desired Future Conditions: Nine Factors

- **Texas Water Code § 36.108(d) requires that GCDs consider a list of specific factors related to**
 - aquifer conditions
 - water management strategies,
 - potential scientific and socio-economic impacts
 - feasibility of achieving the DFCs
- **This presentation discusses the potential impact of the DFCs on subsidence in GMA12**

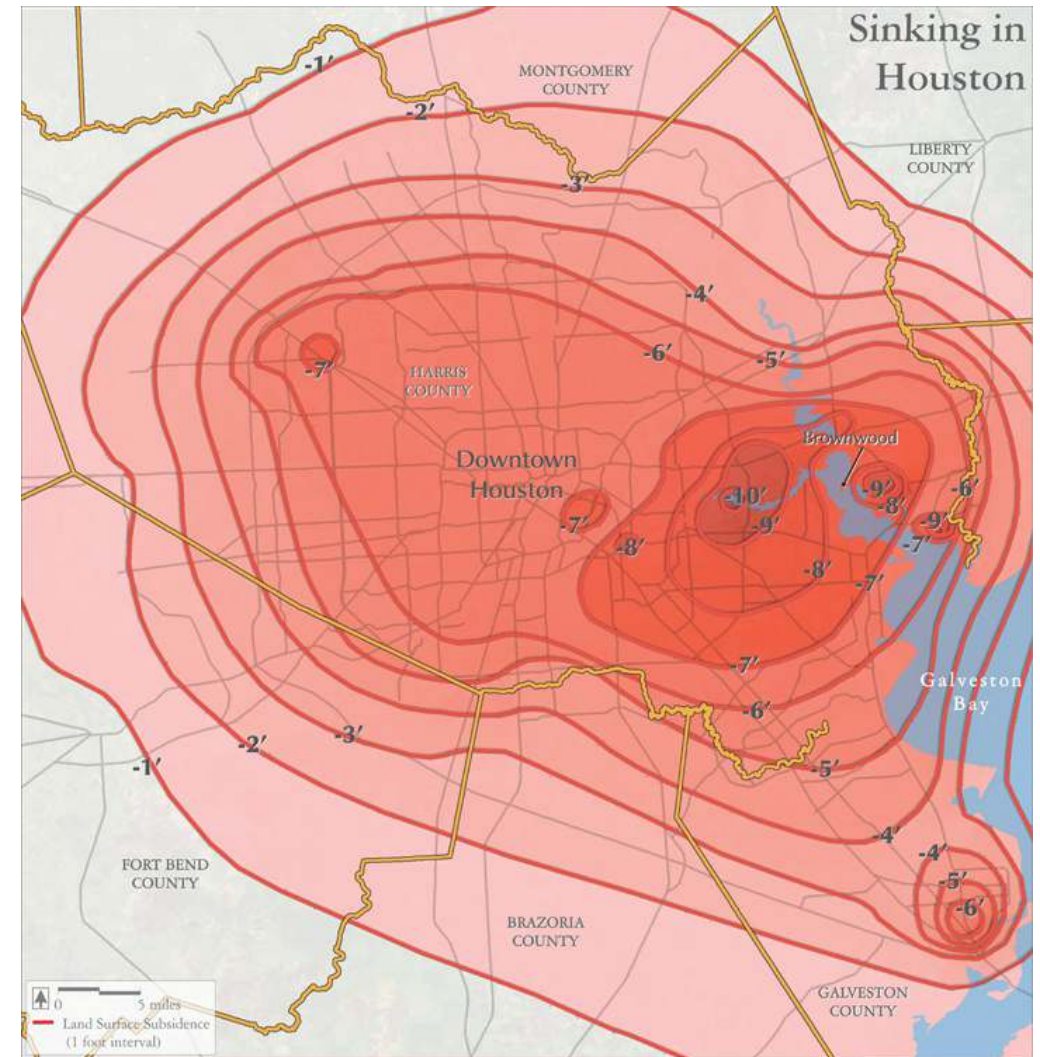


Pumping-induced subsidence



Observed subsidence in Texas

- **Considerable subsidence has been observed in Harris and Galveston counties**
- **No measurable subsidence observed within GMA12**
- **Function of depositional setting & relative age of sediments**
 - Gulf Coast (1-4 my) still “inflated” with water
 - Clairborne/Wilcox clays (+40 my) already compacted



Conclusion for GMA12

- **No observed historic subsidence**
- **Low risk of subsidence in future**

