



# Post Oak Savannah GCD Virtual Bore

**Well #1**  
**524 feet**

## Approximate Ground Surface Elevation

474.33

Latitude	30.513041				
Longitude	-96.794511				
Top Elev. (ft)	Bottom Elev. (ft)		Depth to Formation (ft)*	Formation Thickness (ft)*	Formation (Geologic Unit)
474.3	321.3		0	153	Sparta
321.3	271.1		153	50.3	Weches
271.1	-160.8		203.3	431.9	Queen City
-160.8	-262.2		635.1	101.4	Reklaw
-262.2	-605.1		736.5	342.9	Carrizo
-605.1	-1601.2		1079.4	996.1	Calvert Bluff
-1601.2	-1991.9		2075.6	390.6	Simsboro
-1991.9	-2840		2466.2	848.1	Hooper

\*Depths / Thicknesses are not to scale

**Disclaimer:** This product is for informational purposes only and has not been prepared for or suitable for legal, engineering, or other purposes. All representations in this virtual bore represent only the approximate relative depths and thicknesses based on geological interpretation and extrapolation of available well data. Additional data may modify one or more of these formation surfaces. The Post Oak Savannah Groundwater Conservation District expressly disclaims any and all liability in connection herewith.



# Post Oak Savannah GCD Virtual Bore

**Well #2**  
**455 feet**

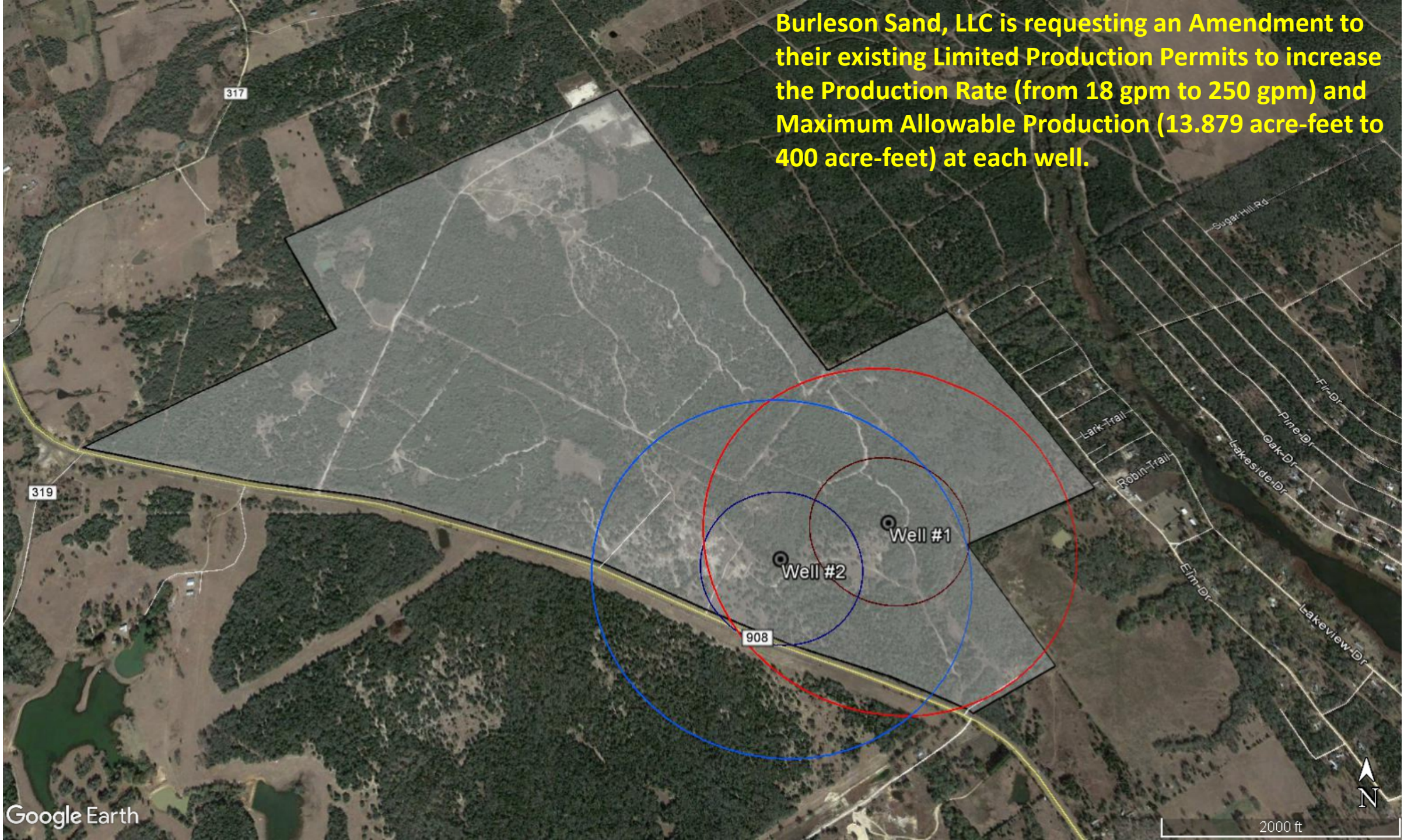
Latitude		30.513614		Approximate Ground Surface Elevation	
Longitude		-96.797236		489.97	
Top Elev. (ft)	Bottom Elev. (ft)		Depth to Formation (ft)*	Formation Thickness (ft)*	Formation (Geologic Unit)
490	363.6		0	126.4	Sparta
363.6	346.3		126.4	17.3	Weches
346.3	-95.5		143.7	441.8	Queen City
-95.5	-199.3		585.5	103.8	Reklaw
-199.3	-515.5		689.3	316.2	Carrizo
-515.5	-1456.5		1005.5	941	Calvert Bluff
-1456.5	-1826.1		1946.5	369.6	Simsboro
-1826.1	-2703.4		2316.1	877.4	Hooper

\*Depths / Thicknesses are not to scale

**Disclaimer:** This product is for informational purposes only and has not been prepared for or suitable for legal, engineering, or other purposes. All representations in this virtual bore represent only the approximate relative depths and thicknesses based on geological interpretation and extrapolation of available well data. Additional data may modify one or more of these formation surfaces. The Post Oak Savannah Groundwater Conservation District expressly disclaims any and all liability in connection herewith.




**Burleson Sand, LLC is requesting an Amendment to their existing Limited Production Permits to increase the Production Rate (from 18 gpm to 250 gpm) and Maximum Allowable Production (13.879 acre-feet to 400 acre-feet) at each well.**












The Dark Red circle indicates that at 250 GPM Well #1 does not meet the required property Spacing (750 feet).

This is an aerial photograph from Google Earth showing a wooded area and a property boundary. A point labeled 'Well #1' is marked in the wooded area. Two concentric circles are drawn around the well: a green circle and a dark red circle. The green circle is tangent to the property boundary, while the dark red circle extends beyond it. A scale bar and a north arrow are in the bottom right corner.

Based on given spacing, 720 feet (Green circle) to property line, it is recommended that Production Rate be limited to 240 GPM.

Well #1



An aerial photograph from Google Earth showing a wooded area. A dark blue circle is drawn across the image, representing a 750-foot property spacing. A black line runs diagonally across the lower portion of the image, likely representing a road or boundary. A road sign with the number '908' is visible on a road in the bottom left. A north arrow and a 200-foot scale bar are in the bottom right corner. A label 'Well #2' with a pin icon is located in the upper center of the wooded area.

Well #2

The Dark Blue circle indicates the property spacing required (750 feet) for the requested 250 GPM Production Rate.

District staff has interpreted rules to allow for use of roadways and right-of-ways for meeting spacing.

908



