

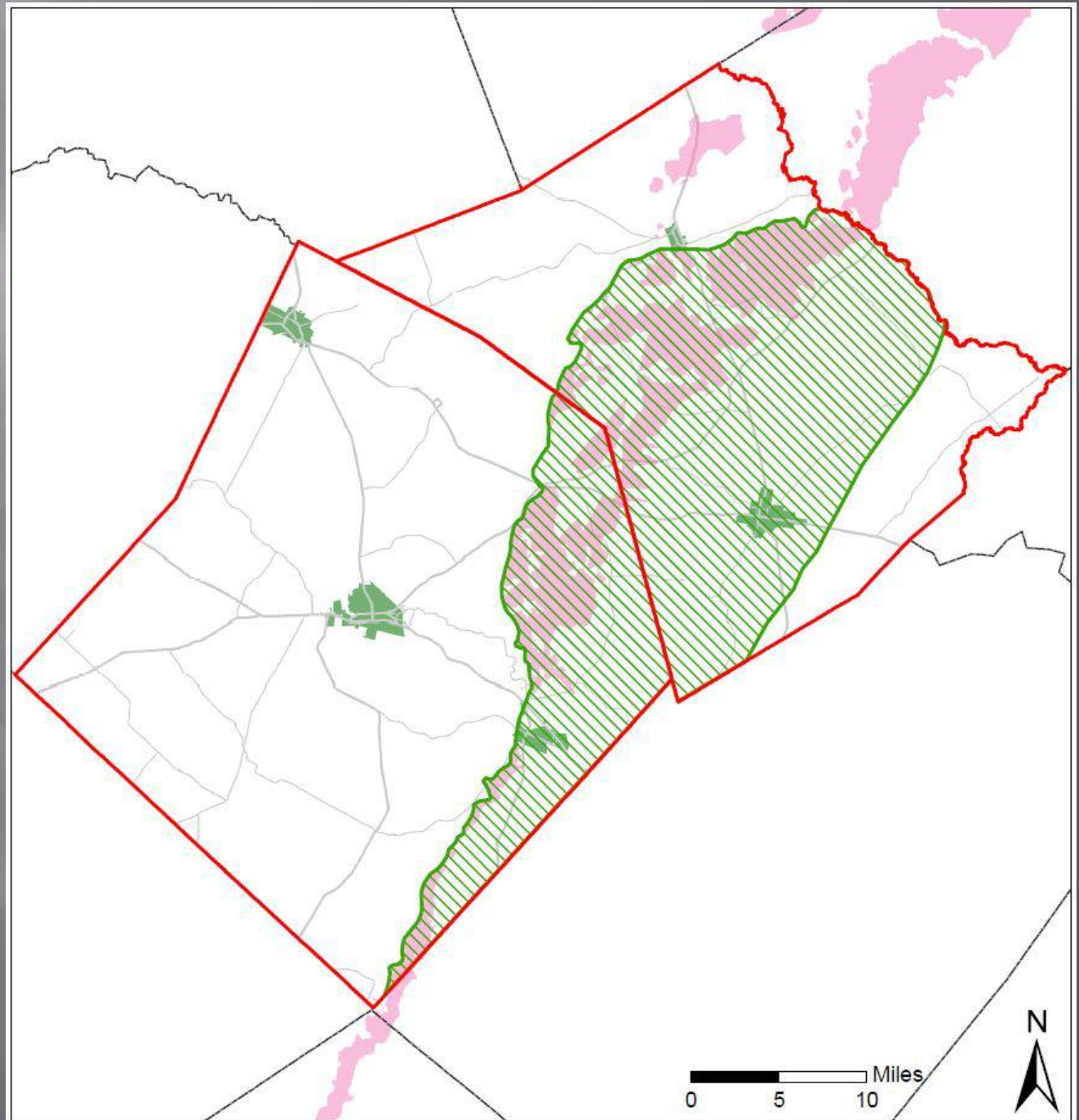
# Potential DFC Monitoring Zones

*presented to the LPGCD Board on September 19, 2018*

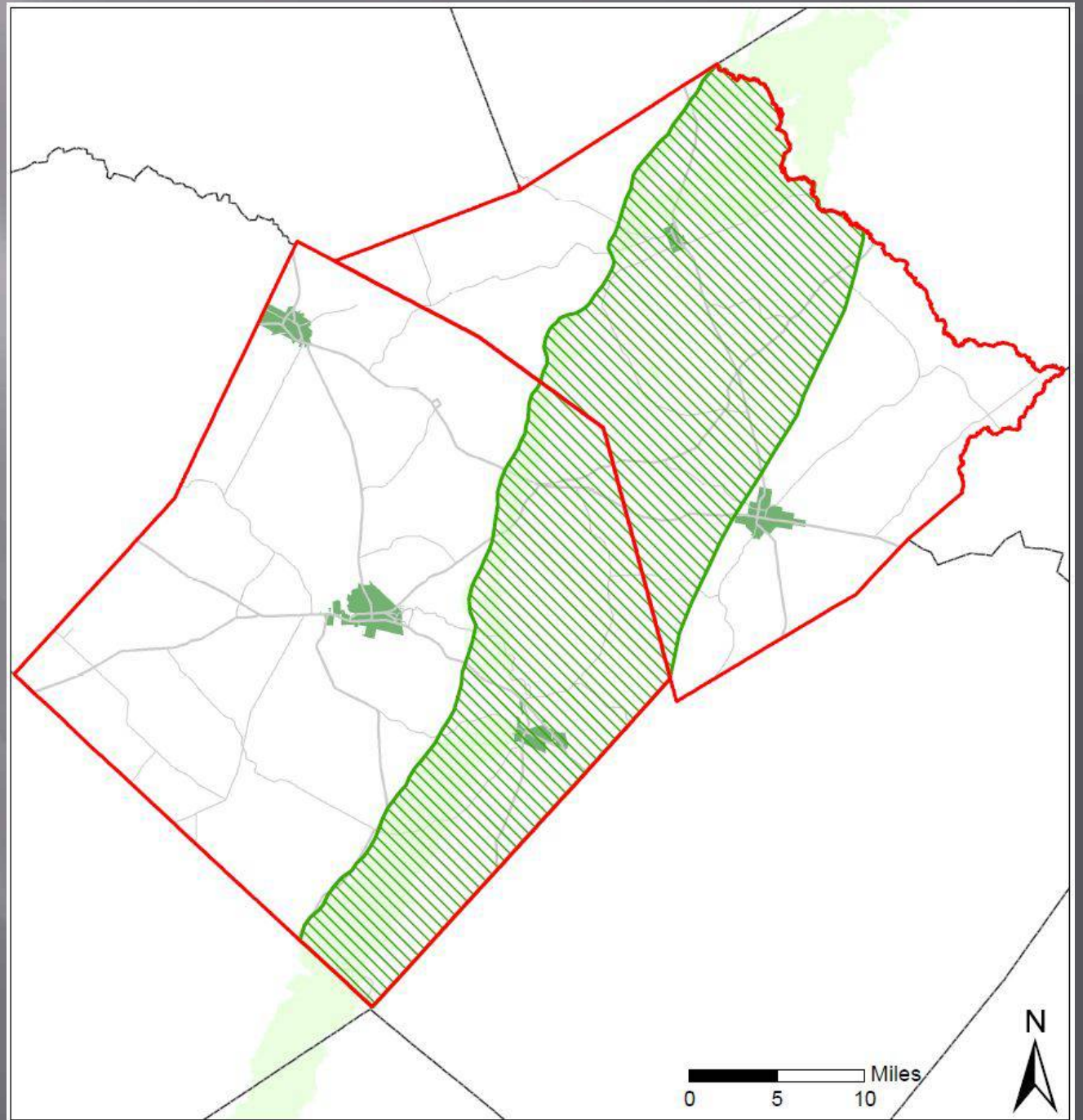
# DFCs

- ▣ Currently stated as average drawdowns across the entire district
- ▣ Monitoring drawdowns across the entire district is difficult due to the availability of wells
- ▣ Revised approach would shrink the DFC monitoring zones to the aquifer outcrop and shallow downdip, where most of the wells are present

# Sparta

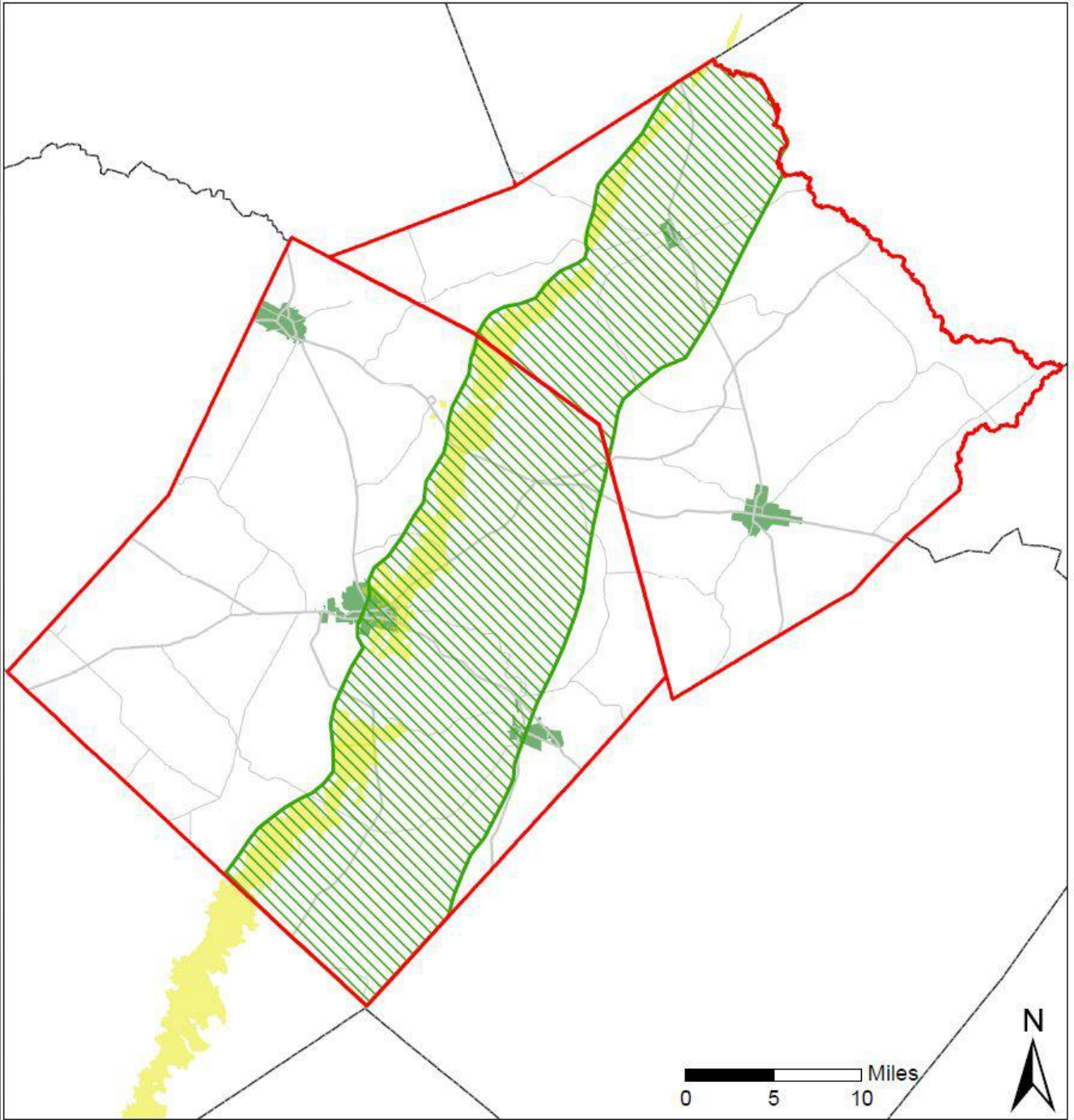


# Queen City

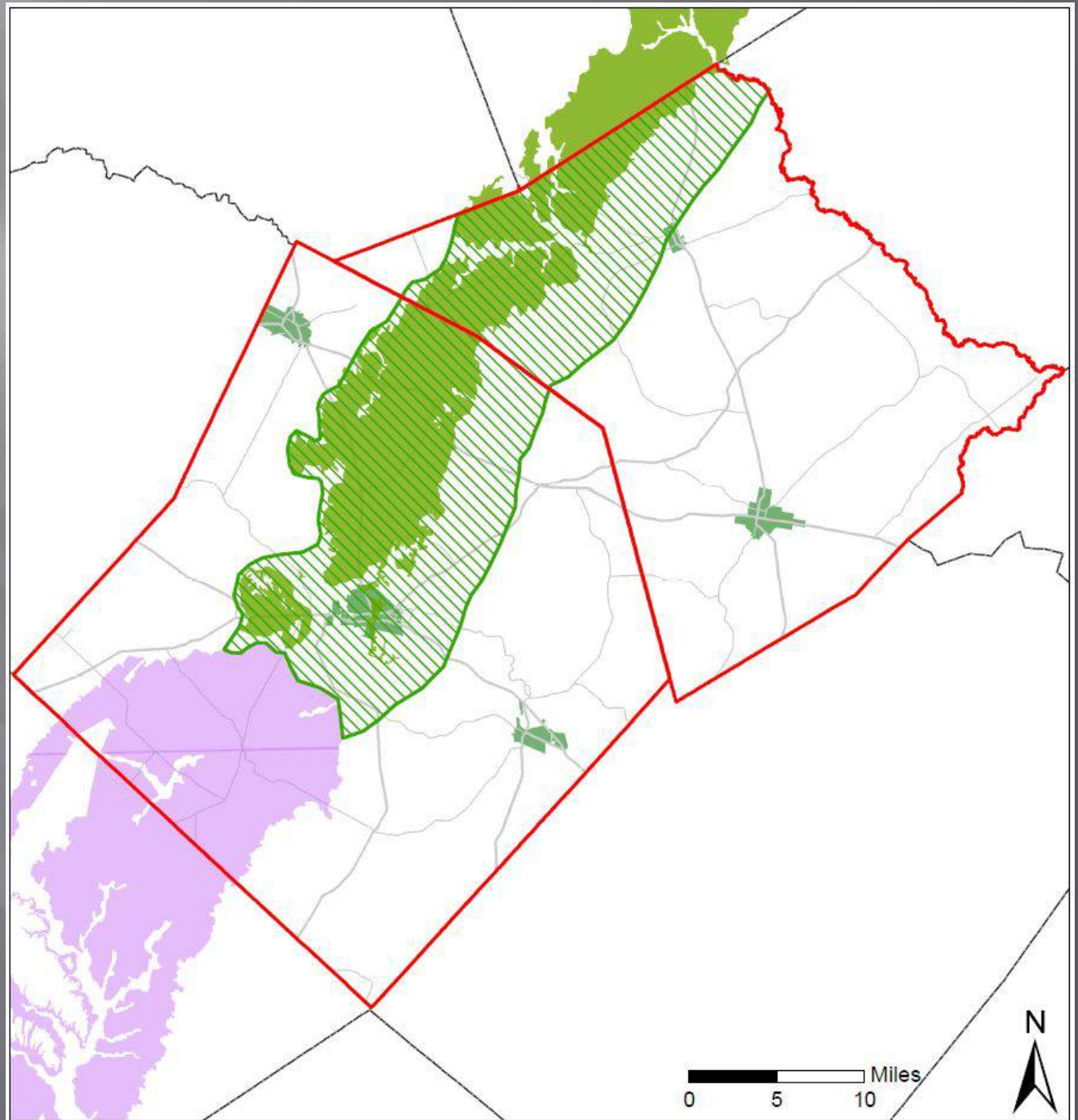




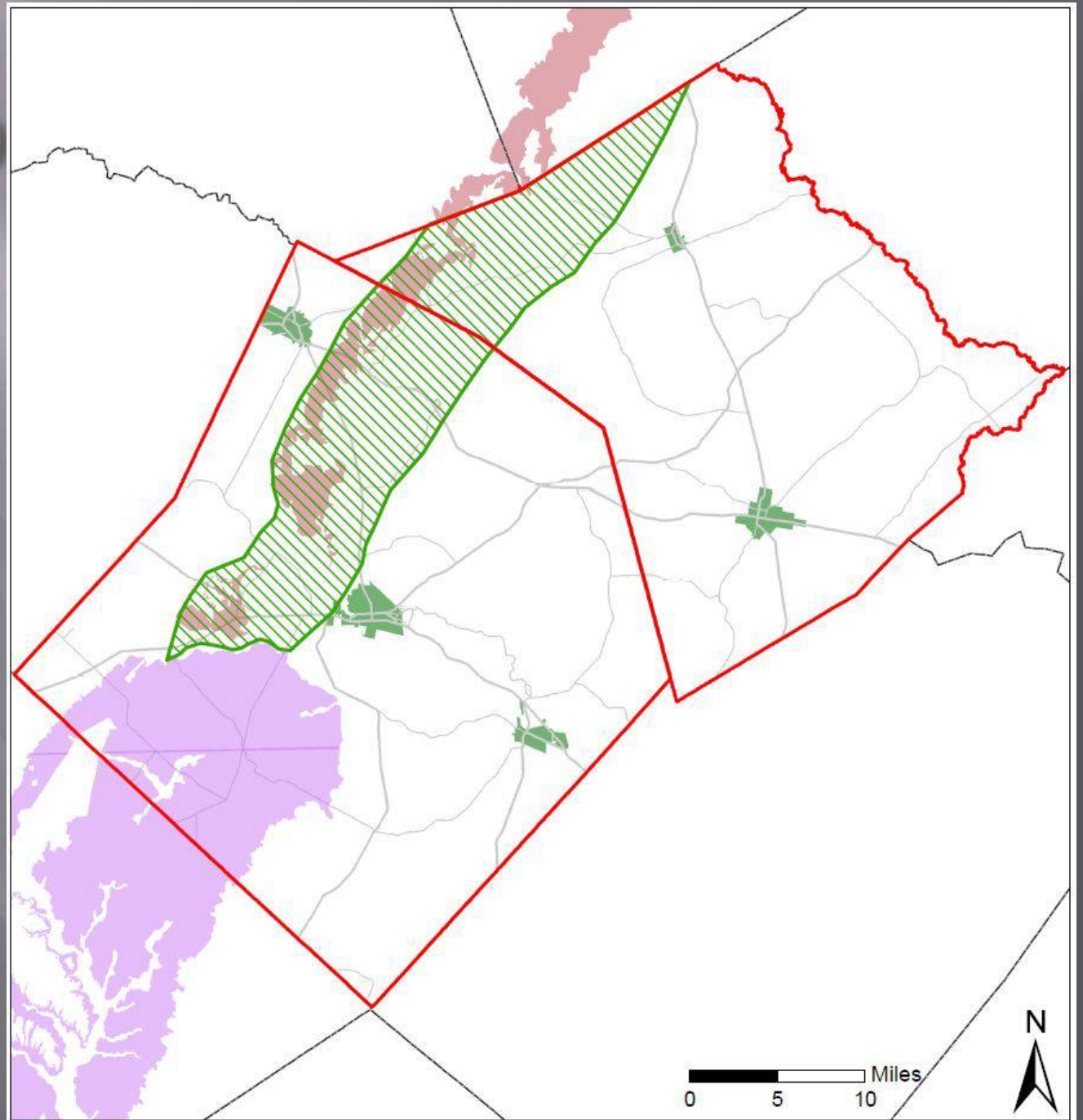
# Carrizo



# Calvert Bluff

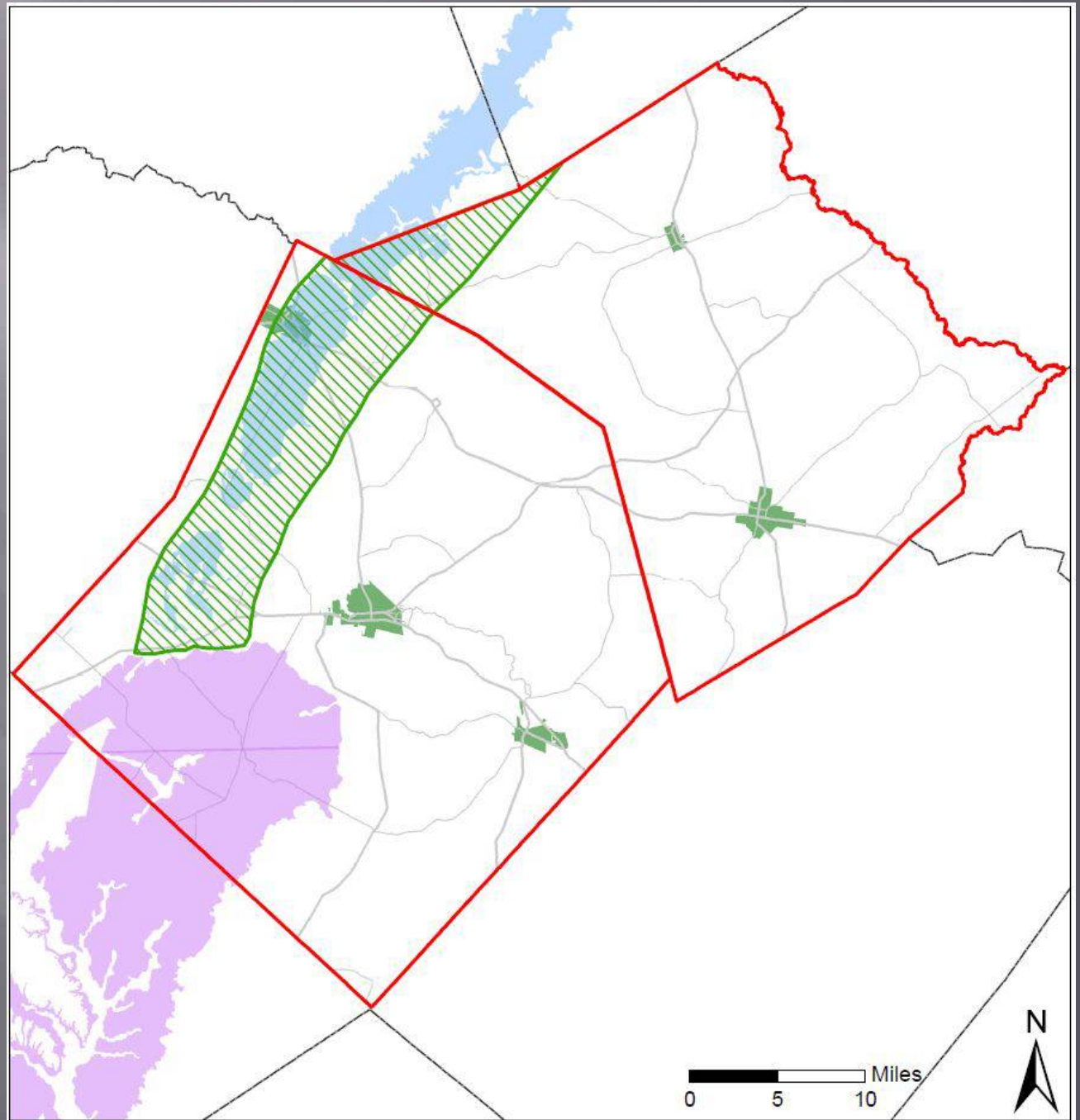


# Simsboro





# Hooper





# Change in Drawdowns

<b>Aquifer</b>	<b>Approved DFC (feet)</b>	<b>Drawdown in Proposed DFC Zone (feet)</b>
Sparta	5	1.4
Queen City	15	11
Carrizo	62	58
Calvert Bluff	100	49
Simsboro	240	125
Hooper	165	55