



POSGCD AQUIFER CONSERVANCY PROGRAM (PACP)

August 15, 2018

Milam & Burleson Counties

Groundwater Summit

Steven Wise, Board Vice President

Gary Westbrook, General Manager



POSGCD Mission Statement

THE POST OAK SAVANNAH GROUNDWATER CONSERVATION DISTRICT (POSGCD) **MISSION** IS TO PROVIDE FOR THE **CONSERVATION**, PRESERVATION, PROTECTION, RECHARGING, AND PREVENTION OF WASTE OF GROUNDWATER, AND TO PROTECT GROUNDWATER USERS, BY ADOPTING AND ENFORCING **RULES CONSISTENT WITH STATE LAW.**

CURRENT POSGCD CONSERVATION PROGRAMS

- GROUNDWATER CONSERVATION GRANTS FOR:
 - >LOCAL WATER UTILITIES
 - SINCE 2006- 85 GRANTS TOTALING \$12.3 M
 - >RAINWATER HARVESTING
 - \$107,000 FOR 2017 AND 2018
 - >FIRE DEPARTMENTS IN THE DISTRICT
 - \$25,000 PER YEAR



POSGCD Toolbox for Conservation

- SPACING REQUIREMENTS
- CONTIGUOUS ACREAGE REQUIREMENTS
- MAXIMUM PRODUCTION LIMITS
- ABILITY TO ADJUST PERMIT TERMS
- MONITORING WATER LEVELS
- DESIRED FUTURE CONDITIONS & PROTECTIVE DRAWDOWN LIMITS

-NEW TOOL-

- **AQUIFER CONSERVANCY PROGRAM (PACP)**



BENEFITS



- CONSERVE GROUNDWATER FOR FUTURE GENERATIONS
- FINANCIAL REWARD FOR NOT PRODUCING PERMITTED AMOUNTS OF WATER
- COMPLETELY VOLUNTARY- JOIN WITH OTHER LIKE MINDED WATER CONSERVATIONISTS
- EXEMPT WELLS ARE ACCEPTABLE (DOMESTIC & LIVESTOCK- <18 GPM)
- REMAIN ELIGIBLE TO PARTICIPATE IN OTHER POSGCD PROGRAMS

RAINWATER HARVESTING

ABANDONED WELL PLUGGING GRANT

WELL ASSISTANCE PROGRAM

- EMPOWERS LOCAL POPULATION TO AFFECT LONG TERM AVAILABILITY
- COULD AFFECT AVAILABILITY OF NEEDED CONTIGUOUS ACREAGE FOR FUTURE PROJECTS
- LEGACY- LONG TERM AFFECTS WHICH EXTEND BEYOND CURRENT MANAGEMENT AND BOARD



Aquifer Conservancy Program

Public Reviews

COMMISSIONERS COURTS- BOTH MILAM AND BURLESON

TOWN HALL MEETINGS- 3

BOARD MEETINGS- 3

MULTIPLE PUBLIC PRESENTATIONS

MULTIPLE SURVEYS- EMAIL, WEBSITE POP-UP, IN PERSON

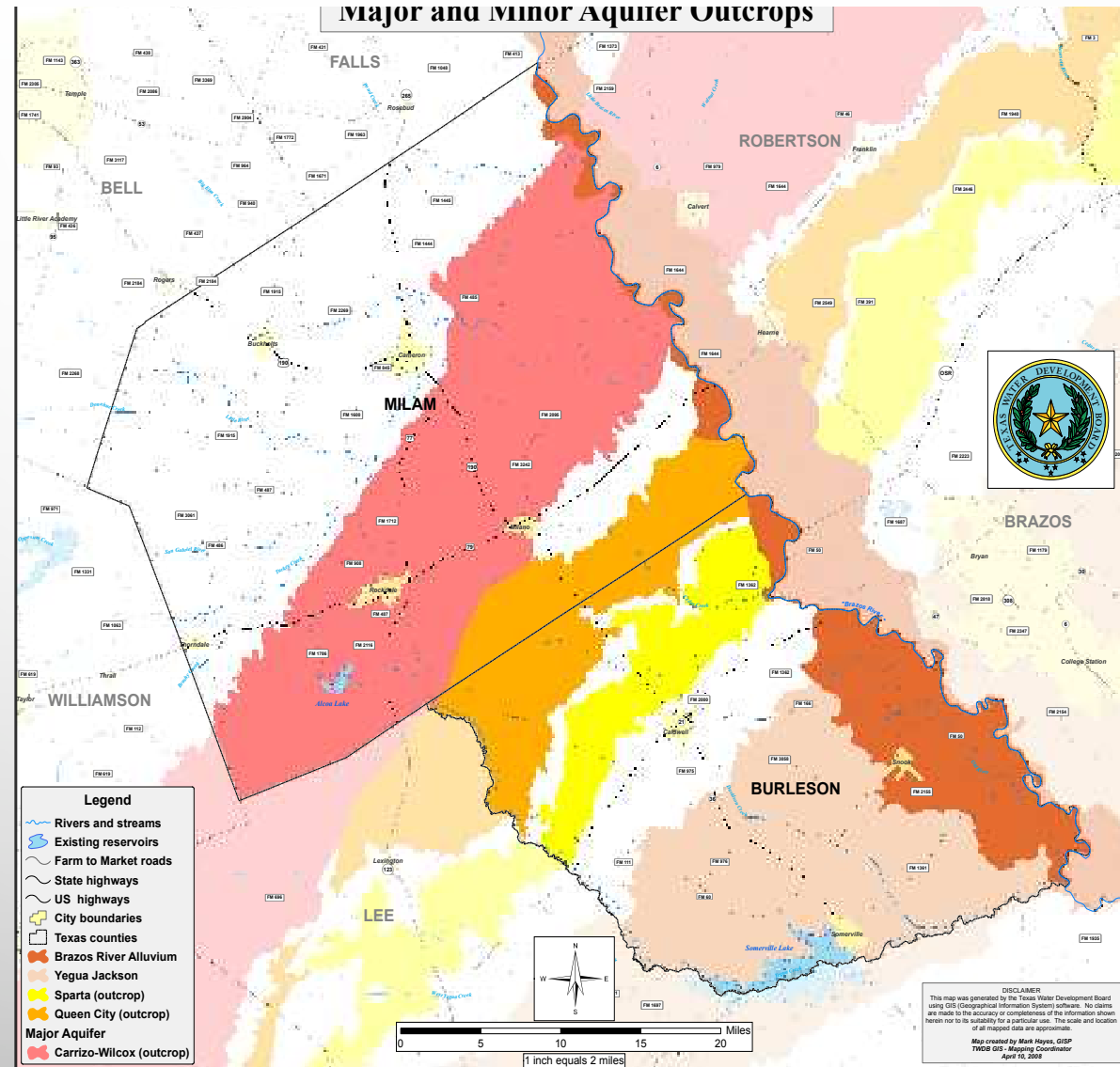
EVOLUTION OF PRESENTATIONS AND INFORMATION

QUESTIONS, COMMENTS, & PARTICIPATION



WHO IS ELIGIBLE?

You must own land above the Carrizo-Wilcox Aquifer





IT IS
ESTIMATED
THAT THE
POPULATION
OF TEXAS IS
GROWING BY
MORE THAN
1,000 PER DAY



Will we run out of water?

NO!

**PREVIOUS POSGCD WORK HAS
PROVIDED A CONSERVATIVE,
PRO-ACTIVE, & PROTECTIVE
MANAGEMENT APPROACH.**



WILL THIS STOP EXPORT?

IT WAS NOT DESIGNED TO-

GROUNDWATER IS PRIVATELY OWNED, AND STATE LAW DOES NOT ALLOW A GROUNDWATER DISTRICT TO PROHIBIT EXPORT.



HOW WILL PACP CONSERVE WATER?

- WILL REDUCE ELIGIBLE ACREAGE WHICH CAN BE PERMITTED FOR FUTURE PRODUCTION
- PROVIDES ALTERNATIVE TO LEASING
- WORKS IN CONJUNCTION WITH OTHER POSGCD MANAGEMENT STRATEGIES (TOOLS)
- ALL EFFECTS ARE LONG TERM AND BIG PICTURE



HOW WILL THIS BE FUNDED?

**FEES COLLECTED ON PRODUCTION
AND TRANSPORT PERMITTED
AMOUNTS**

*****(AGRICULTURE IS EXEMPT FROM PRODUCTION FEES)**



AM I LEASING MY WATER TO POSGCD?

No!

POSGCD IS A GROUNDWATER CONSERVATION
DISTRICT & THIS IS A CONSERVANCY
PROGRAM



CAN POSGCD SELL WATER?

No!

POSGCD IS A REGULATORY AGENCY OF THE
STATE OF TEXAS

POSGCD NEVER ASSUMES OWNERSHIP OF
YOUR PROPERTY RIGHTS!!



WHAT AM I GIVING UP?

- **ABILITY TO PERMIT OR ASSIGN WATER FOR NON-EXEMPT USES DURING LENGTH OF SELECTED TERM**

The background of the slide is a light gray gradient. It is decorated with several realistic water droplets of various sizes, primarily located in the top-left, top-right, and bottom-right corners, creating a clean and fresh aesthetic.

GUIDELINES AND INFORMATION



**1. FUNDED BY PRODUCTION AND
TRANSPORT FEES COLLECTED BY THE
DISTRICT. STAND ALONE DEDICATED
BUDGET ITEM.**

**2. VOLUNTARY PARTICIPATION WITH
FLEXIBILITY- CAN COMMIT ALL OR PART
OF ACREAGE**



3. POSGCD NEVER ASSUMES OWNERSHIP OF LANDOWNER GROUNDWATER RIGHTS

4. CHANGE IN OWNERSHIP ENDS AGREEMENT

A. TRANSFER TO LIVING ESTATE OR HEIRS

B. SALE OF PROPERTY

C. DEATH

(NEW OWNER HAS OPTION TO CONTINUE)



5. FLEXIBLE COMMITMENT OPTIONS WITH ENROLLMENT INCENTIVE OF \$10/ACRE FOR 2019

A. FIVE YEARS- \$5 PER ACRE PER YEAR

B. TEN YEARS- \$8 PER ACRE PER YEAR

C. TWENTY YEARS- \$10 PER ACRE PER YEAR

D. THERE IS AN OPTION WITH NO PAYMENT



**6. PACP NEW MEMBER 90 DAY
SIGN-UP PERIOD ANNUALLY**

**7. OWNER MUST OWN BOTH
SURFACE OF LAND AND
UNENCUMBERED
GROUNDWATER RIGHTS**



**8. CANNOT LEASE OR PERMIT
GROUNDWATER RIGHTS
DURING SELECTED TERM**

**9. EXEMPT WELLS UNDER
POSGCD RULES (DOMESTIC &
LIVESTOCK) ARE ACCEPTABLE**



**10. PROPERTY MUST BE
LOCATED OVER THE CARRIZO-
WILCOX AQUIFER**



PACP AMBASSADOR PROGRAM

QUALIFICATIONS:

- 1. SUPPORT CONSERVATION OF AQUIFERS**
- 2. WILLING TO PARTICIPATE IN ORIENTATION ON PACP**
- 3. DESIRE TO CARRY THE MESSAGE**

HOW CAN I HELP?



- 1. FILL OUT AND TURN IN SURVEY**
- 2. SIGN UP TO BE A PACP AMBASSADOR**
- 3. ATTEND PACP ORIENTATION**
- 4. SPREAD THE WORD**
- 5. PROVIDE FEEDBACK TO POSGCD**
- 6. CO-PARTNER EDUCATIONAL EVENTS**



POST OAK SAVANNAH
GROUNDWATER
CONSERVATION DISTRICT

AQUIFER CONSERVANCY
PROGRAM
FOR MORE INFO SEE OUR
WEBSITE

WWW.POSGCD.ORG

OR CALL OUR OFFICE
512-455-9900