




MONITORING NETWORK UPDATE

A PRESENTATION BY
BOBBY BAZAN &
RALPH SIFUENTES



2018 ANNUAL MONITORING CAMPAIGN

- CONDUCTED ANNUALLY FROM FEBRUARY THRU APRIL
 - 134 WELLS RECORDED
 - TRENDS WERE ON PAR WITH PREVIOUS YEARS' AVERAGES
 - MEASURED SOME UNEXPECTED DRAWDOWNS
- 

UNEXPECTED DRAWDOWN

- MEASUREMENTS AT DEANVILLE WSC WERE NOTICEABLY LOWER THAN PREVIOUS YEAR
 - WHAT WE DO KNOW:
 - WE HAVE TAKEN ADDITIONAL MEASUREMENTS THIS SPRING AND SUMMER
 - WATER LEVELS ARE LOWER IN SUMMER DUE TO PEAK DEMAND
 - WELLS ARE STILL CAPABLE OF PROVIDING FOR THEIR CUSTOMERS
 - WHAT WE ARE STILL TRYING TO LEARN:
 - WHAT CAUSED DRAWDOWN
 - SEASONAL WATER LEVEL FLUCTUATIONS
 - HYDRAULIC PROPERTIES AT WELL

COMPLIANCE WITH DESIRED FUTURE CONDITIONS

Management Zone	DFC	Drawdown from 2000 to 2012		Drawdown from 2000 to 2013		Drawdown from 2000 to 2014		Drawdown from 2000 to 2015		Drawdown from 2000 to 2016		Drawdown from 2000 to 2017	
		<i>feet</i>	%	<i>feet</i>	%	<i>feet</i>	%	<i>feet</i>	%	<i>feet</i>	%	<i>feet</i>	%
Yegua Jackson	100	31.8	32%	34.5	34%	35.7	36%	40.0	40%	47.0	47%	46.9	47%
Sparta	30	3.5	12%	4.2	14%	4.6	15%	5.8	19%	8.0	27%	11.0	37%
Queen City	30	3.1	10%	2.8	9%	3.2	11%	1.8	6%	0.2	1%	-0.4	-1%
Carrizo	65	6.7	10%	9.3	14%	--	--	10.2	16%	10.6	16%	11.4	18%
Calvert Bluff (Upper Wilcox)	140	-11.4	-8%	-11.9	-9%	-11.5	-8%	-8.9	-6%	-9.2	-7%	-10.9	-8%
Simsboro (Middle Wilcox)	300	10.9	4%	14.0	5%	14.2	5%	13.2	4%	11.6	4%	11.1	4%
Hooper (Lower Wilcox)	180	7.1	4%	7.3	4%	8.0	4%	9.1	5%	8.6	5%	6.0	3%

COMPLIANCE WITH PROTECTIVE DRAWDOWN LIMITS

Shallow Management Zone	PDL	Drawdown from 2000 to 2012		Drawdown from 2000 to 2013		Drawdown from 2000 to 2014		Drawdown from 2000 to 2015		Drawdown from 2000 to 2016		Drawdown from 2000 to 2017	
		<i>feet</i>	%	<i>feet</i>	%	<i>feet</i>	%	<i>feet</i>	%	<i>feet</i>	%	<i>feet</i>	%
Yegua Jackson	-15	-5.7	38%	-6.4	42%	-6.8	46%	-7.3	49%	-4.4	29%	-3.1	21%
Sparta	-10	-4.0	40%	-4.5	45%	-4.9	49%	-4.5	45%	-3.3	33%	-2.4	24%
Queen City	-10	-3.4	34%	-4.1	41%	-4.6	46%	-4.2	42%	-2.3	23%	-1.2	12%
Carrizo	-20	-4.7	23%	-5.8	29%	-6.2	31%	-5.8	29%	-3.4	17%	-2.2	11%
Calvert Bluff (Upper Wilcox)	-20	-5.9	29%	-7.0	35%	-7.2	36%	-7.0	35%	-5.7	28%	-4.5	22%
Simsboro (Middle Wilcox)	-20	-6.0	30%	-6.6	33%	-6.7	33%	-6.5	33%	-5.9	30%	-4.0	20%
Hooper (Lower Wilcox)	-20	-6.0	30%	-6.2	31%	-6.3	32%	-6.4	32%	-6.0	30%	-4.3	22%

CONTINUING TO EXPAND

BOARD ACTION RECENTLY ADOPTED PROTOCOLS FOR
EVALUATING COMPLIANCE WITH DFCS AND PDLS.

ALSO INCLUDED IN THIS DOCUMENT IS PROTOCOL
FOR MEASURING WATER LEVELS

Draft: Post Oak Savannah Guidance Document for Evaluating Compliance with Desired Future Conditions and Protective Drawdown Limits

Prepared for:



Post Oak Savannah Groundwater Conservation District
310 E Ave C
Milano, TX 76556

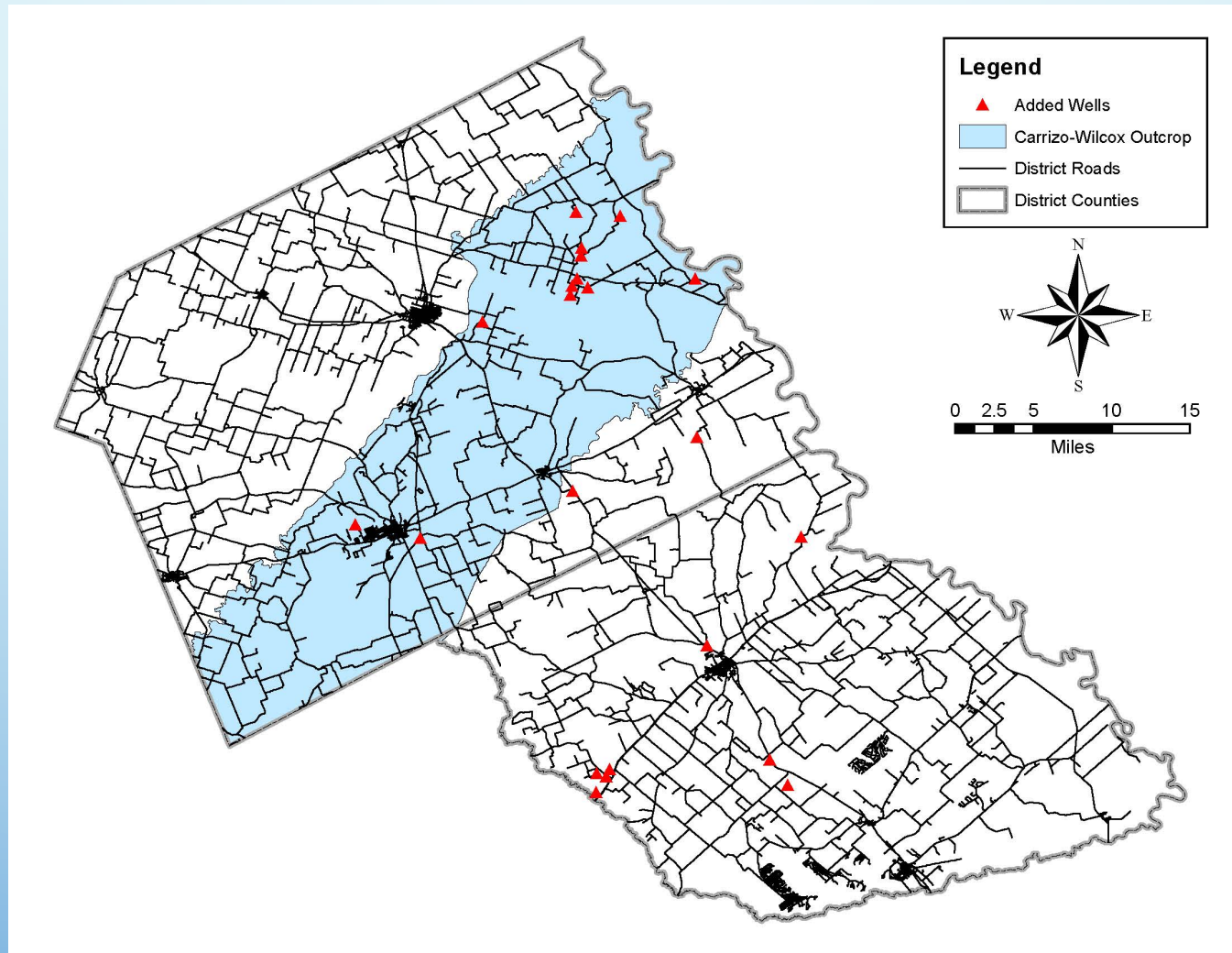
Prepared by:



August 2018

Version 2.0

CONTINUING TO EXPAND



WANT TO ADD YOUR WELL?

IF YOU WOULD LIKE TO ADD YOUR WELL TO THE NETWORK
CONTACT:

BOBBY BAZAN BBAZAN@POSGCD.ORG

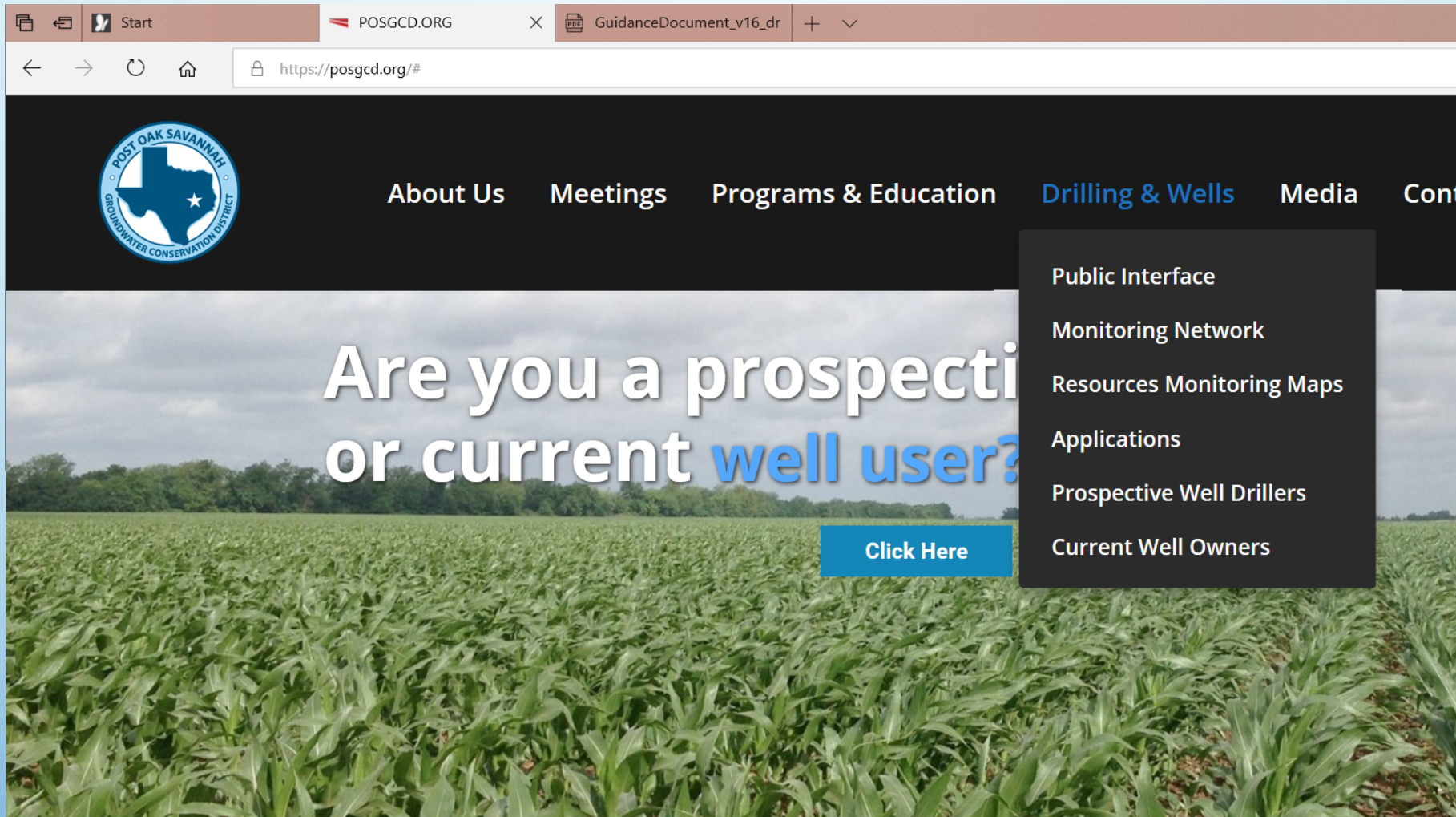
AND/OR

RALPH SIFUENTES RSIFUENTES@POSGCD.ORG

OR

CALL 512-455-9900

IMPROVING TRANSPARENCY



The screenshot shows a web browser window with the URL <https://posgcd.org/#>. The browser's address bar and tabs are visible at the top. The website's header features the logo of the Post Oak Savannah Groundwater Conservation District on the left, which includes a map of Texas with a star. To the right of the logo is a navigation menu with the following items: [About Us](#), [Meetings](#), [Programs & Education](#), [Drilling & Wells](#) (highlighted in blue), [Media](#), and [Contact](#). A dropdown menu is open under the 'Drilling & Wells' link, displaying a list of options: [Public Interface](#), [Monitoring Network](#), [Resources Monitoring Maps](#), [Applications](#), [Prospective Well Drillers](#), and [Current Well Owners](#). The main content area of the website features a large banner image of a green cornfield under a cloudy sky. Overlaid on this banner is the text 'Are you a prospective or current **well user?**' in white and blue. A blue button with the text 'Click Here' is positioned at the bottom right of the banner.

Start POSGCD.ORG GuidanceDocument_v16_dr

[About Us](#) [Meetings](#) [Programs & Education](#) [Drilling & Wells](#) [Media](#) [Contact](#)

Are you a prospective or current **well user?**

[Click Here](#)

- [Public Interface](#)
- [Monitoring Network](#)
- [Resources Monitoring Maps](#)
- [Applications](#)
- [Prospective Well Drillers](#)
- [Current Well Owners](#)