

# District Monitoring Program: 2017 Overview

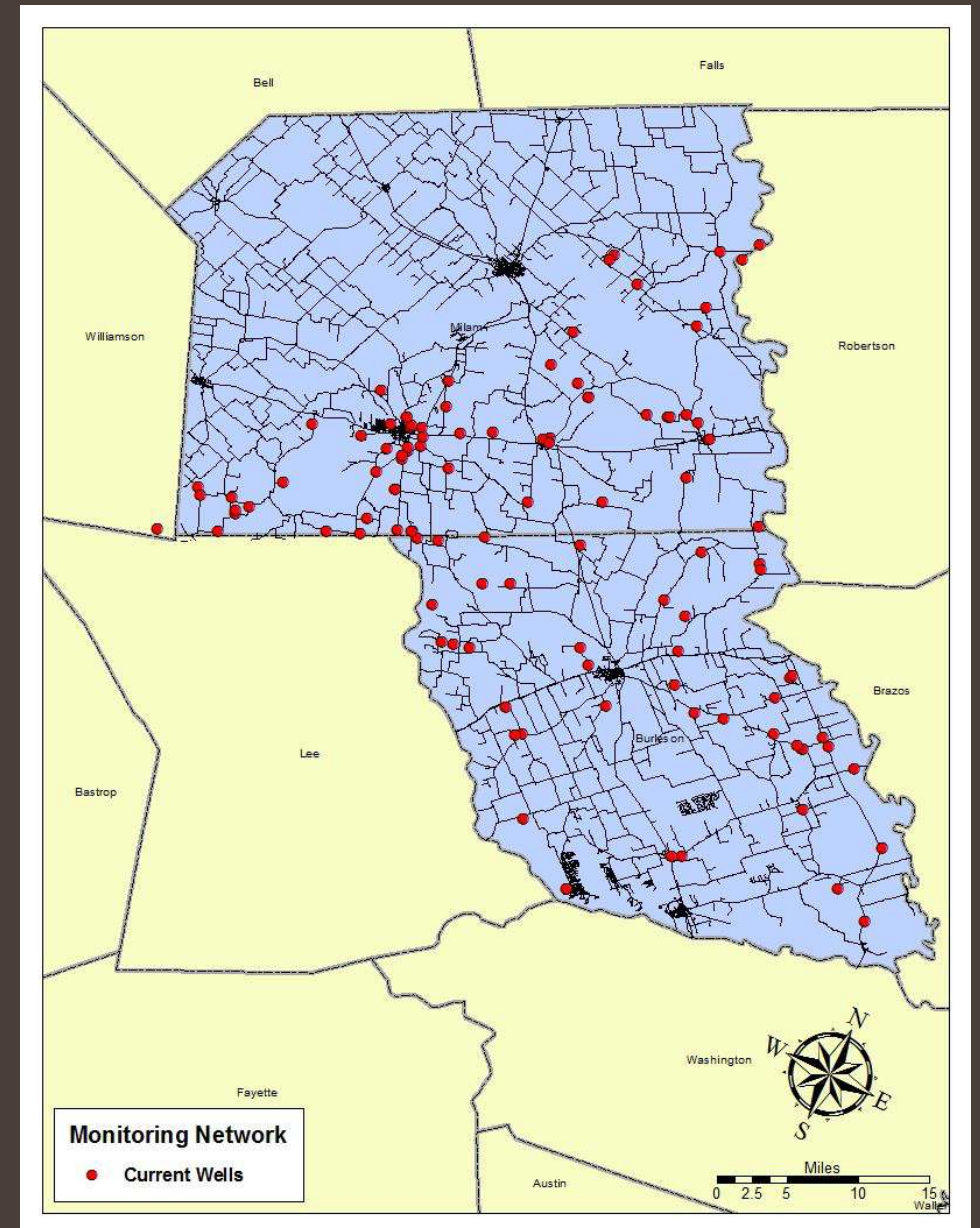
Presented by: Bobby Bazan, Water Resource Specialist

POSGCD Board Meeting

December 5, 2017

# Annual Water Level Measurements

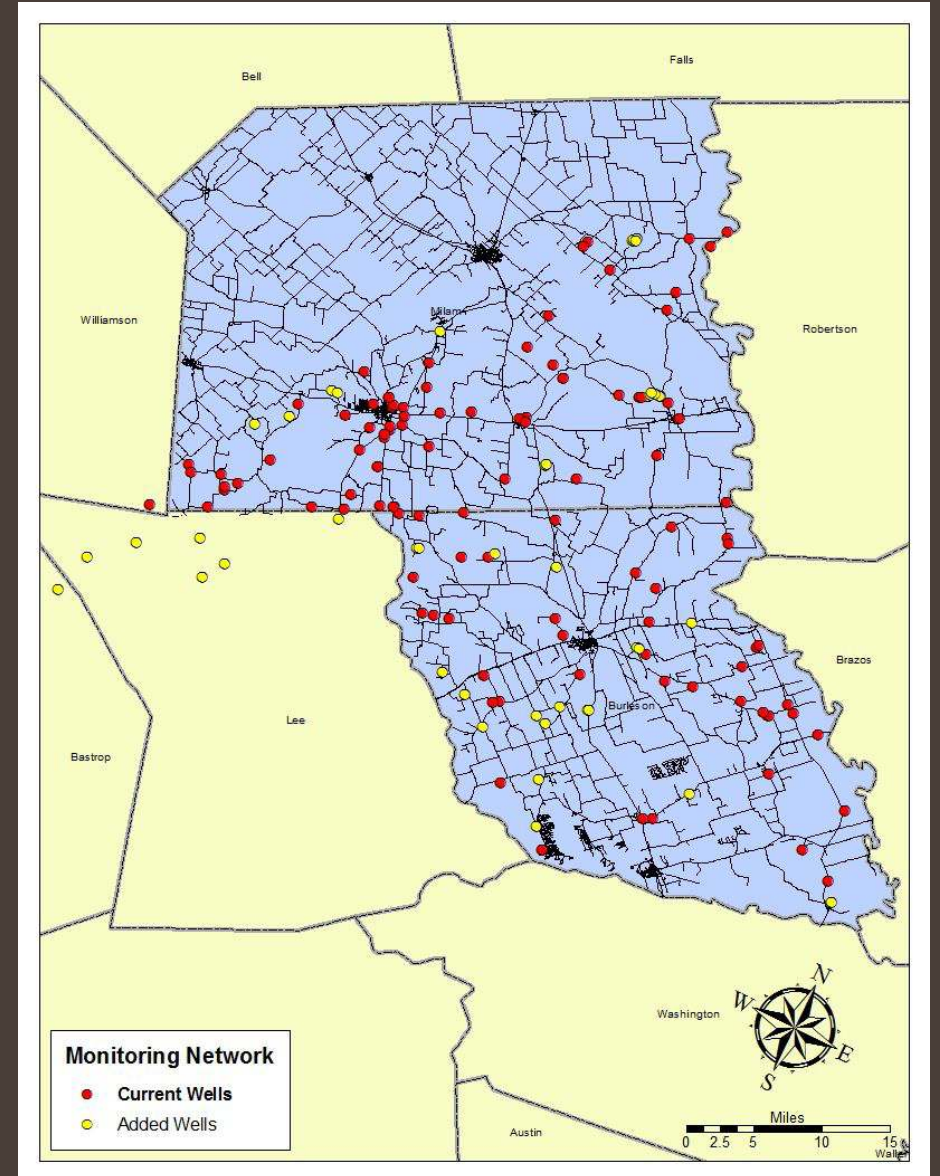
- 112 wells visited Feb-Apr
- 16 wells continuously measured
- All formations included (except Trinity)





# Program Improvements

- Hired additional staff
- 50 + Additional wells
- Locate and/or drill shallow Carrizo-Wilcox wells
- Increase the frequency of measurements
- Improve public access to data
- Improving data quality



# Program Improvements

- Daily remote download of data
- Data available on user-friendly interface
- Reduce number of site visits
- Reduce downtime for maintenance

The screenshot displays the HydroVu monitoring interface. At the top, it shows the date and time: Nov 12, 2017 12:00 AM. Below this, there are filters for 'Show Last 7 Days', 'Show Last 30 Days', and 'Show Last 365 Days'. The main area contains four data graphs:

- Pressure (psi):** A line graph showing pressure fluctuations between approximately 73.90 and 74.20 psi over the period from Nov 12 to Dec 4.
- Temperature (F):** A line graph showing temperature fluctuations between approximately 74.42 and 74.50 F over the same period.
- Baro (psi):** A line graph showing barometric pressure fluctuations between approximately 14.30 and 14.70 psi.
- Level: Depth to Water (ft):** A line graph showing the depth to water level, fluctuating between approximately 264.40 and 265.20 ft.

At the bottom right, there is a sidebar with filters for 'Projects', 'Labels', and 'Locations'. The 'Locations' filter is expanded, showing a table with the following entries:

Location	Color
<input type="checkbox"/> Ausley	Blue
<input checked="" type="checkbox"/> POSGCD_Troll	Yellow
<input checked="" type="checkbox"/> POSGCD_Tube	Red

At the bottom center, there is an 'Export CSV' button.



Post Oak Savannah Groundwater Conservation District

November 9 at 3:00pm

We installed the first transducer for the new telemetry system! Learn how the system will improve our monitoring network.



## Post Oak Savannah Groundwater – Telemetry Offers Monitoring Advantages

The new telemetry system is in the first stages of being installed and tested. The first transducer has been installed and will soon be collecting and transmitting data....

POSGCD.ORG

Like Comment Share

Google Map data ©2017 Google, INEGI Terms of Use

Projects Clear Filter

All Projects

Labels Clear Filter

All Labels

Locations

Location


Ausley

POSGCD\_Troll


POSGCD\_Tube

Export CSV

# Water Quality Testing

 **Post Oak Savannah Groundwater Conservation District** June 20 · 🌐

Don't miss out on getting your well water screened for just \$10 this week. Stop by the Burleson County - Texas A&M Agrilife Extension office or the Milam County Agriculture - Texas A&M AgriLife Extension office to pick up your sample package.



**Water Well Sample Campaign**  
June 19 — 20

**TEXAS WELL OWNER NETWORK**  
RESOURCES HELP LANDOWNERS PROTECT GROUNDWATER

Water well screening campaign set for June in Burleson, Milam counties - AgriLife Today

Writer: Paul Schattenberg, [210-859-5752](tel:210-859-5752), [paschattenberg@ag.tamu.edu](mailto:paschattenberg@ag.tamu.edu) Contact: Drew Gholson, [979-845-1461](tel:979-845-1461), [dgholson@tamu.edu](mailto:dgholson@tamu.edu) John Grange, [979-567-2308](tel:979-567-2308),...

[TODAY.AGRILIFE.ORG](http://TODAY.AGRILIFE.ORG)

👍 Like    💬 Comment    ➦ Share

- 57 participating wells
- Tested for Bacteriological, Metals, Cations, pH, Hardness, TDS.
- Planning for next year (June/July timeframe)