

POSGD Status Report: GMA 12 Joint Planning Process

GMA 12 Meeting
Milano Civic Center
120 West Ave. E
Milano, Texas
June 27, 2014

Evaluation of Desired Future Conditions: Process

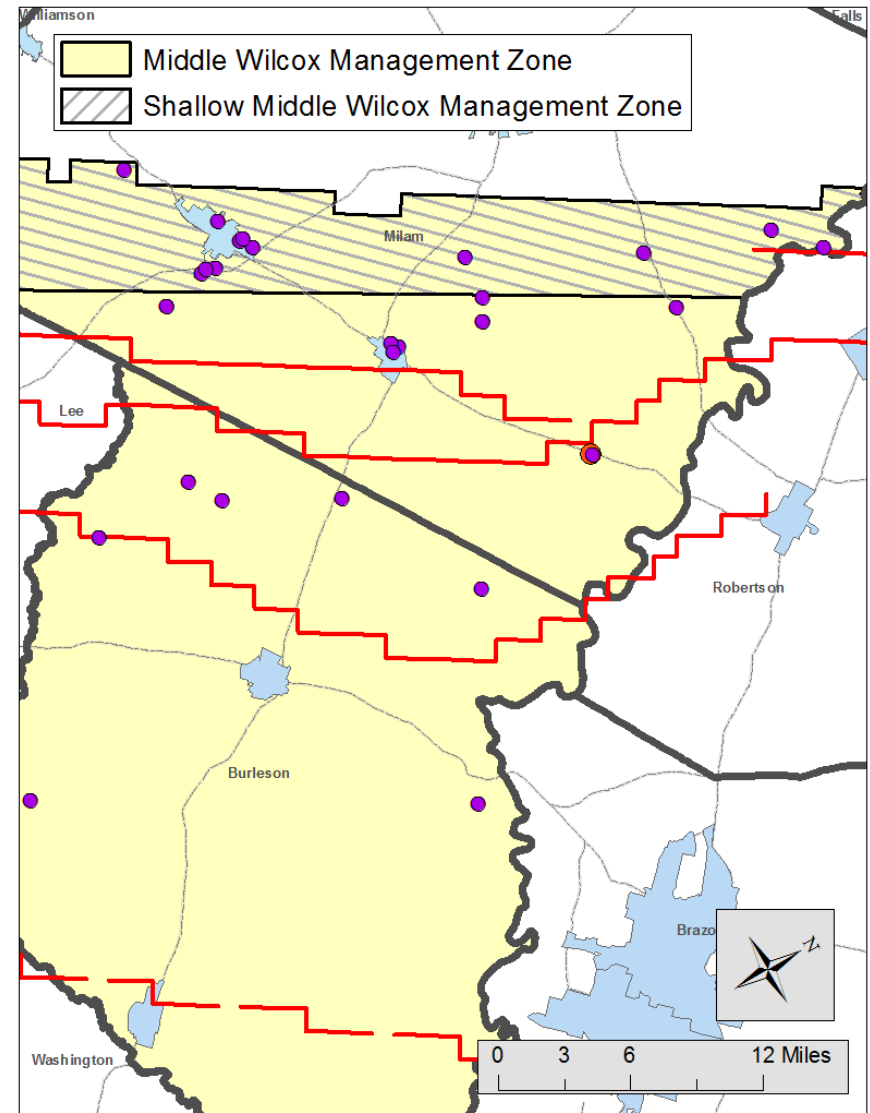
- Similar Process as 2010 Session
 - Vet DFC issues through a subcommittee of four Board members and GM
 - Subcommittee reports to POSGCD Board
 - Stakeholder meeting prior to GMA 12 adopting DFCs
- Anticipated Schedule from Now
 - 3 to 4 months to work with other districts to develop draft DFCs
 - 4-6 months to hold stakeholder meetings and adopt DFCs
 - 5-7 months to comment on other district DFCs and adjust POSGCD accordingly
 - 7-10 months for GMA 12 to adopt DFCs and prepare draft explanatory report

Evaluation of Desired Future Conditions: Considerations

- Nine Criteria identified in §36.108 and discussed in explanatory report
- Key Management Plan and Rule Issues
 - Protection of existing wells (water column height)
 - Thresholds for “shallow” management zones
- Exploratory GMA 12 GAM Runs
- Other Items Contained in Info Package Distributed Last GMA 12 Meeting
 - Permitted pumping
 - Existing Pumping
 - State Water Plan Demands and Strategies

Evaluation of Desired Future Conditions: Shallow Management Zones

Shallow Management Zone	Average Drawdown (ft) that Occurs between January 2000 and December 2059 in the Shallow Management Zone
Sparta	10
Queen City	10
Carrizo	20
Upper Wilcox (Calvert Bluff Fm)	20
Middle Wilcox (Simsboro Fm)	20
Lower Wilcox (Hooper Fm)	20
Yegua-Jackson	15



Evaluation of Desired Future Conditions: Uniting Shallow and Deep Thresholds into a DFC

Conditions			Desired Future Conditions - Drawdown
			Aquifer
DD in Unconfined Area	% Decline in artesian pressure	Max DD in Confined Area	Simsboro
10	0.25	450	312
15	0.25	450	313
20	0.25	450	313
25	0.25	450	314
20	0.25	350	260
20	0.25	400	288
20	0.25	450	313
20	0.25	500	336
20	0.25	550	357
20	0.33	350	273
20	0.33	400	305
20	0.33	450	335
20	0.33	500	364
20	0.33	550	390

From POSGCD DFC committee presentation Feb. 2009

Quantifying and Expressing a Drawdown-based DFC

- Concerns with Average Drawdown Criteria - 300 ft Simsboro Example
 - does not adequately convey protection to wells in Simsboro shallow management zone
 - does not adequately convey the protection to shallow wells above the Simsboro deep management zone
 - does not adequately convey possible large-scale development of brackish resource in far down-dip Simsboro
- Possible Options
 - Combine average drawdown with other criteria
 - Express drawdown in terms of water levels from monitoring wells